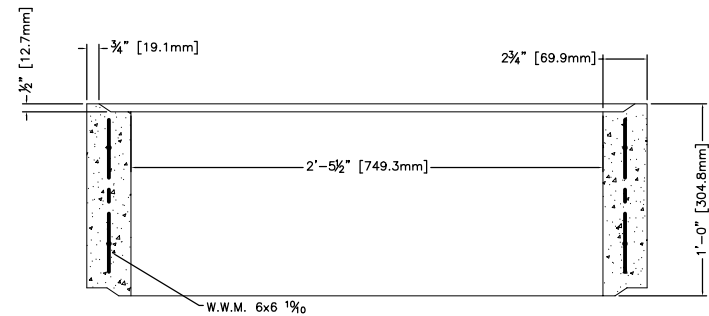



NOTES

- COMPRESSIVE STRENGTH OF THE CONCRETE SHALL BE 35.0 MPA



 152 Brandt Street, Steinbach, MB R5G 0R2 T (204) 326 3445 or 1 800 461 2278 F (204) 326 5915 barkmanconcrete.com	CUSTOMER		PART NUMBER			
	barkman STD PRODUCT		110971			
PROJECT		INITIALS		MM/DD/YYYY		
12" MANHOLE		DRAWN BY		DATE		
TITLE		CHECKED BY		DATE		
PRODUCT DETAILS		WEIGHT (lbs)		SCALE		
THE INFORMATION CONTAINED IN THIS DRAWING IS THE SOLE PROPERTY OF BARKMAN CONCRETE LTD. ANY REPRODUCTION IN PART OR AS A WHOLE WITHOUT THE WRITTEN PERMISSION OF BARKMAN CONCRETE LTD. IS PROHIBITED.		258		N.T.S.		
		PAPER SIZE		SHT NO.		
		8 1/2 X 11 (A)		1		
				REV. #		
				0		