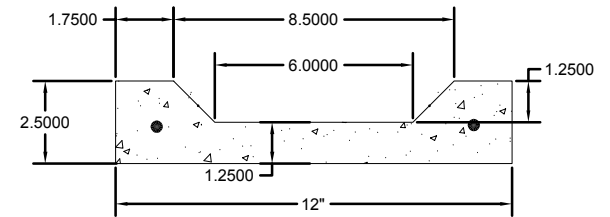



TOP VIEW

24" SPLASH PAD

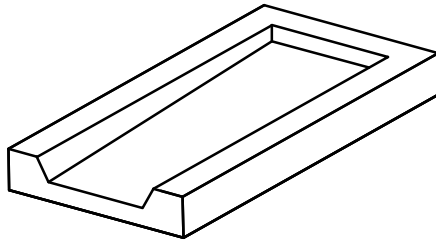


SECTION A-A

 152 Brandt Street, Steinbach, MB R5G 0R2 T (204) 326 3445 or 1 800 461 2278 F (204) 326 5915 barkmanconcrete.com	CUSTOMER		PART NUMBER			
	barkman STD PRODUCT		-			
	PROJECT		INITIALS		MM/DD/YYYY	
	NATURAL SPLASH PAD (24"x12"x2.5")		DP		05/30/2013	
TITLE		CHECKED BY		DATE		
PRODUCT DETAILS						
<small>THE INFORMATION CONTAINED IN THIS DRAWING IS THE SOLE PROPERTY OF BARKMAN CONCRETE LTD. ANY REPRODUCTION IN PART OR AS A WHOLE WITHOUT THE WRITTEN PERMISSION OF BARKMAN CONCRETE LTD. IS PROHIBITED.</small>		WEIGHT (lbs)	SCALE	PAPER SIZE	SHT NO.	REV. #
			N.T.S.	8 1/2 X 11 (A)	1	0

barkman™

24" SPLASH PAD



Product Code: 105603

Size: 24" W x 12" L x 2½" H

Weight: 47 lb.

Packaging: Palletized (15 per pallet) or sold separately

Maintenance: Occasionally wash with mild detergent and water

Material:

1) Concrete

- minimum 3500 psi compressive strength concrete

- thickness: 2½"