

Durahold Wall

barkman™

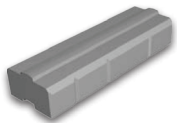


Grand Walls

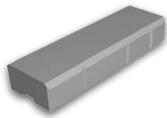
The Solid Choice

Low installation cost and long maintenance-free life are typical reasons to choose Durahold for industrial and commercial landscaping, erosion control, protective facing and waterfront treatments. Durahold is a massive system and is ideal for very demanding applications.

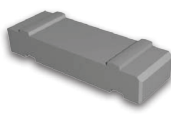
Sizes (L x W x H)



Standard
305 x 1829 x 610 mm
12 x 72 x 24 in



Coping
305 x 1829 x 610 mm
12 x 72 x 24 in



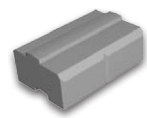
Tie Back
305 x 1829 x 610 mm
12 x 72 x 24 in



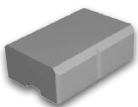
90° Corner
305 x 1524 x 610 mm
12 x 60 x 24 in



45° Corner
305 x 1524 x 610 mm
12 x 60 x 24 in



1/2 Standard
305 x 914 x 610 mm
12 x 36 x 24 in



1/2 Coping
305 x 914 x 610 mm
12 x 36 x 24 in

Colours



Natural

Bundle Configurations

Half pieces and corner blocks available. Coping is the same as a standard unit but has flat top. Durahold is machine placed.

DESCRIPTION	UNIT					PALLET ROW			PALLET				
	Size (L x W xH)		Face Area		Weight	No. of Units	Face Area		No. of Units	No. of Rows	Face Area		Weight
	mm	in	m ²	sq ft	lb		m ²	sq ft			m ²	sq ft	lb
Standard	305 x 1829 x 610	12 x 72 x 24	.56	6.00	1740	-	-	-	2	-	-	-	-
Coping	305 x 1829 x 610	12 x 72 x 24	.56	6.00	1710	-	-	-	2	-	-	-	-
Tie Back	305 x 1829 x 610	12 x 72 x 24	-	-	1529	-	-	-	2	-	-	-	-
90 Degree Corner	305 x 1524 x 610	12 x 60 x 24	-	-	1418	-	-	-	2	-	-	-	-
45 Degree Corner	305 x 1524 x 610	12 x 60 x 24	-	-	1305	-	-	-	2	-	-	-	-
1/2 Standard	305 x 914 x 610	12 x 36 x 24	.28	3.00	870	-	-	-	4	-	-	-	-
1/2 Coping	305 x 914 x 610	12 x 36 x 24	.28	3.00	870	-	-	-	4	-	-	-	-

Steinbach Office

152 Brandt Street
Steinbach, MB R5G 0R2
T (800)-461-2278
F (204)-326-5915

Winnipeg Office

909 Gateway Road
Winnipeg, MB R2K 3L1
T (800)-342-2879
F (204)-663-4854

Vancouver Office

2104-290 Newport Drive
Port Moody, BC V3H 5N2
T (778)-689-7670
F (604)-949-0321

Calgary Office

813 McCool St. Box 1136
Crossfield, AB T0M 0S0
T (403)-946-4630
F (403)-946-4631

