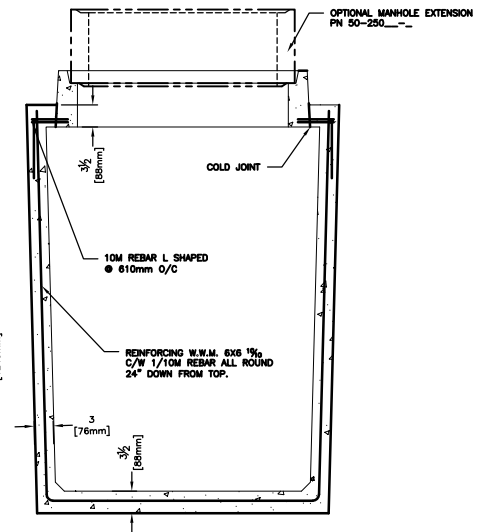
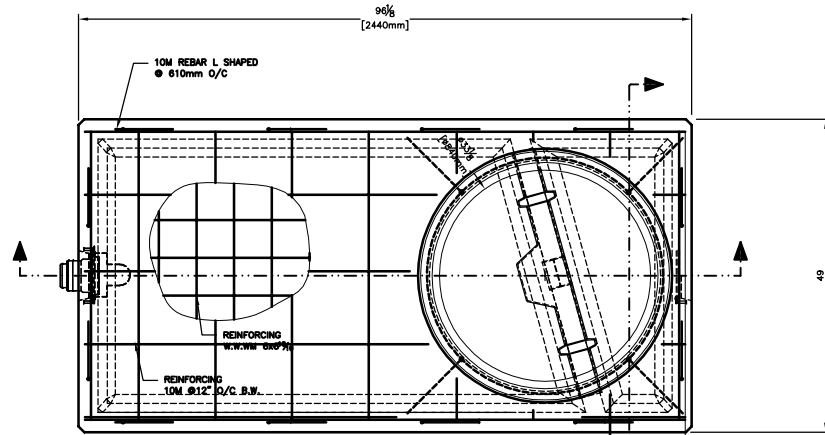
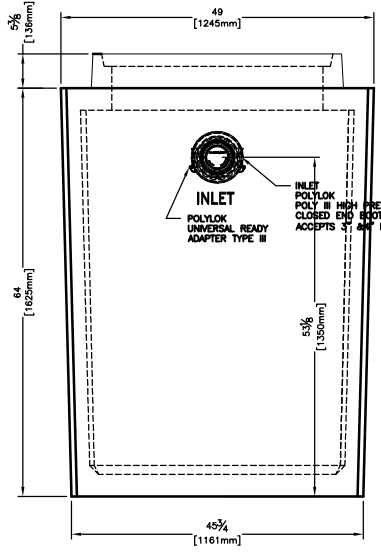


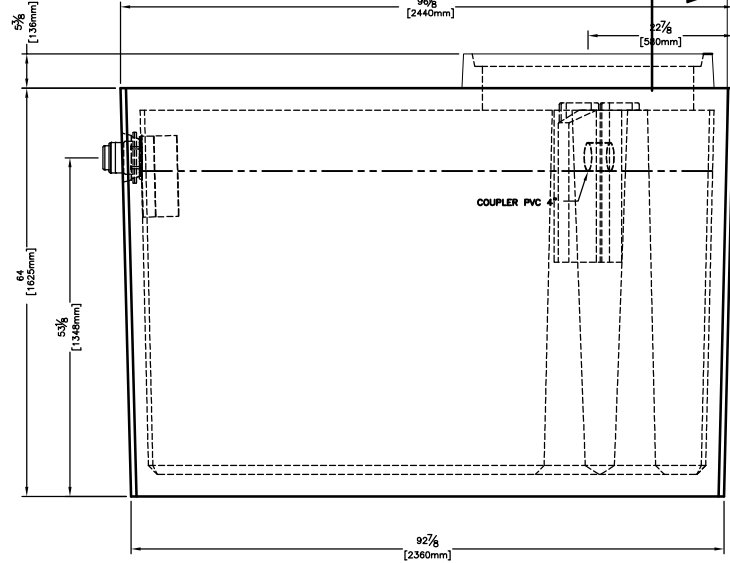
10M REBAR L SHAPED  
● 610mm O/C



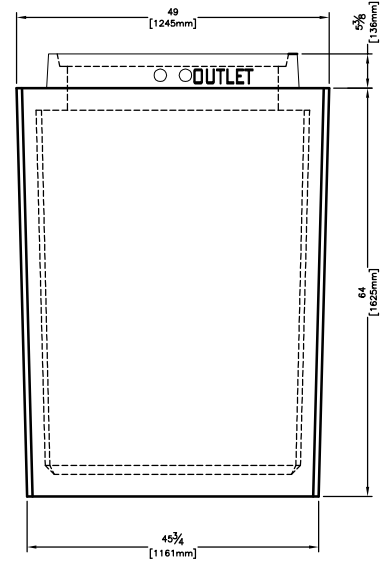
OPTIONAL MANHOLE EXTENSION  
PN 50-250



INLET  
POLYLOK  
UNIVERSAL READY  
ADAPTER TYPE III



COUPLER PVC



- NOTES:**
- SEPTIC TANK MODEL # P-750
  - THIS TANK CONFORMS TO CAN/CSA -886-M10.
  - COMPRESSIVE STRENGTH OF THE CONCRETE SHALL BE 32.0 MPA
  - INLET DEVICE SHALL NOT EXTEND MORE THAN 125MM INTO LIQUID LEVEL.
  - BURIAL DEPTH =2.13 METERS
  - WORKING RETENTION CHAMBER CAPACITY =2370 L (628 GAL)
  - WORKING PUMP OUT CHAMBER CAPACITY =455 L (120 GAL)
  - TOTAL WORKING CHAMBER CAPACITY =2825 L (748 GAL)

- GENERAL NOTE:-**
- CHAMFER 30MM @ 45° UNLESS OTHERWISE SPECIFIED TOLERANCES ±2.5MM
  - IF THE TANK IS SET ON UNEVEN SURFACE, THE BOTTOM OF THE EXCAVATION NEEDS TO BE LEVELED WITH AGGREGATE IN ORDER TO SUPPORT THE TANK EVENLY.
  - IF THE TANK HAS AT LEAST 12\"/>

**barkman™**

152 Brandt Street, Steinbach, MB R5G 0R2  
T (204) 326 3445 or 1 800 461 2278 F (204) 326 5915  
barkmanconcrete.com

THE INFORMATION CONTAINED IN THIS DRAWING IS THE SOLE PROPERTY OF BARKMAN CONCRETE LTD. ANY REPRODUCTION IN PART OR AS A WHOLE WITHOUT THE WRITTEN PERMISSION OF BARKMAN CONCRETE LTD. IS PROHIBITED.

CUSTOMER	<b>barkman STD PRODUCT</b>
PROJECT	<b>750 GALLON SEPTIC PUMP TANK</b>
TITLE	<b>PRODUCT DETAILS</b>

PART NUMBER		<b>110895</b>		
	INITIALS		MM/DD/YYYY	
DRAWN BY	DST	DATE	06/11/2013	
CHECKED BY		DATE		
WEIGHT (lbs)	SCALE	PAPER SIZE	SHT NO.	REV. #
7,600	N.T.S.	8 1/2 X 11 (A)	<b>1</b>	<b>0</b>