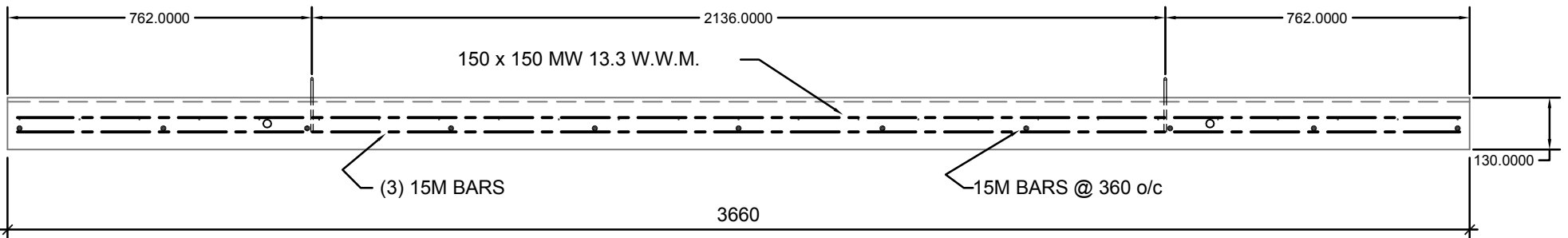
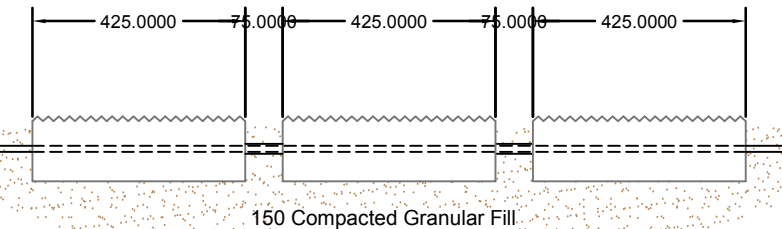


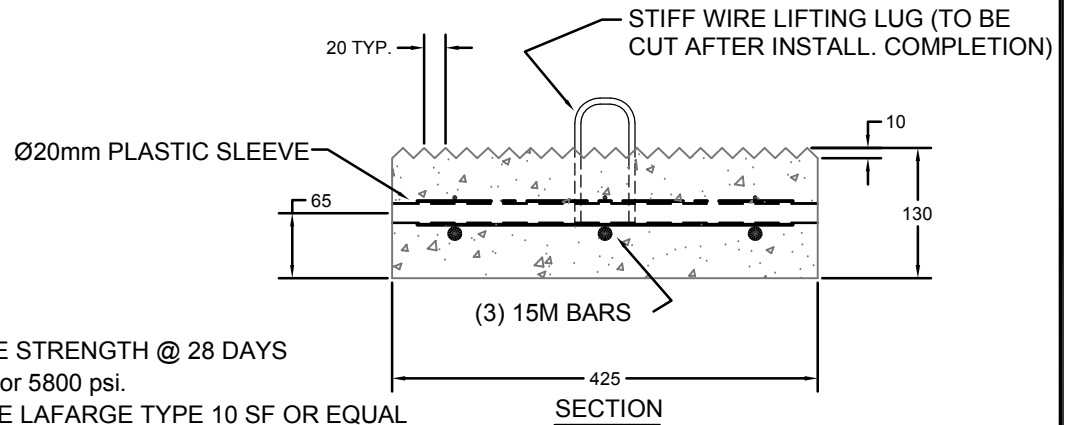
TOP VIEW




SIDE VIEW



ASSEMBLY



- NOTES
- COMPRESSIVE STRENGTH @ 28 DAYS TO BE 40 MPa or 5800 psi.
  - CEMENT TO BE LAFARGE TYPE 10 SF OR EQUAL
  - WEIGHT OF SINGLE PAD = 451 Kg or 995 lbs.

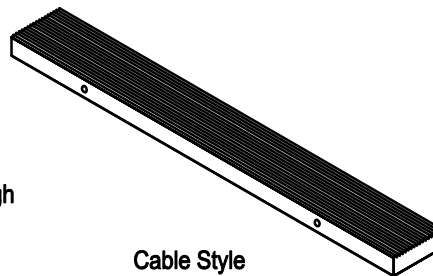
 152 Brandt Street, Steinbach, MB R5G 0R2 T (204) 326 3445 or 1 800 461 2278 F (204) 326 5915 barkmanconcrete.com	CUSTOMER		PART NUMBER				
	barkman STD PRODUCT		-				
PROJECT		BOAT RAMP - 12'		DRAWN BY		INITIALS	MM/DD/YYYY
TITLE		PRODUCT DETAILS		CHECKED BY		DATE	05/30/2013
				WEIGHT (lbs)	SCALE	PAPER SIZE	SHT NO.
THE INFORMATION CONTAINED IN THIS DRAWING IS THE SOLE PROPERTY OF BARKMAN CONCRETE LTD. ANY REPRODUCTION IN PART OR AS A WHOLE WITHOUT THE WRITTEN PERMISSION OF BARKMAN CONCRETE LTD. IS PROHIBITED.				N.T.S.	8 1/2 X 11 (A)	1	0



# 12' BOAT RAMP

Product Code: 105673  
Size: 144" x 17" W x 5" H  
Weight: 995 lbs.  
Packaging: 2 rows stacked 4 high  
Material:

- 1) Concrete
  - 1 boat ramp pad
- 2) Lifting Lug
  - 2 stiff wire lifting lug  
(cast into concrete  
cut off after installation)



## CONCRETE

Size: 144" L x 17" W x 5" H  
Weight: 1011 lbs.  
Colors: Natural Gray  
Material:

- 1) Concrete:
  - minimum 5800 psi compressive strength concrete
- 2) Reinforcing
  - 15 mm Rebar

## INSTALLATION NOTES

- Pads are to be placed evenly leaving an approximate spacing of 3" between each section
- Slide cable through holes provided as well as through  $\text{Ø}\frac{3}{4}$ " x 3" long pipe sleeve (not supplied)
- Anchor cable as required
- Cut stiff wire lifting lug to top of concrete

### Important Note:

To accommodate sloping grades (2)  $\text{Ø}\frac{3}{4}$ " plastic pipe sleeve (not supplied) will be required to be placed between each boat ramp pad. This sleeve will provide flexibility as well as protection to the cable (also not supplied)