

# Bridgewood Slabs



## The Authentic Look of Wood in a Concrete Slab

Bridgewood slab has all the beauty of wood with the durability of concrete. It features a realistic wood texture created from actual wood planks. Unlike traditional wood surfaces, Bridgewood will never rot, warp, splinter or fade. It'll never need to be stained or sealed like wood, or crack like stamped concrete. Feel the warm and inviting nature of wood in your landscape projects with Bridgewood.

### SIZES (L X W X H)



890 x 250 x 51 mm  
35.04 x 9.84 x 2 in

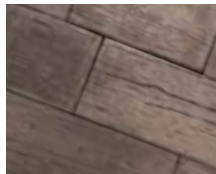


595 x 250 x 51 mm  
23.43 x 9.84 x 2 in

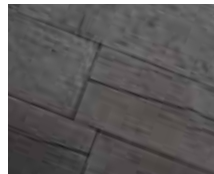


440 x 250 x 51 mm  
17.32 x 9.84 x 2 in

### COLOURS



Cedar Brown



Weathered Grey



Pools



Paths

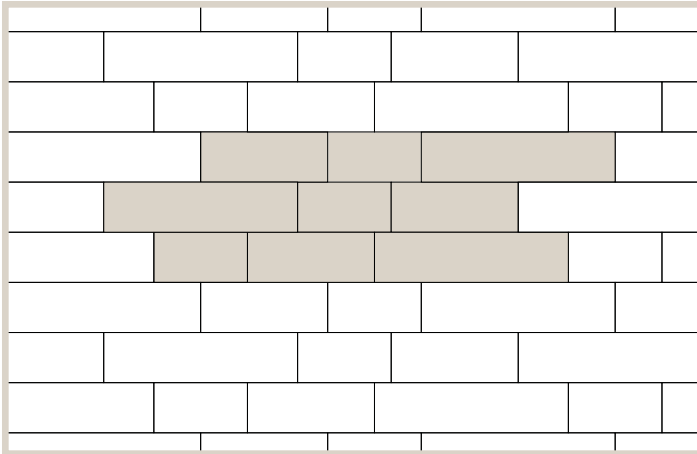


Grand Patios



Patios

## PATTERNS



Pattern 1

## INSTALLATION NOTES

Plank thickness varies to replicate real wood planks. To achieve the most desirable look, Bridgewood should be installed using a combination of all 3 sizes with laying ratio of 1:1:1.

For more in depth installation guides for specific products, visit [BarkmanConcrete.com](http://BarkmanConcrete.com).

## BUNDLE CONFIGURATIONS

DESCRIPTION	UNIT					PALLET				
	SIZE (L X W X H)		FACE AREA		WEIGHT	NO. OF UNITS	NO. OF ROWS	FACE AREA		WEIGHT
	MM	IN	M <sup>2</sup>	SQ FT	LB			M <sup>2</sup>	SQ FT	LB
17 x 10	440 x 250 x 51	17.32 x 9.84 x 2	.11	1.18	28.5	40	-	4.39	47.2	1140
23 x 10	595 x 250 x 51	23.43 x 9.84 x 2	.15	1.6	38.5	20	-	2.97	32	770
35 x 10	890 x 250 x 51	35.04 x 9.84 x 2	.22	2.39	58	20	-	4.45	47.9	1160

### Steinbach Office

152 Brandt Street  
Steinbach, MB R5G 0R2  
T (800)-461-2278  
F (204)-326-5915

### Winnipeg Office

901 Gateway Road  
Winnipeg, MB R2K 3L1  
T (800)-342-2879  
F (204)-663-4854

### Vancouver Office

2104-290 Newport Drive  
Port Moody, BC V3H 5N2  
T (778)-689-7670  
F (604)-949-0321

### Calgary Office

813 McCool St. Box 1136  
Crossfield, AB T0M 0S0  
T (403)-946-4630  
F (403)-946-4631

