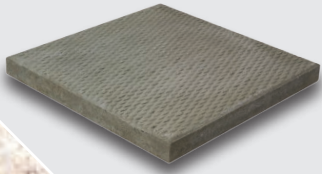


Diamondface Slab



barkman™



Paths

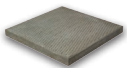


Patios

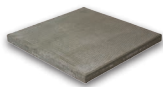
An Old Standard

Diamondface Slab is a great option for quickly laying down pathways or utility pads at a jobsite or in your own backyard.

Sizes (L x W x H)



457 x 457 x 38.1 mm
18 x 18 x 1.5 in

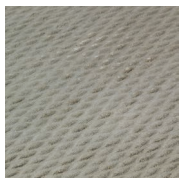


610 x 610 x 44 mm
24 x 24 x 1.75 in



610 x 762 x 44 mm
24 x 30 x 1.75 in

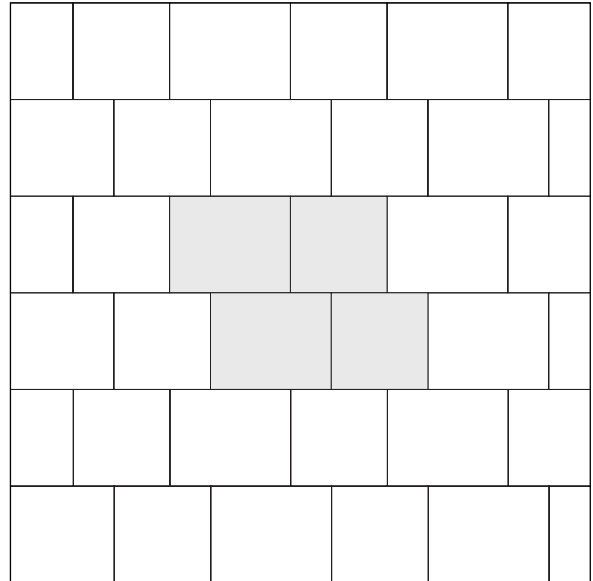
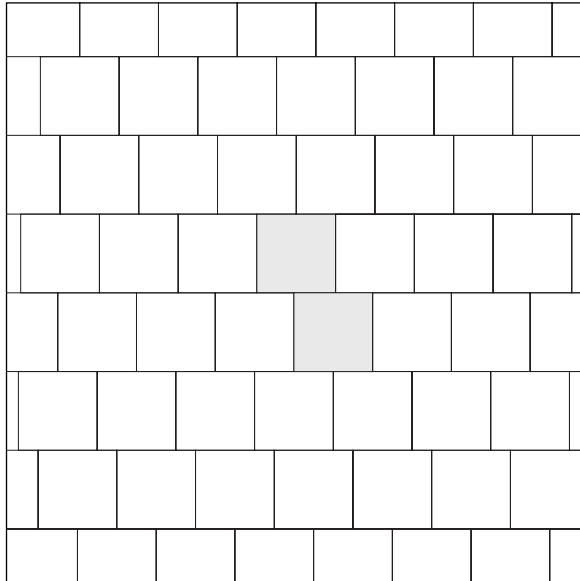
Colours



Natural

Patterns

Diamondface slab is available in a single 1.5 inch thick square option and two larger, 1.75 inch thick options. Slabs with differing thicknesses should not be used together.



Bundle Configurations

DESCRIPTION	UNIT					PALLET				
	Size (L x W x H)		Face Area		Weight	No. of Units	No. of Rows	Face Area		Weight
	mm	in	m ²	sq ft	lb			m ²	sq ft	lb
18 x 18	457 x 457 x 38.1	18 x 18 x 1.5	.21	2.25	41	25	-	5.23	56.25	1025
24 x 24	610 x 610 x 44	24 x 24 x 1.75	.37	4	90	25	-	9.29	100	2250
24 x 30	610 x 762 x 44	24 x 30 x 1.75	.46	5	115	25	-	11.61	125	2875

Steinbach Office

152 Brandt Street
Steinbach, MB R5G 0R2
T (800)-461-2278
F (204)-326-5915

Winnipeg Office

909 Gateway Road
Winnipeg, MB R2K 3L1
T (800)-342-2879
F (204)-663-4854

Vancouver Office

2104-290 Newport Drive
Port Moody, BC V3H 5N2
T (778)-689-7670
F (604)-949-0321

Calgary Office

813 McCool St. Box 1136
Crossfield, AB T0M 0S0
T (403)-946-4630
F (403)-946-4631

