

# Durahold Wall

barkman™

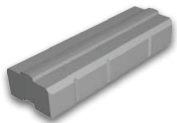


Grand Walls

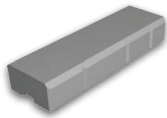
## The Solid Choice

Low installation cost and long maintenance-free life are typical reasons to choose Durahold for industrial and commercial landscaping, erosion control, protective facing and waterfront treatments. Durahold is a massive system and is ideal for very demanding applications.

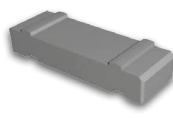
## Sizes (H x W x D)



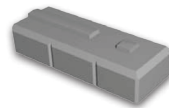
Standard  
305 x 1829 x 610 mm  
12 x 72 x 24 in



Coping  
305 x 1829 x 610 mm  
12 x 72 x 24 in



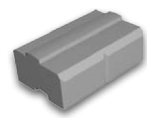
Tie Back  
305 x 1829 x 610 mm  
12 x 72 x 24 in



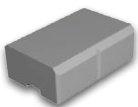
90° Corner  
305 x 1524 x 610 mm  
12 x 60 x 24 in



45° Corner  
305 x 1524 x 610 mm  
12 x 60 x 24 in



1/2 Standard  
305 x 914 x 610 mm  
12 x 36 x 24 in



1/2 Coping  
305 x 914 x 610 mm  
12 x 36 x 24 in

## Colours



Natural

# Bundle Configurations

Half pieces and corner blocks available. Coping is the same as a standard unit but has flat top. Durahold is machine placed.

DESCRIPTION	UNIT					PALLET ROW			PALLET				
	Size (H x W x D)		Face Area		Weight	No. of Units	Face Area		No. of Units	No. of Rows	Face Area		Weight
	mm	in	m <sup>2</sup>	sq ft	lb		m <sup>2</sup>	sq ft			m <sup>2</sup>	sq ft	lb
Standard	305 x 1829 x 610	12 x 72 x 24	.56	6.00	1740	-	-	-	2	-	-	-	-
Coping	305 x 1829 x 610	12 x 72 x 24	.56	6.00	1710	-	-	-	2	-	-	-	-
Tie Back	305 x 1829 x 610	12 x 72 x 24	-	-	1529	-	-	-	2	-	-	-	-
90 Degree Corner	305 x 1524 x 610	12 x 60 x 24	-	-	1418	-	-	-	2	-	-	-	-
45 Degree Corner	305 x 1524 x 610	12 x 60 x 24	-	-	1305	-	-	-	2	-	-	-	-
1/2 Standard	305 x 914 x 610	12 x 36 x 24	.28	3.00	870	-	-	-	4	-	-	-	-
1/2 Coping	305 x 914 x 610	12 x 36 x 24	.28	3.00	870	-	-	-	4	-	-	-	-

**Steinbach Office**

152 Brandt Street  
Steinbach, MB R5G 0R2  
T (800)-461-2278  
F (204)-326-5915

**Winnipeg Office**

909 Gateway Road  
Winnipeg, MB R2K 3L1  
T (800)-342-2879  
F (204)-663-4854

**Vancouver Office**

2104-290 Newport Drive  
Port Moody, BC V3H 5N2  
T (778)-689-7670  
F (604)-949-0321

**Calgary Office**

813 McCool St. Box 1136  
Crossfield, AB T0M 0S0  
T (403)-946-4630  
F (403)-946-4631

