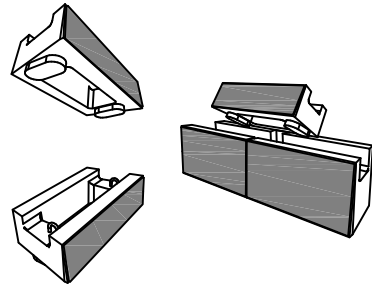


Dimensions

Face Width	48"	1219mm
Back Width	39"	991mm
Depth	24"	610mm
Height	24"	610mm
Face Area	8 sq ft	0.74 sq m
Setback	4.5deg	2.0"/Unit
Weight	1370lbs	621kg*

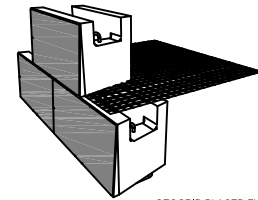
STANDARD UNIT



Dimensions

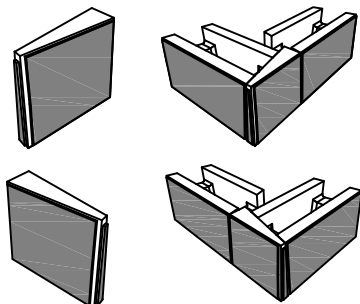
Face Width	48"	1219mm
Back Width	39"	991mm
Depth	24"	610mm
Height	12"	305mm
Face Area	4 sq ft	0.37sq m
Setback	4.5deg	1.0"/Unit
Weight	750lbs	340kg*

HALF HIGH UNIT



GEOGRID PLACED FLAT AND TIGHT FOR MAXIMUM SECURE LUG CONNECTION

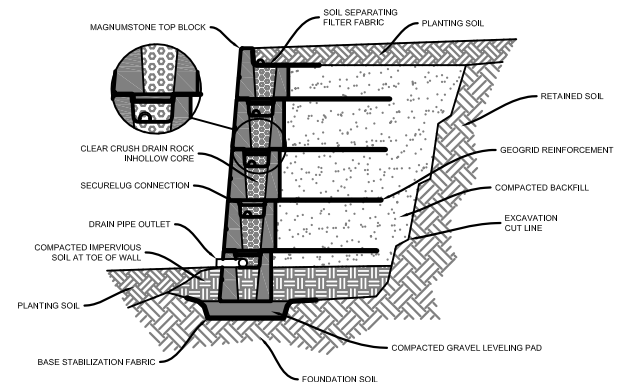
General Notes



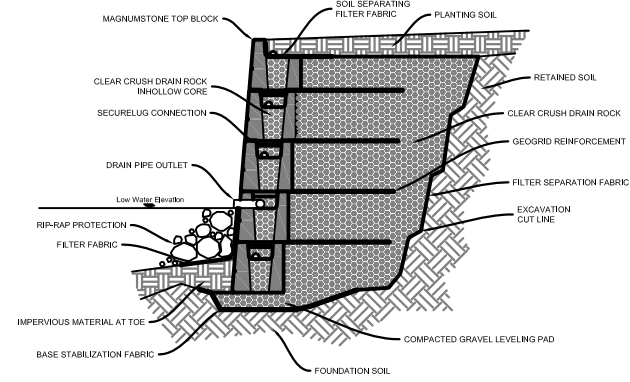
Dimensions

Face Width	26"	660mm
Back Width	26"	660mm
Depth	3/8.5"	76/215mm
Height	24"	610mm
Face Area	4.3sq ft	0.4 sq m
Setback	4.5deg	2"/Unit
Weight	314lbs	142kg*

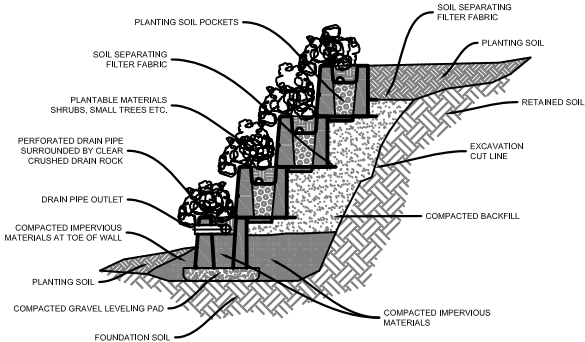
CORNER/END UNIT



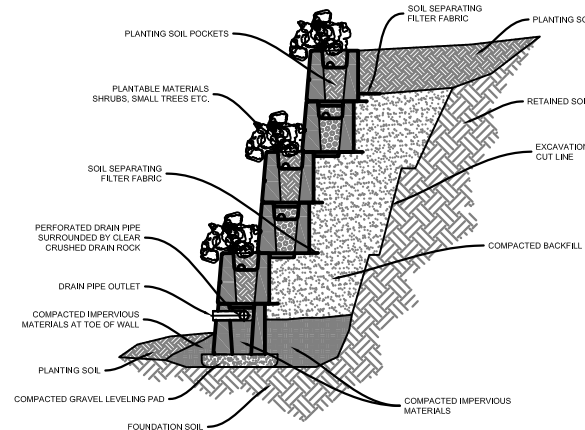
GEOGRID REINFORCED WALL



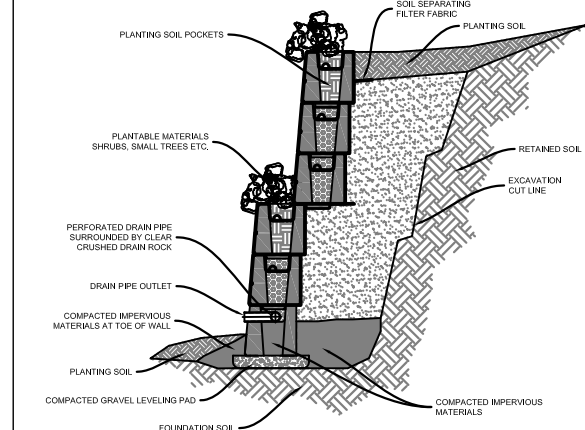
WATER APPLICATION



2.0 FT PLANTABLE WALL



4.0 FT PLANTABLE WALL



6.0 FT PLANTABLE WALL

No.	Revision/Issue	Date

MagnumStone
by CORNERSTONE®

Project Name and Address

Project _____ Sheet _____
Date _____
Scale _____

FN/DATE

REV/DATE

USER