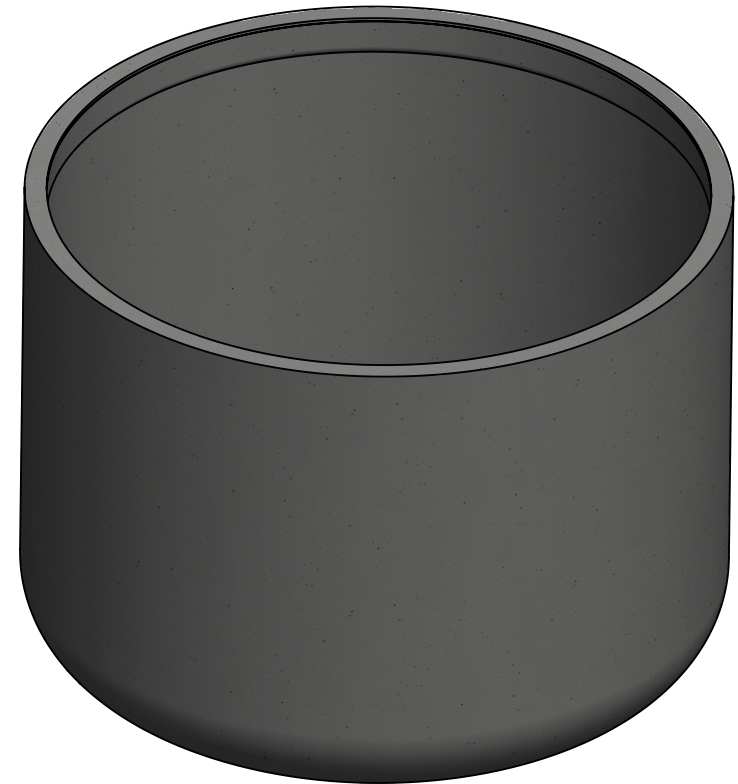


AVAILABLE OPTIONS IN DIFFERENT COLOR AND FINISH

1. NEWPORT RND 436 WITHOUT DRAIN HOLE
2. NEWPORT RND 436 WITH DRAIN HOLE
3. NEWPORT RND 436 WITH SELF-WATERING UNIT AND WITHOUT DRAIN HOLE
4. NEWPORT RND 436 WITH SELF-WATERING UNIT AND DRAIN HOLE



				<p>THE INFORMATION CONTAINED IN THIS DRAWING IS THE SOLE PROPERTY OF BARKMAN CONCRETE LTD. ANY REPRODUCTION IN PART OR AS A WHOLE WITHOUT THE WRITTEN PERMISSION OF BARKMAN CONCRETE LTD. IS PROHIBITED.</p> <p>barkman™</p> <p>152 Brandt Street, Steinbach, MB R5G 0R2 T (204) 326 3445 or 1 800 461 2278 F (204) 326 5915 barkmanconcrete.com</p>	DESCRIPTION NEWPORT ROUND PL - 48"x 36"			PART NUMBER -							
00	12/4/2018	ISSUED FOR CUSTOMER'S REFERENCE			RD		INITIALS		MM/DD/YYYY	WEIGHT (lbs)	FINISH	PAPER SIZE	SHT NO.	REV. #	
REV	DATE	DESCRIPTION			BY		DRAWN BY	RD	DATE	12/4/2018	403.00	PAINT	11 x 17 (B)	1	00
					CHECKED BY		DATE								

**NEWPORT PLANTER RND 436
WITHOUT DRAIN HOLE OPTION**

PART NUMBER	COLOR
127047	FLAGSTONE SMOOTH
127049	LIME SMOOTH
127051	EBONY SMOOTH
127053	NATURAL SMOOTH
127037	CORDOBA SMOOTH
127039	OLIVE SMOOTH
127041	TOLEDO SMOOTH
127043	DARK BROWN SMOOTH
127045	CARMINE SMOOTH
127048	FLAGSTONE TEXTURED
127050	LIME TEXTURED
127052	EBONY TEXTURED
127054	NATURAL TEXTURED
127038	CORDOBA TEXTURED
127040	OLIVE TEXTURED
127042	TOLEDO TEXTURED
127044	DARK BROWN TEXTURED
127046	CARMINE TEXTURED
135766	BRIGHT WHITE SMOOTH
135767	BRIGHT WHITE TEXTURED

**NEWPORT PLANTER RND 436
WITH DRAIN HOLE OPTION**

PART NUMBER	COLOR
127281	FLAGSTONE SMOOTH
127283	LIME SMOOTH
128285	EBONY SMOOTH
128287	NATURAL SMOOTH
127271	CORDOBA SMOOTH
127273	OLIVE SMOOTH
127275	TOLEDO SMOOTH
127277	DARK BROWN SMOOTH
127279	CARMINE SMOOTH
127282	FLAGSTONE TEXTURED
127284	LIME TEXTURED
127286	EBONY TEXTURED
127288	NATURAL TEXTURED
127272	CORDOBA TEXTURED
127274	OLIVE TEXTURED
127276	TOLEDO TEXTURED
127278	DARK BROWN TEXTURED
127280	CARMINE TEXTURED
135792	BRIGHT WHITE SMOOTH
135793	BRIGHT WHITE TEXTURED

**NEWPORT PLANTER RND 436
WITH SELF-WATERING UNIT**

PART NUMBER	COLOR
127515	FLAGSTONE SMOOTH
127517	LIME SMOOTH
127519	EBONY SMOOTH
127521	NATURAL SMOOTH
127505	CORDOBA SMOOTH
127507	OLIVE SMOOTH
127509	TOLEDO SMOOTH
127511	DARK BROWN SMOOTH
127513	CARMINE SMOOTH
127516	FLAGSTONE TEXTURED
127518	LIME TEXTURED
127520	EBONY TEXTURED
127522	NATURAL TEXTURED
127506	CORDOBA TEXTURED
127508	OLIVE TEXTURED
127510	TOLEDO TEXTURED
127512	DARK BROWN TEXTURED
127514	CARMINE TEXTURED
135818	BRIGHT WHITE SMOOTH
135819	BRIGHT WHITE TEXTURED

**NEWPORT PLANTER RND 436
WITH SELF-WATERING UNIT AND DRAIN HOLE**

PART NUMBER	COLOR
127749	FLAGSTONE SMOOTH
127751	LIME SMOOTH
127753	EBONY SMOOTH
127755	NATURAL SMOOTH
127739	CORDOBA SMOOTH
127741	OLIVE SMOOTH
127743	TOLEDO SMOOTH
127745	DARK BROWN SMOOTH
127747	CARMINE SMOOTH
127750	FLAGSTONE TEXTURED
127752	LIME TEXTURED
127754	EBONY TEXTURED
127756	NATURAL TEXTURED
127740	CORDOBA TEXTURED
127742	OLIVE TEXTURED
127744	TOLEDO TEXTURED
127746	DARK BROWN TEXTURED
127748	CARMINE TEXTURED
135844	BRIGHT WHITE SMOOTH
135845	BRIGHT WHITE TEXTURED

NOTE:
PLEASE USE THESE PART NUMBERS FOR ORDERING.

				THE INFORMATION CONTAINED IN THIS DRAWING IS THE SOLE PROPERTY OF BARKMAN CONCRETE LTD. ANY REPRODUCTION IN PART OR AS A WHOLE WITHOUT THE WRITTEN PERMISSION OF BARKMAN CONCRETE LTD. IS PROHIBITED.	<div>barkman™</div> <div>152 Brandt Street, Steinbach, MB R5G 0R2 T (204) 326 3445 or 1 800 461 2278 F (204) 326 5915 barkmanconcrete.com</div>	DESCRIPTION NEWPORT ROUND PL - 48"x 36"				PART NUMBER <div>-</div>					
00	12/4/2018	ISSUED FOR CUSTOMER'S REFERENCE				RD		INITIALS		MM/DD/YYYY	WEIGHT (lbs)	FINISH	PAPER SIZE	SHT NO. <div>2</div>	REV. # <div>00</div>
REV	DATE	DESCRIPTION				BY	DRAWN BY	RD	DATE	12/4/2018					
							CHECKED BY		DATE						
									403.00	PAINT	11 x 17 (B)				