



**barkman**<sup>™</sup>

# Beef & Dairy Product Guide



## Designed to Meet the Needs of Beef and Dairy Farming

When you purchase Barkman products, you benefit from more than 70 years of experience in producing innovative concrete products of the finest quality. We use only superior grade materials and apply the latest technologies (including computerized batching controls) in the

manufacturing processes. We maintain our own testing labs to ensure that Barkman products provide the ultimate in durability and endurance. At Barkman your satisfaction is our number one concern. You have our word on it.

## Feed Bunk



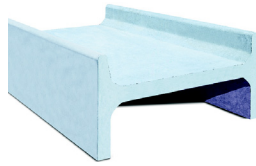
### Fence Line Feed Bunk

Size (L x W)

2438 x 1016 mm

96 x 40 in

*\*Can be made with end wall*

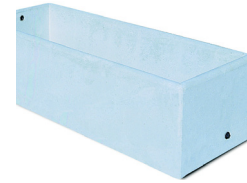


### H Line Feed Bunk

Size (L x W)

2438 x 1549 mm

96 x 61 in



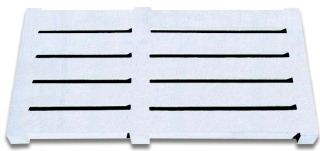
### Cattle Water Tank

Size (L x W)

2438 x 762 mm

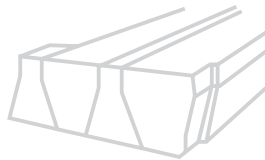
96 x 30 in

## Slats



### Cattle Gang Slat

Available in 42 in. widths. Lengths can vary from 4 ft. up to 12 ft. and are all 6 in. thick.



### Individual Cattle Slat

Individual slats are 5 in. wide. These are available in lengths from 4 ft.–12 ft. and 8 in. thick. Slats can be separated with spacers either 1.5 in. or 1.75 in. wide. Individual slats can be notched at the ends to 6 in. high to match up with the gang slats.

## Benefits

- Extra sure footing
- Modular design for easy installation
- Self-cleaning concrete slats
- Semi-dry precast concrete
- Designed for comfort and reduced injury

## Contact

### Steinbach Office

152 Brandt Street, Steinbach, MB R5G 0R2

T 204 326 3445 or 1 800 461 2278 F 204 326 5915

AG@BarkmanConcrete.com

**barkman**<sup>™</sup>

BarkmanConcrete.com