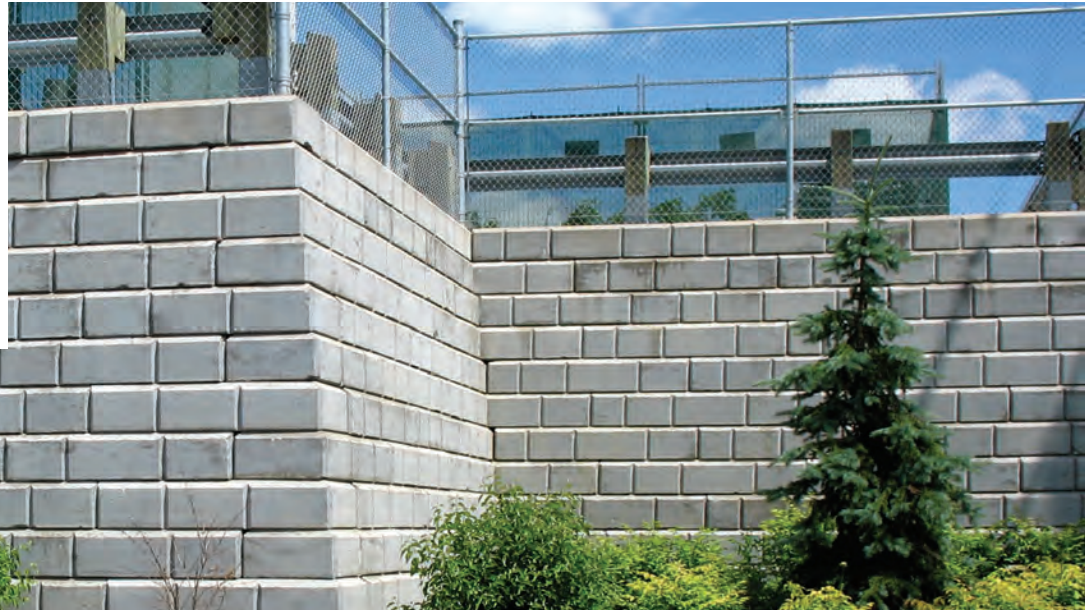


# DuraHold Wall



## The Solid Choice

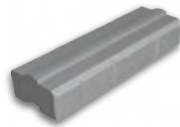
With high speed installation and long maintenance-free life, DuraHold is an excellent choice for your next industrial or commercial landscape application. It is an immense system (0.55m<sup>2</sup> [6ft<sup>2</sup>]/unit) that is ideal for demanding and complex projects.

Due to its structural stability and smooth texture, which greatly reduces water (flow) friction and ice adherence, DuraHold has become the ideal choice of Engineers for many water applications (lake, rivers, detention ponds & canals). The units are segmented to create a random block pattern and the normal battered effect can also be eliminated to establish a near vertical wall.

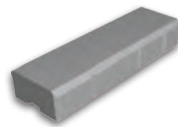


Grand Walls

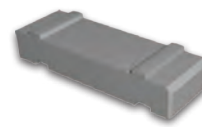
### SIZES (H X W X D)



Standard  
305 x 1829 x 610 mm  
12 x 72 x 24 in



Coping  
305 x 1829 x 610 mm  
12 x 72 x 24 in



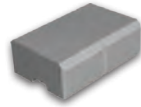
Tie Back  
305 x 1829 x 610 mm  
12 x 72 x 24 in



90° Corner  
305 x 1524 x 610 mm  
12 x 60 x 24 in



45° Corner  
305 x 1524 x 610 mm  
12 x 60 x 24 in



1/2 Standard  
305 x 914 x 610 mm  
12 x 36 x 24 in



1/2 Coping  
305 x 914 x 610 mm  
12 x 36 x 24 in

### COLOURS



Natural

## INSTALLATION NOTES

Half pieces and corner blocks available. Coping is the same as a standard unit but has flat top. Durahold is machine placed.

For more in depth installation guides for specific products, visit [BarkmanConcrete.com](http://BarkmanConcrete.com).

## BUNDLE CONFIGURATIONS

DESCRIPTION	UNIT					PALLET ROW			PALLET				
	SIZE (H X W X D)		FACE AREA		WEIGHT	NO. OF UNITS	FACE AREA		NO. OF UNITS	NO. OF ROWS	FACE AREA		WEIGHT
	MM	IN	M <sup>2</sup>	SQ FT	LB		M <sup>2</sup>	SQ FT			M <sup>2</sup>	SQ FT	LB
Standard	305 x 1829 x 610	12 x 72 x 24	.56	6.00	1740	-	-	-	2	-	-	-	3480
Coping	305 x 1829 x 610	12 x 72 x 24	.56	6.00	1710	-	-	-	2	-	-	-	3420
Tie Back	305 x 1829 x 610	12 x 72 x 24	-	-	1529	-	-	-	2	-	-	-	3058
90 Degree Corner	305 x 1524 x 610	12 x 60 x 24	-	-	1418	-	-	-	2	-	-	-	2836
45 Degree Corner	305 x 1524 x 610	12 x 60 x 24	-	-	1305	-	-	-	2	-	-	-	2610
1/2 Standard	305 x 914 x 610	12 x 36 x 24	.28	3.00	870	-	-	-	4	-	-	-	3480
1/2 Coping	305 x 914 x 610	12 x 36 x 24	.28	3.00	870	-	-	-	4	-	-	-	3480

### Steinbach Office

152 Brandt Street  
Steinbach, MB R5G 0R2  
T (800)-461-2278  
F (204)-326-5915

### Winnipeg Office

901 Gateway Road  
Winnipeg, MB R2K 3L1  
T (800)-342-2879  
F (204)-663-4854

### Vancouver Office

2104-290 Newport Drive  
Port Moody, BC V3H 5N2  
T (778)-689-7670  
F (604)-949-0321

### Calgary Office

813 McCool St. Box 1136  
Crossfield, AB T0M 0S0  
T (403)-946-4630  
F (403)-946-4631

