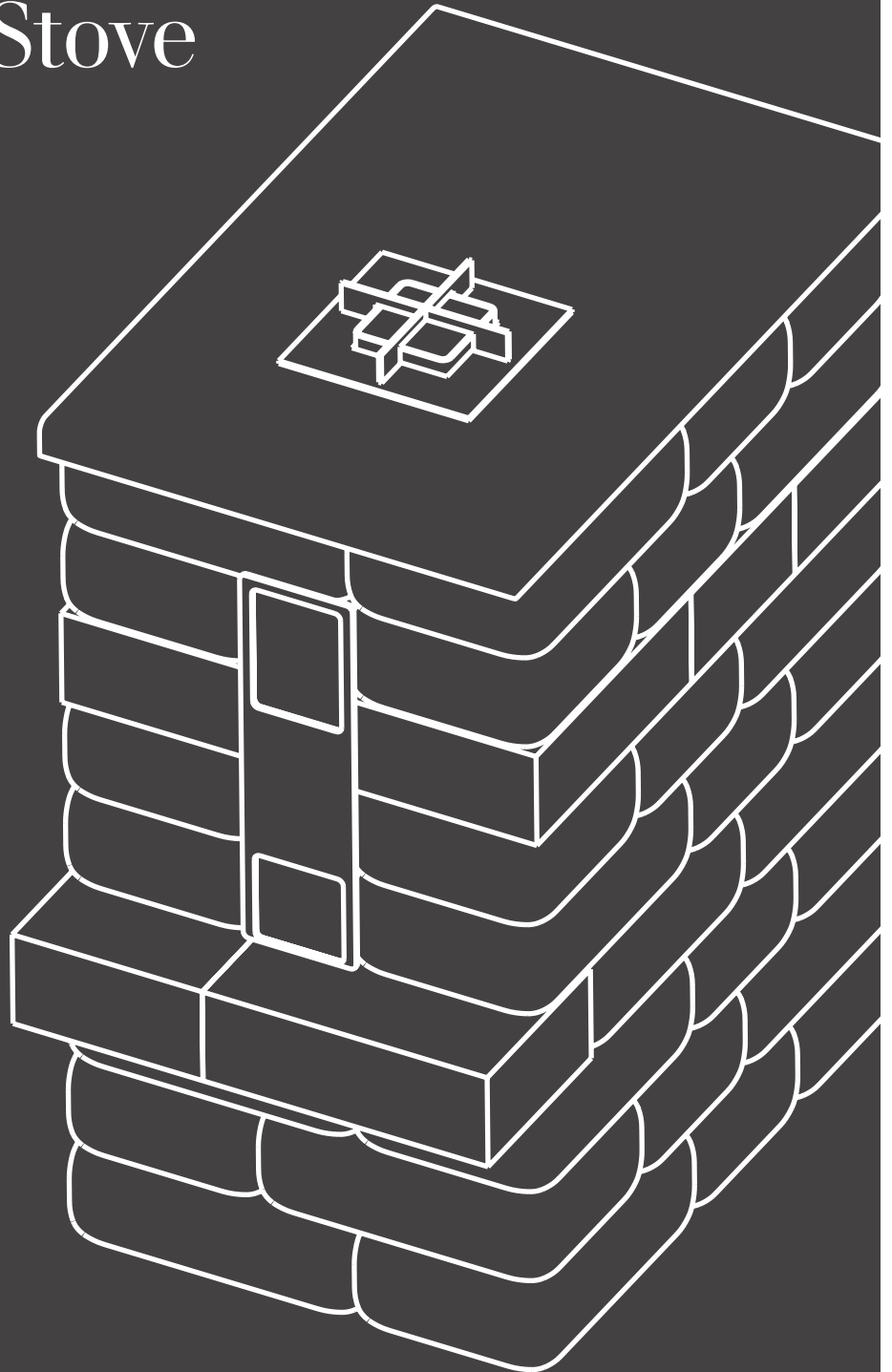


barkman™

Barkman Landscape Kits

Quarry Stone Rocket Stove



Materials

This kit measures 20" x 33.5" x 37.5"

MATERIALS INCLUDED:

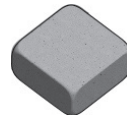
- 12" x 8" Quarry Stone Sierra Grey – 34 pieces
- 8" x 8" Quarry Stone Sierra Grey – 13 pieces
- 12" x 8" Smooth Quarry Stone Charcoal – 5 pieces
- 8" x 8" Smooth Quarry Stone Charcoal – 3 pieces
- Rocket Stove Assembly
- Rocket Stove Countertop
- Trim
- Cooking Element
- Face Plate
- Plastic Shims
- Tube of Landscape Glue
- Gloves
- Instruction Guide

OTHER ITEMS NEEDED:

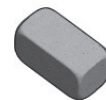
- Rubber Mallet
- Caulking Gun
- Measuring Tape/Ruler
- Level



12 x 8 Quarry Stone
Sierra Grey



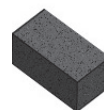
8 x 8 Quarry Stone
Sierra Grey



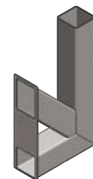
4 x 8 Quarry Stone
Sierra Grey



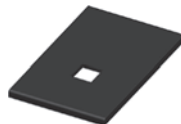
12 x 8 Quarry Stone
Charcoal



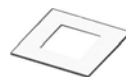
4 x 8 Quarry Stone
Charcoal



Rocket Stove
Assembly



Rocket Stove
Countertop



Trim



Cooking
Element

Base Preparation

If installing your Barkman Quarry Stone Rocket Stove on an unstructured base, please ensure to follow these steps:

- Excavate area approx. 9 inches below grade.
- Excavate approx. 6 inches larger than your actual kit dimensions to ensure a stable base.
- Fill with $\frac{3}{4}$ inch down limestone and compact firmly.
- Level out $\frac{1}{2}$ inch of sand and install kit as per the instruction guide.

If you are installing on a solid base such as an existing patio, base prep is not necessary. Please proceed to the first step.

These instructions may not refer to all base conditions. As this kit is incredibly heavy, base prep will greatly depend on existing ground conditions and may require alternate techniques.

Note: This manual was updated on January 2020. For manual updates, check www.barkmanconcrete.com/resources

Read Prior to Installation

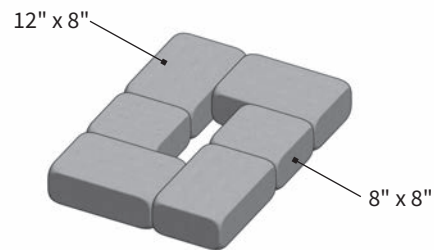
IMPORTANT:

1. The consumer is responsible for reviewing the local regulations pertaining to the installation and use of this product. Please confirm that use of this product is in compliance with the by-laws, regulations, building codes and laws of your jurisdiction before using.
2. Make sure that you locate your respective gas lines, wires, water pipes, and/or any above ground and underground services in your area and install your Barkman Quarry Stone Wood Grill in the proper distance away from them. Check with your provider for location and distance requirements prior to installation.
3. Check with your insurance provider concerning the installation, use, value implications and/or any other considerations in regard to your Barkman Quarry Stone Rocket Stove Kit.

Instructions

1

- A** Lay down the first layer as shown in the diagram.
- B** Check that stones are level at every step. Use included shims for adjustments.



USE:

- (4) 12 x 8 Sierra Grey blocks
- (2) 8 x 8 Sierra Grey blocks

2

- A** Lay down the second layer as shown in the diagram.
- B** Check that stones are level. Use included shims for adjustments.



USE:

- (4) 12 x 8 Sierra Grey blocks
- (2) 8 x 8 Sierra Grey blocks

3

- A** Repeat the pattern from Step 1 as shown in the diagram.
- B** Check that stones are level. Use included shims for adjustments.

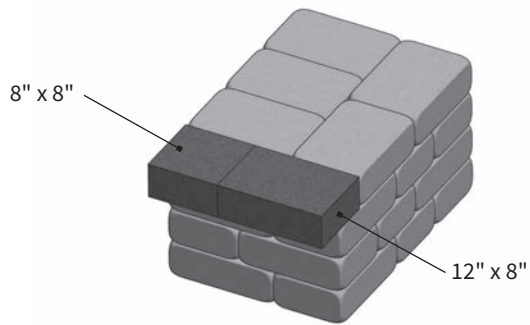
USE:
(4) 12 x 8 Sierra Grey blocks
(2) 8 x 8 Sierra Grey blocks



4

- A** Lay down the fourth layer as shown using both Charcoal and Sierra Grey blocks to cover the hole.
- B** Make sure to glue this layer down.

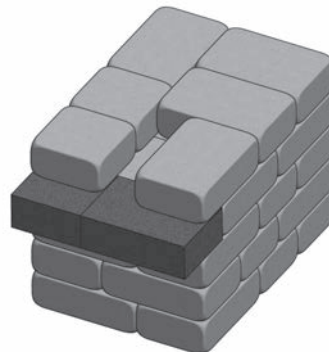
USE:
(5) 12 x 8 Sierra Grey blocks
(1) 12 x 8 Charcoal blocks
(1) 8 x 8 Charcoal blocks



5

- A** Lay down the fifth layer as shown but do not glue the blocks.
- B** Shim and level as needed.

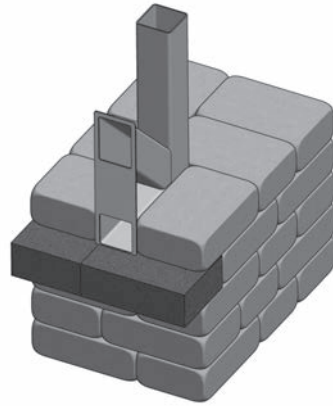
USE:
(4) 12 x 8 Sierra Grey blocks
(2) 4 x 8 Sierra Grey blocks



6

- A** Place the Rocket Stove Assembly into the gap between the blocks.
- B** Glue blocks to hold it in place (optional).

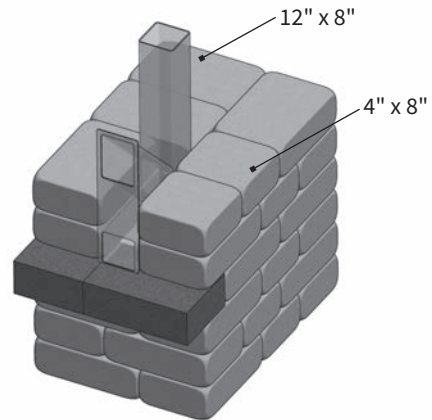
USE:
(1) Rocket Stove Assembly



7

- A** Lay down the sixth layer as shown in the diagram.
- B** Check that stones are level. Use included shims for adjustments.

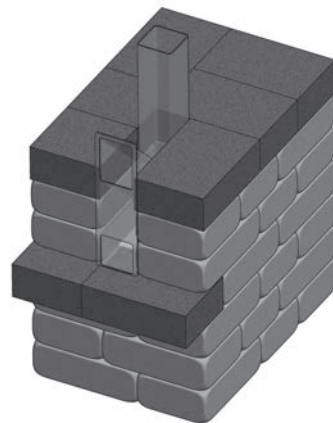
USE:
(4) 12 x 8 Sierra Grey blocks
(2) 8 x 8 Sierra Grey blocks



8

- A** Lay down the Quarry Stone Charcoal blocks as shown.
- B** Check that stones are level. Use included shims for adjustments.

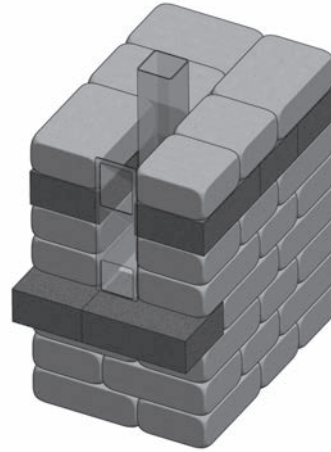
USE:
(4) 12 x 8 Charcoal blocks
(2) 8 x 8 Charcoal blocks



9

- A** Repeat the pattern on Step 7 as shown in the diagram.
- B** Glue the 9th layer to hold it in place.

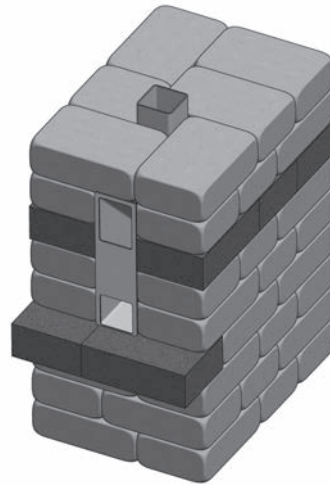
USE:
(4) 12 x 8 Sierra Grey blocks
(2) 8 x 8 Sierra Grey blocks



10

- A** Lay down the layer as shown in the diagram.

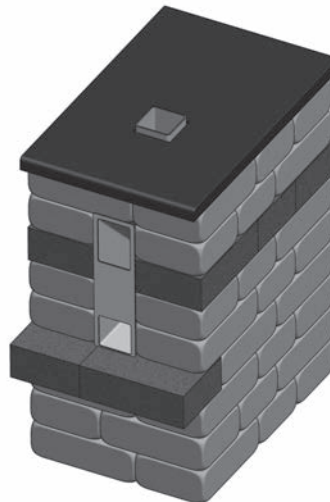
USE:
(5) 12 x 8 Sierra Grey blocks
(1) 8 x 8 Sierra Grey blocks



11

- A** Gently level and place countertop as shown.
- B** Glue this down to the Quarry Stone below.

USE:
(1) Rocket Stove Countertop

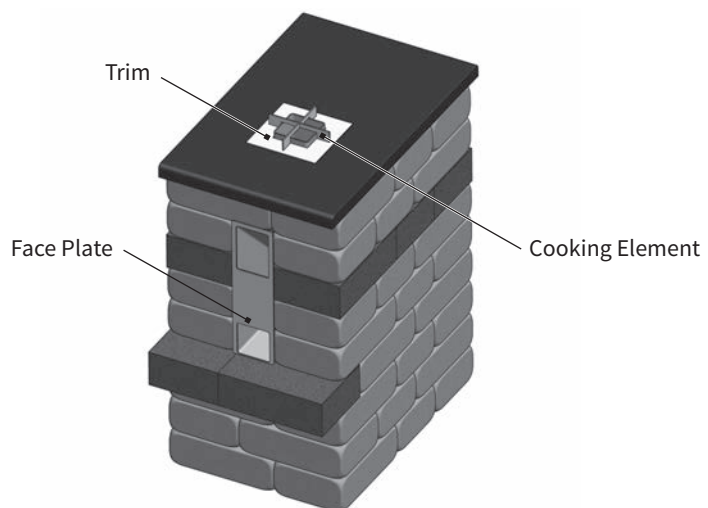


12

- A** Place the Trim around the top of the Rocket Stove Assembly.
- B** Connect the Cooking Element to the top of the Rocket Stove Assembly.

USE:

- (1) Trim
- (1) Cooking Element
- (1) Face Plate



barkman™

STEINBACH OFFICE

152 Brandt Street,
Steinbach, MB R5G 0R2
T 204 326 3445 or 1 800 461 2278
F 204 326 5915
Steinbach@BarkmanConcrete.com

WINNIPEG OFFICE

901 Gateway Road,
Winnipeg, MB R2K 3L1
T 204 667 3310 or 1 800 342 2879
F 204 663 4854
Winnipeg@BarkmanConcrete.com

CALGARY OFFICE

813 McCool Street, Box 1136,
Crossfield, AB T0M 0S0
T 403 946 4630 F 403 946 4631
Calgary@BarkmanConcrete.com

VANCOUVER OFFICE

2104-290 Newport Drive,
Port Moody, BC V3H 5N2
T 778 689 7670 or 1 800 461 2278
F 604 949 0321
Vancouver@BarkmanConcrete.com

SASKATOON DISTRIBUTION CENTER

3550 Idylwyld Drive North,
Saskatoon, SK S7L 6G3
T 1 306 549 7544

KELOWNA DISTRIBUTION CENTER

1904 Old Okanagan Highway,
Westbank, BC V4T 1T8
T 1 204 346 9490

SURREY DISTRIBUTION CENTER

8157 132nd Street,
Surrey, BC V3W 4N5
T 1 204 346 9490

BARKMAN CONCRETE LIMITED

BarkmanConcrete.com

