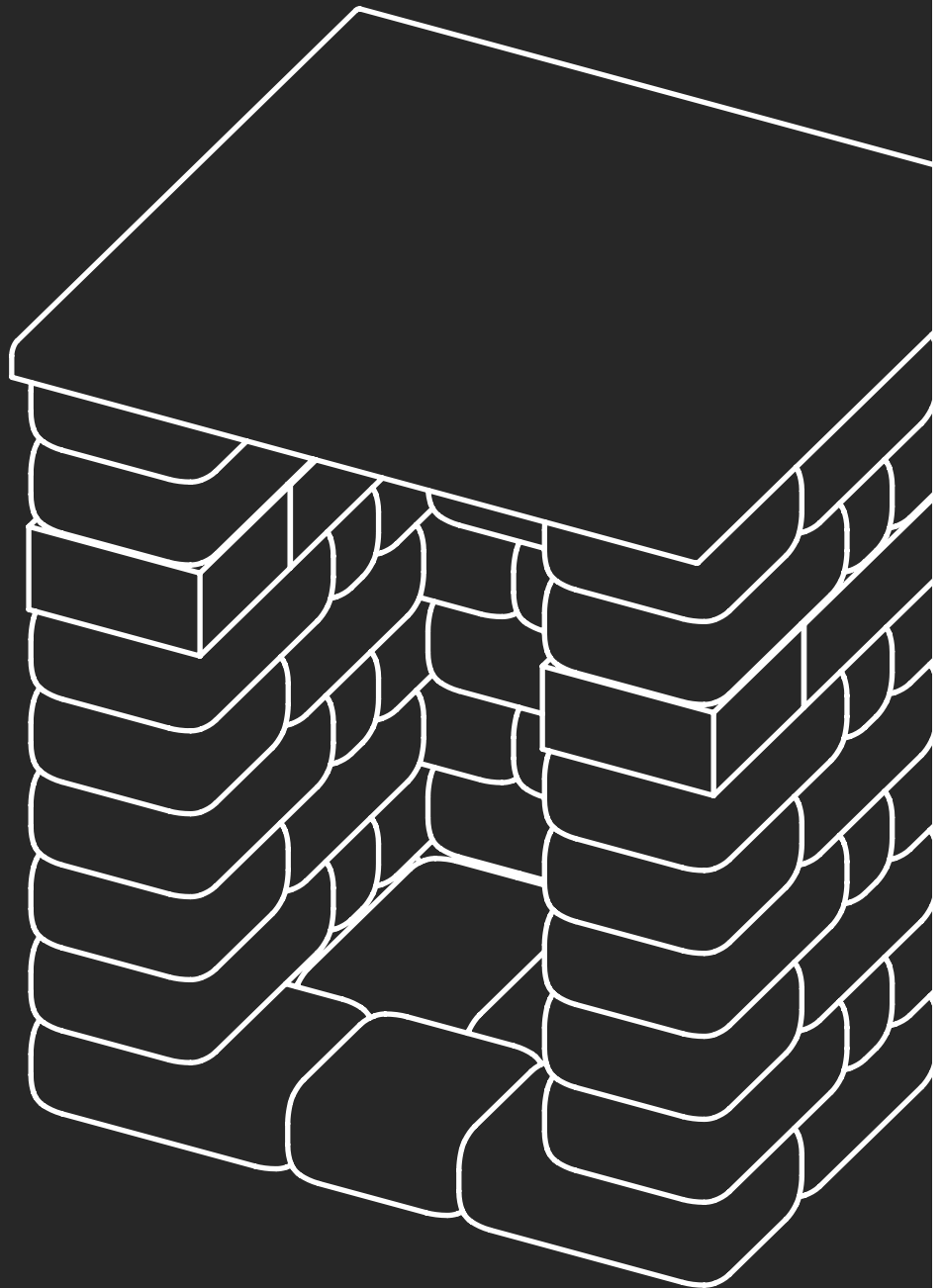


barkman™

Barkman Landscape Kits

Quarry Stone Storage Unit

—
*For use as a Compact
Pizza Oven base or as
a stand-alone unit.*



Materials

This kit measures 37.06 x 31 x 37.5 in (excluding Nonno Peppe Pizza Oven)

MATERIALS INCLUDED:

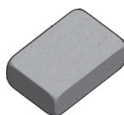
- 12" x 8" Quarry Stone Sierra Grey – 36 pieces
- 8" x 8" Quarry Stone Sierra Grey – 19 pieces
- 4" x 8" Quarry Stone Sierra Grey – 8 pieces
- 12" x 8" Smooth Quarry Stone Charcoal – 4 pieces
- 8" x 8" Smooth Quarry Stone Charcoal – 3 pieces
- 1-piece Countertop
- Optional Extended Countertop
- Plastic Shims

PIZZA OVEN KIT ONLY

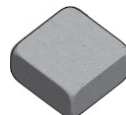
- Nonno Peppe Pizza Oven – 1 piece

OTHER ITEMS NEEDED:

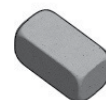
- Rubber Mallet
- Caulking Gun
- Measuring Tape/Ruler
- Level



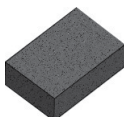
12 x 8 Quarry Stone Sierra Grey



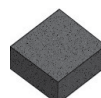
8 x 8 Quarry Stone Sierra Grey



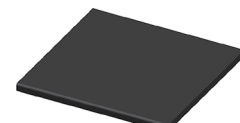
4 x 8 Quarry Stone Sierra Grey



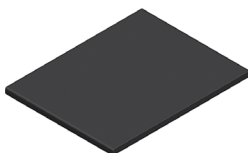
12 x 8 Smooth Quarry Stone Charcoal



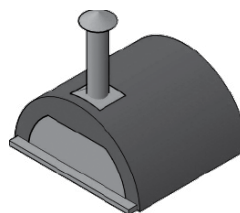
8 x 8 Smooth Quarry Stone Charcoal



Compact Pizza Oven Countertop



Compact Pizza Oven Countertop



Nonno Peppe Pizza Oven (Pizza Oven Kit Only)

Base Preparation

If installing your Barkman Quarry Stone Storage Unit on an unstructured base, please ensure to follow these steps:

- Excavate area approx. 9 inches below grade.
- Excavate approx. 6 inches larger than your actual kit dimensions to ensure a stable base.
- Fill with ¾ inch down limestone and compact firmly.
- Level out ½ inch of sand and install kit as per the instruction guide.

If you are installing on a solid base such as an existing patio, base prep is not necessary. Please proceed to the first step.

These instructions may not refer to all base conditions. As this kit is incredibly heavy, base prep will greatly depend on existing ground conditions and may require alternate techniques.

Note: This manual was updated in May 2021. For manual updates, check www.barkmanconcrete.com/resources

Instructions

1

A On your prepared base, lay out the first layer as indicated in the diagram.

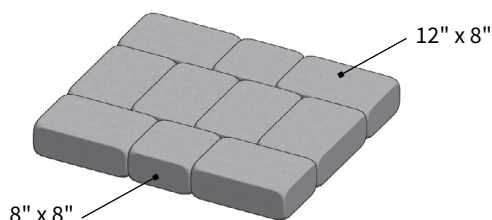
B Check that stones are level at every step. Use included shims for adjustments.

USE:

(8) 8 x 12 Sierra Grey blocks

(2) 8 x 8 Sierra Grey blocks

IMPORTANT: Periodic checks must be made to ensure that the layers remain level. If layers are not level, use the included shims to adjust as necessary.



2

A Lay out the second layer as shown in the diagram.

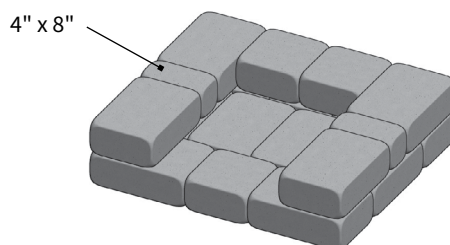
B Check that stones are level. Use included shims for adjustments.

USE:

(4) 8 x 12 Sierra Grey blocks

(2) 8 x 8 Sierra Grey blocks

(2) 4 x 8 Sierra Grey blocks



3

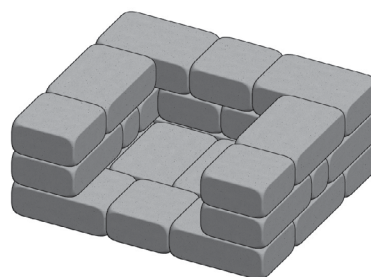
A Lay out the third layer as shown in the diagram.

B Check that stones are level. Use included shims for adjustments.

USE:

(4) 8 x 12 Sierra Grey blocks

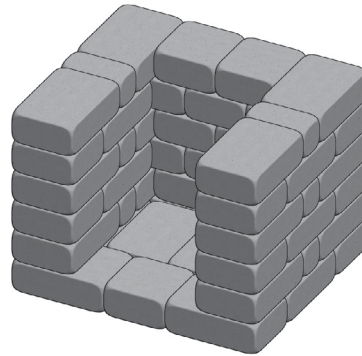
(3) 8 x 8 Sierra Grey blocks



4

- A** Repeat steps 2 and 3 to the height of 6 layers.
- B** Check that stones are level. Use included shims for adjustments.

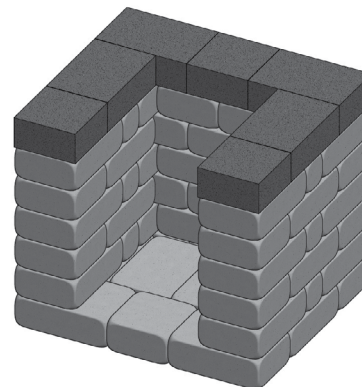
USE:
(12) 8 x 12 Sierra Grey blocks
(7) 8 x 8 Sierra Grey blocks
(4) 4 x 8 Sierra Grey blocks



5

- A** Lay out the accent band pieces as indicated in the diagram.

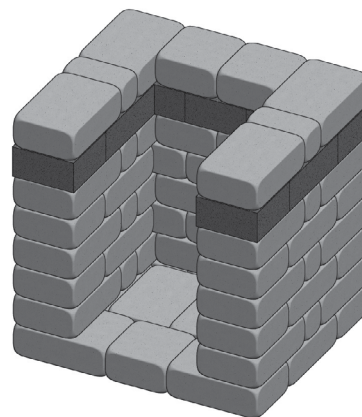
USE:
Use (4) Charcoal blocks
Use (3) Charcoal blocks



6

- A** Lay out the layer of Quarry Stone above the accent band as indicated in the diagram.
- B** Check that stones are level. Use included shims for adjustments.

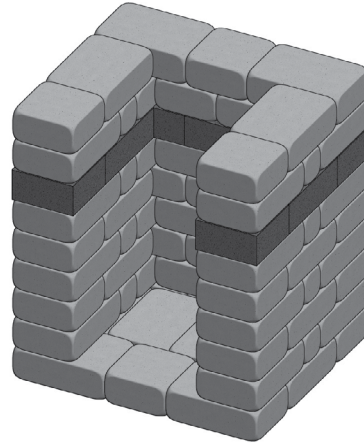
USE:
(4) 8 x 12 Sierra Grey blocks
(2) 8 x 8 Sierra Grey blocks
(2) 4 x 8 Sierra Grey blocks



7

- A** Lay out the ninth layer as shown in the diagram.
- B** Check that stones are level. Use included shims for adjustments.

USE:
(4) 8 x 12 Sierra Grey blocks
(3) 8 x 8 Sierra Grey blocks

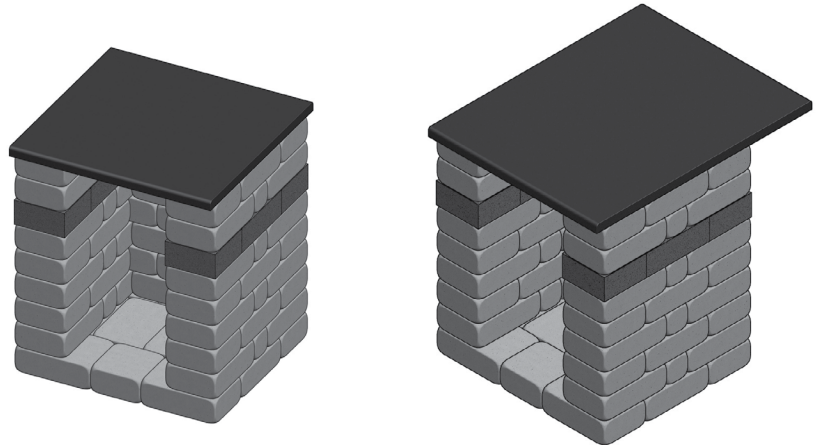


8

- A** Place the 1-piece Countertop or optional Extended Countertop on top of the Quarry Stone. Make sure to glue the countertop in place.
- B** Ensure the counter top is level using the included shims.

USE:
(1) 1-piece Countertop

OR:
(1) Extended Countertop



1-piece Countertop

Extended Countertop

9 PIZZA OVEN VARIANT ONLY

- A** Refer to Nonno Peppe Pizza Oven Instructions for installation, use and maintenance.

USE:
Use (1) Nonno Peppe Pizza Oven

barkman™

STEINBACH OFFICE

152 Brandt Street,
Steinbach, MB R5G 0R2
T 204 326 3445 or 1 800 461 2278
F 204 326 5915
Steinbach@BarkmanConcrete.com

WINNIPEG OFFICE

901 Gateway Road,
Winnipeg, MB R2K 3L1
T 204 667 3310 or 1 800 342 2879
F 204 663 4854
Winnipeg@BarkmanConcrete.com

CALGARY OFFICE

813 McCool Street, Box 1136,
Crossfield, AB T0M 0S0
T 403 946 4630
F 403 946 4631
Calgary@BarkmanConcrete.com

VANCOUVER OFFICE

Port Moody, BC
T 1 800 461 2278
F 604 949 0321
Vancouver@BarkmanConcrete.com

MERRITT OFFICE

1132 Middy Valley Road
Merritt, BC V1K 1M9
T 778 661 1408

SASKATOON DISTRIBUTION CENTER

3550 Idylwyld Drive North,
Saskatoon, SK S7L 6G3
T 1 800 461 2278

BARKMAN CONCRETE LIMITED

BarkmanConcrete.com

