

Roman Circle



Capture the Essence of Rome

The Roman Circle is perfect for any patio or feature area. Available in 3 different colours, the Roman Circle adds an old world charm to your back or front yard terrace.

Roman is one of Barkman's most popular and multifaceted pavers. Roman's thickness, as well as its wide range of sizes and colors, make it suitable for nearly any project including backyard patios, driveways, and walkways. Unlike many other pavers, Roman is tumbled, giving it a well-worn, weathered appearance that will never go out of style.

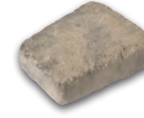
SIZES (L X W X H)



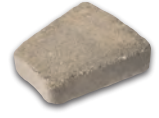
210 x 210 x 60 mm
8.25 x 8.25 x 2.36 in



210 x 157 x 60 mm
8.25 x 6.19 x 2.36 in



210 x 178 x 60 mm
8.25 x 7 x 2.36 in



210 x 197 x 60 mm
8.25 x 7.75 x 2.36 in



210 x 229 x 60 mm
8.25 x 9 x 2.36 in

COLOURS



Antique Brown



Charcoal



Sierra Grey



Driveways

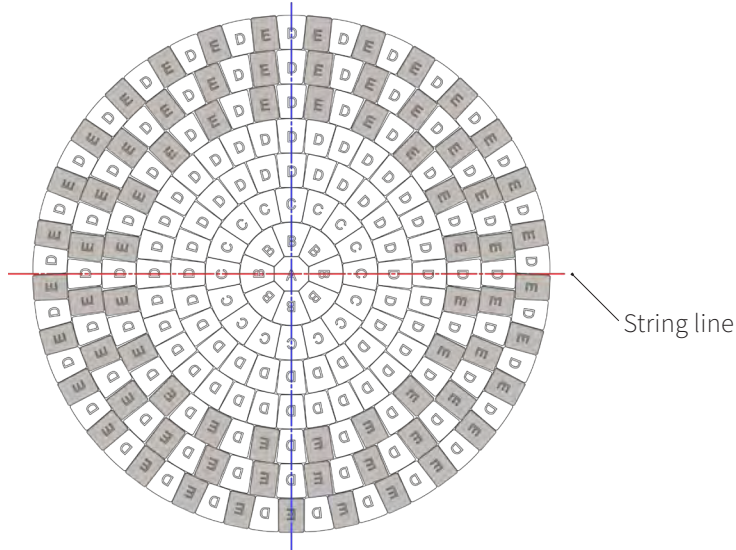


Grand Patios



Patios

PATTERNS



One circle bundle covers 83.86 sq ft, 10 1/8 ft in diameter.

Note:

Space between rows is 2mm.

Space between pavers vary from 2mm-5mm

Course No.	<div style="display: flex; justify-content: space-around; align-items: center;"> <div style="text-align: center;">A 8 1/2" x 8 1/2"</div> <div style="text-align: center;">B 8 1/2" x 9"</div> <div style="text-align: center;">C 8 1/2" x 7 1/4"</div> <div style="text-align: center;">D 8 1/2" x 7"</div> <div style="text-align: center;">E 8 1/2" x 6 1/4"</div> </div>				
	8 1/2" x 8 1/2"	8 1/2" x 9"	8 1/2" x 7 1/4"	8 1/2" x 7"	8 1/2" x 6 1/4"
Center	1	0	0	0	0
1	0	8	0	0	0
2	0	0	16	0	0
3	0	0	0	24	0
4	0	0	0	32	0
5	0	0	0	20	20
6	0	0	0	24	24
7	0	0	0	29	29
Total	9	9	18	128	73
Extra	8	1	2	7	8

BUNDLE CONFIGURATIONS

DESCRIPTION	UNIT					PALLET				
	SIZE (OUTSIDE DIAMETER X H)		FACE AREA		WEIGHT	NO. OF UNITS	NO. OF ROWS	FACE AREA		WEIGHT
	MM	IN	M ²	SQ FT	LB			M ²	SQ FT	LB
Roman Circle Bundle	3148 x 60	123.96 x 2.36	-	-	-	1	-	7.79	83.86	2607

Steinbach Office

152 Brandt Street
Steinbach, MB R5G 0R2
T (800)-461-2278
F (204)-326-5915

Winnipeg Office

901 Gateway Road
Winnipeg, MB R2K 3L1
T (800)-342-2879
F (204)-663-4854

Vancouver Office

2104-290 Newport Drive
Port Moody, BC V3H 5N2
T (778)-689-7670
F (604)-949-0321

Calgary Office

813 McCool St. Box 1136
Crossfield, AB T0M 0S0
T (403)-946-4630
F (403)-946-4631

