

**barkman™**

# Diamond Face Slab



## An Updated Classic

Barkman's newly updated Diamond Face Slab is a great option for quickly laying down pathways or utility pads at a job site or in your own backyard. The thickness of each size has been increased to 2 inches and the surface texture has been significantly improved upon, resulting in a product that is more durable than its predecessor.

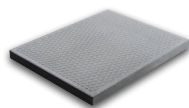


Paths

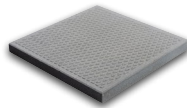


Patios

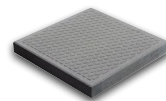
### SIZES (L X W X H)



610 x 762 x 51 mm  
24 x 30 x 2 in



610 x 610 x 51 mm  
24 x 24 x 2 in



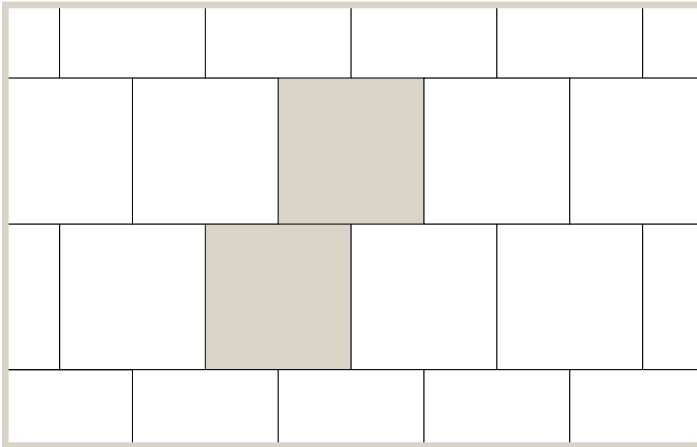
457 x 457 x 51 mm  
18 x 18 x 2 in

### COLOURS

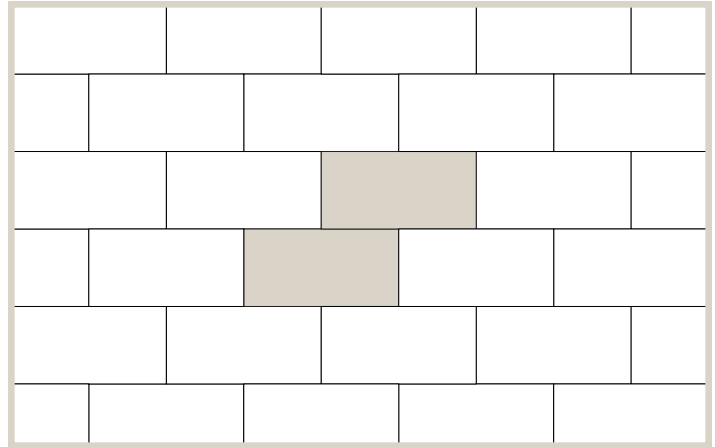


Natural

## PATTERNS



Pattern 1



Pattern 2

## INSTALLATION NOTES

Barkman recommends the use of polymeric sand for commercial applications. A plate compactor should be used over the entire surface following installation. When installing this product, make sure to include a 2-5mm gap between each unit. This will provide

enough room for the jointing sand and make installation easier. For more in depth installation guides for specific products, visit [BarkmanConcrete.com](https://www.barkmanconcrete.com).

## BUNDLE CONFIGURATIONS

DESCRIPTION	UNIT					PALLET				
	SIZE (L X W X H)		FACE AREA		WEIGHT	NO. OF UNITS	NO. OF ROWS	FACE AREA		WEIGHT
	MM	IN	M <sup>2</sup>	SQ FT	LB			M <sup>2</sup>	SQ FT	LB
18 x 18	457 x 457 x 51	18 x 18 x 2	0.21	2.25	53.95	40	-	8.35	89.92	2158
24 x 24	610 x 610 x 51	24 x 24 x 2	0.37	4	96.13	20	-	7.44	80	1923
24 x 30	610 x 762 x 51	24 x 30 x 2	0.46	5	120.08	20	-	9.30	100.07	2402

### Steinbach Office

152 Brandt Street  
Steinbach, MB R5G 0R2  
T (800)-461-2278  
F (204)-326-5915

### Winnipeg Office

901 Gateway Road  
Winnipeg, MB R2K 3L1  
T (800)-342-2879  
F (204)-663-4854

### Calgary Office

813 McCool St. Box 1136  
Crossfield, AB T0M 0S0  
T (403)-946-4630  
F (403)-946-4631

### Vancouver Office

Port Moody, BC  
T 1 800 461 2278  
F (604)-949-0321

### Merritt Office

1132 Midday Valley Rd  
Merritt, BC V1K 1M9  
T (778)-661-1408

