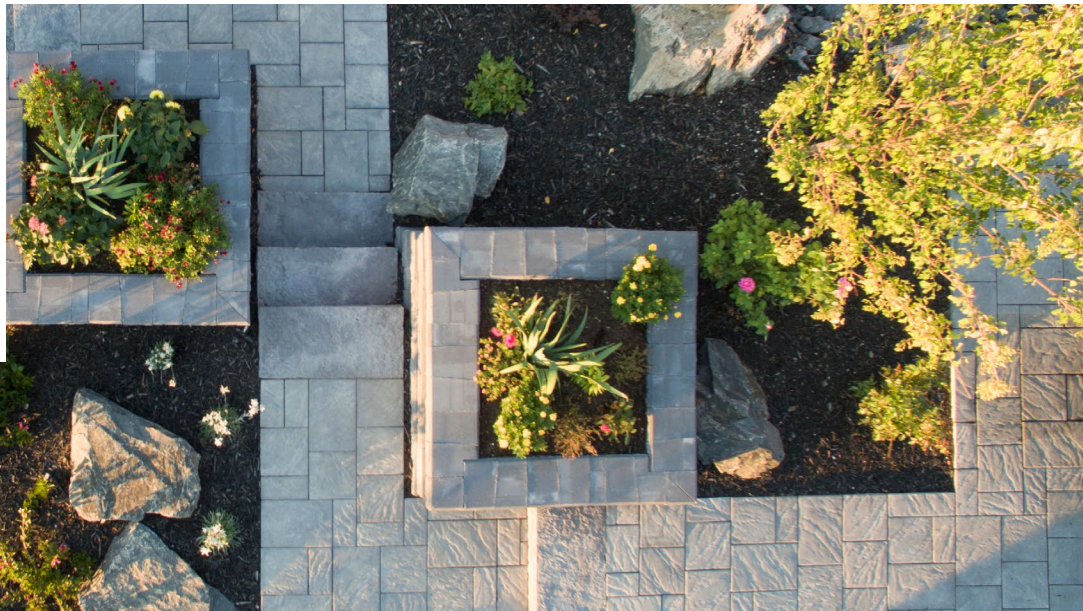


barkman™

Navarro Paver



Echoes of the Pacific Coast

Navarro's weathered slate surface unlocks memories of a seaside resort. At 3 1/8" thick, the Navarro paver can withstand heavy traffic in any application and features a built-in paver spacer that allows for easy installation with a smooth finish. This paver system gives you limitless artistic design, flexible durability and is ideal for discriminating developers or builders who want their projects to reflect a high-quality standard. Navarro comes in three sizes on one pallet.



Driveways



Grand Patios



Patios



Pools



Paths



Thoroughfares

SIZES (L X W X H)



306 x 459 x 80 mm
12.05 x 18.07 x 3.15 in

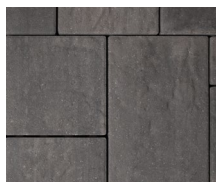


306 x 306 x 80 mm
12.05 x 12.05 x 3.15 in

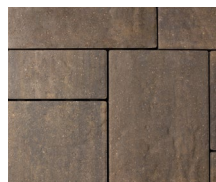


306 x 153 x 80 mm
12.05 x 6.02 x 3.15 in

COLOURS

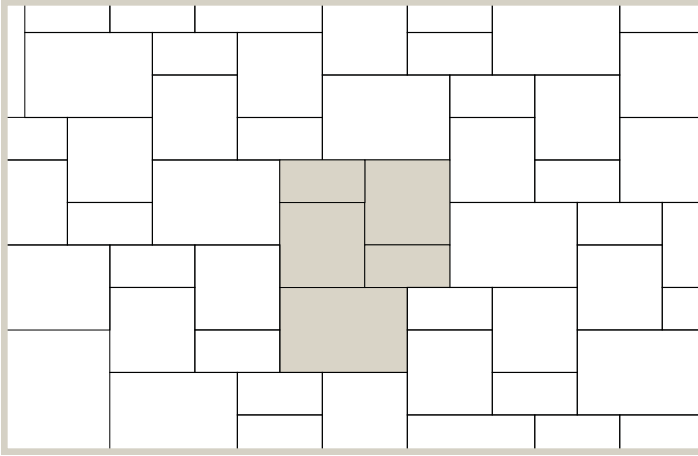


Charcoal

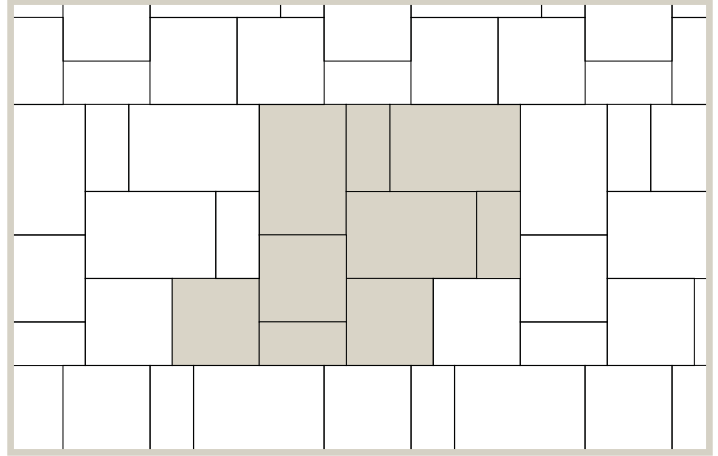


Sierra Grey

PATTERNS



Pattern 1



Pattern 2

INSTALLATION NOTES

Barkman recommends the use of polymeric sand for commercial applications. A plate compactor should be used over the entire surface following installation. Available to order in full pallets

only. For more in depth installation guides for specific products, visit BarkmanConcrete.com.

BUNDLE CONFIGURATIONS

DESCRIPTION	UNIT					PALLET ROW				PALLET			
	SIZE (L X W X H)		FACE AREA		WEIGHT	NO. OF UNITS	FACE AREA		NO. OF UNITS	NO. OF ROWS	FACE AREA		WEIGHT
	MM	IN	M ²	SQ FT	LB		M ²	SQ FT			M ²	SQ FT	LB
12 x 6	306 x 153 x 80	12.05 x 6.02 x 3.15	0.05	0.5	19	-	-	-	35	-	7.80	84	3100
12 x 12	306 x 306 x 80	12.05 x 12.05 x 3.15	0.09	1	38	-	-	-	35	-			
12 x 18	306 x 459 x 80	12.05 x 18.07 x 3.15	0.14	1.50	57	-	-	-	21	-			

Steinbach Office

152 Brandt Street
Steinbach, MB R5G 0R2
T (800)-461-2278
F (204)-326-5915

Winnipeg Office

901 Gateway Road
Winnipeg, MB R2K 3L1
T (800)-342-2879
F (204)-663-4854

Calgary Office

813 McCool St. Box 1136
Crossfield, AB T0M 0S0
T (403)-946-4630
F (403)-946-4631

Vancouver Office

Port Moody, BC
T 1 800 461 2278
F (604)-949-0321

Merritt Office

1132 Midday Valley Rd
Merritt, BC V1K 1M9
T (778)-661-1408

