

**barkman™**

# Verano Paver



## Palatial Style

Verano strikes the perfect balance between simplicity and sophistication. With its smooth surface and refined edges, Verano is the ideal choice for modern and contemporary homes. At 2 inches thick, Verano is also suitable for driveways and other spaces that receive heavy traffic.

A non-chamfered version of Verano is also available as a custom order and is ideal for American/Canadian Disability Act (ADA/CDA) compliance.



Patios



Pools



Paths

## SIZES (L X W X H)



292.1 x 292.1 x 60 mm  
11.5 x 11.5 x 2.36 in

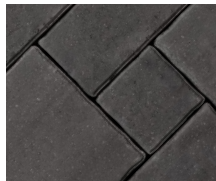


292.1 x 146.1 x 60 mm  
11.5 x 5.75 x 2.36 in

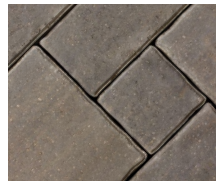


146.1 x 146.1 x 60 mm  
5.75 x 5.75 x 2.36 in

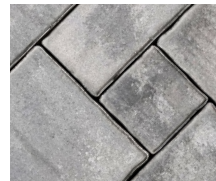
## COLOURS



Charcoal

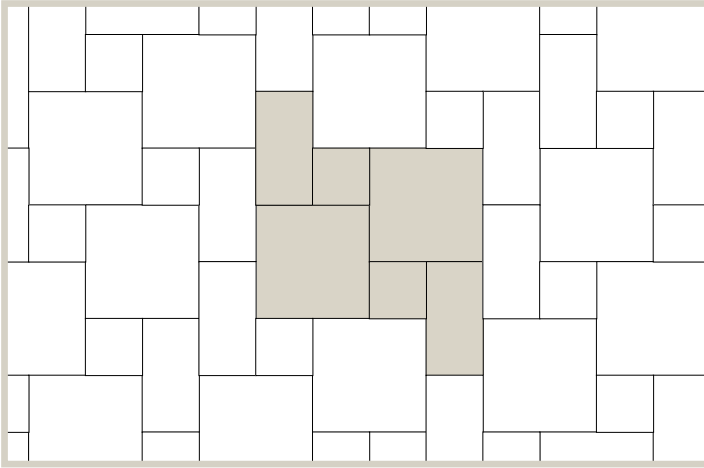


Sierra Grey

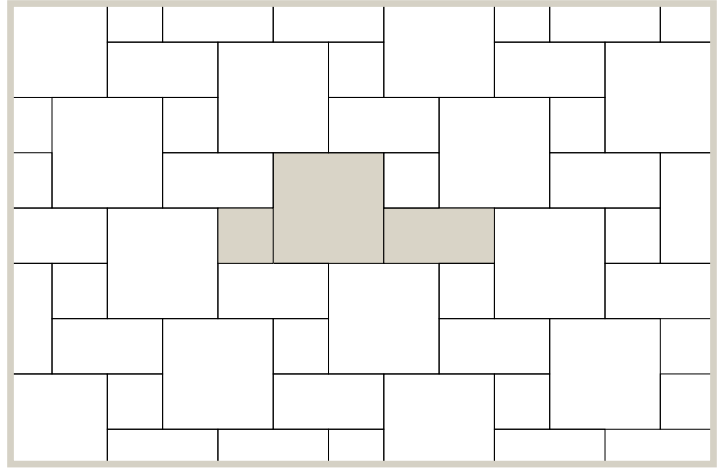


Sterling

## PATTERNS



Pattern 1



Pattern 2

## INSTALLATION NOTES

Barkman recommends the use of polymeric sand for commercial applications. A plate compactor should be used over the entire surface following installation with the use of a Paver Saver Mat. Each bundle contains 96 sq. ft. with all three sizes combined.

Available to order in full pallets only. Verano is a non-tumbled paver with smooth face. For more in depth installation guides for specific products, visit [BarkmanConcrete.com](http://BarkmanConcrete.com).

## BUNDLE CONFIGURATIONS

DESCRIPTION	UNIT					PALLET ROW				PALLET			
	SIZE (L X W X H)		FACE AREA		WEIGHT	NO. OF UNITS	FACE AREA		NO. OF UNITS	NO. OF ROWS	FACE AREA		WEIGHT
	MM	IN	M <sup>2</sup>	SQ FT	LB		M <sup>2</sup>	SQ FT			M <sup>2</sup>	SQ FT	LB
6 x 6	146.1 x 146.1 x 60	5.75 x 5.75 x 2.36	0.02	0.23	6	-	-	-	60	-	8.92	96	2784
12 x 6	292.1 x 146.1 x 60	11.5 x 5.75 x 2.36	0.04	0.46	13	-	-	-	60	-			
12 x 12	292.1 x 292.1 x 60	11.5 x 11.5 x 2.36	0.09	0.92	25	-	-	-	60	-			

### Steinbach Office

152 Brandt Street  
Steinbach, MB R5G 0R2  
T (800)-461-2278  
F (204)-326-5915

### Winnipeg Office

901 Gateway Road  
Winnipeg, MB R2K 3L1  
T (800)-342-2879  
F (204)-663-4854

### Calgary Office

813 McCool St. Box 1136  
Crossfield, AB T0M 0S0  
T (403)-946-4630  
F (403)-946-4631

### Vancouver Office

Port Moody, BC  
T 1 800 461 2278  
F (604)-949-0321

### Merritt Office

1132 Midday Valley Rd  
Merritt, BC V1K 1M9  
T (778)-661-1408

