

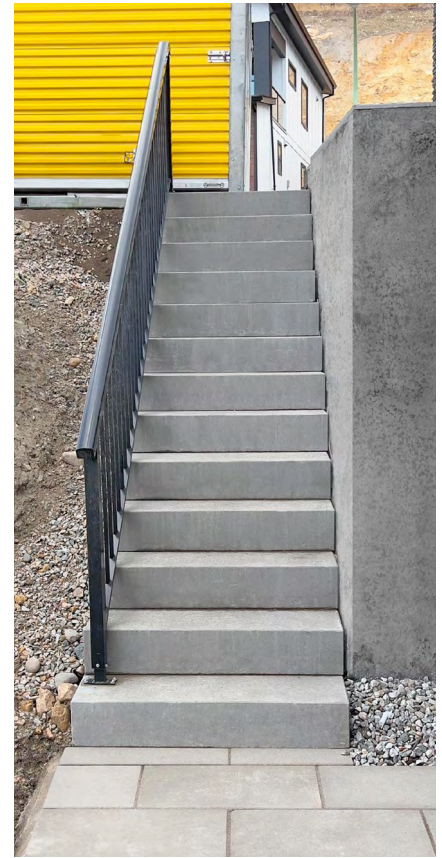
barkman™

SPECIFICATION GUIDE

# KEYSTONE LINEAR®







# KEYSTONE LINEAR®

Keystone Linear® is a sleek and modern retaining wall system that is perfect for both residential and commercial use.

Each block is double-sided, allowing for versatility in design. Keystone's pin system enables pieces to be installed flush or pushed in or out to create a randomized façade.

This wall is designed so that both standard and coping work as corners, ensuring a seamless and uniform look. Additionally, the coping can also be used as a stand-alone step or integrated perfectly into an existing Keystone Linear wall.

Whether you're looking to add a touch of elegance to your outdoor space or create a modern feel for your commercial property, Keystone Linear is the perfect solution.

## SIZES



**Standard**  
178 x 1000 x 350  
7 x 39.37 x 13.78



**Coping**  
178 x 1000 x 350  
7 x 39.37 x 13.78

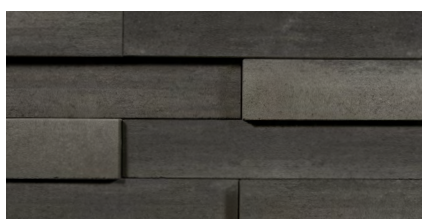
## COLOURS



Charcoal



Natural



Graphite

# SPECIFICATIONS

## PART 1: GENERAL

---

### 1.01 Description

- A. Work shall consist of designing, furnishing and construction of a Keystone Linear unit retaining wall system in accordance with these specifications and in reasonably close conformity with the lines, grades, design and dimensions shown on the plans. No alternate wall systems will be considered.
- B. Work includes preparing foundation soil, furnishing and installing leveling pad, unit facing system, unit drainage fill and reinforced backfill to the lines and grades shown on the construction drawings.
- C. Work includes furnishing and installing geogrid soil reinforcement of the type, size, location and lengths designated on the construction drawings.

### 1.02 Related Sections

- A. Section 31 00 00 – Earthwork

### 1.03 Reference Documents

- A. American Society for Testing and Materials (ASTM)
  - 2. **AASHTO M 252** Corrugated Polyethylene Drainage Pipe
  - 3. **AASHTO M 288** Geotextile Specification for Highway Applications
- B. American Society for Testing and Materials (ASTM)
  - 1. **ASTM C140** Sampling and Testing Concrete Masonry Units
  - 2. **ASTM C1372** Specification for Dry-Cast Segmental Retaining Wall Units
  - 3. **ASTM D442** Particle Size Analysis of Soils
  - 4. **ASTM D698** Laboratory Compaction Characteristics of Soil – Standard Effort
  - 5. **ASTM D1556** Standard Test Method for Density and Unit Weight of Soil In Place by the Sand Cone Method
  - 6. **ASTM D1557** Laboratory Compaction Characteristics of Soil – Modified Effort
  - 7. **ASTM D2487** Standard Classification of Soils for Engineering Purposes (Unified Soil Classification System)
  - 8. **ASTM D2922** Standard Test Methods for Density of Soil and Soil-Aggregate in Place by Nuclear Methods (Shallow Depth)
  - 9. **ASTM D3034** Standard Specification for Type PSM Poly (Vinyl Chloride) (PVC) Sewer pipe and Fittings
  - 10. **ASTM D4318** Liquid Limit, Plastic Limit and Plasticity Index of Soils
  - 11. **ASTM D4475** Horizontal Shear Strength of Pultruded Reinforced Plastic Rods

- 12. **ASTM D4476** Flexural Properties of Fiber Reinforced Pultruded Plastic Rods
- 13. **ASTM D4595** Standard Test Method for Tensile Properties of Geotextiles by Wide-Width Strip Method
- 14. **ASTM D4873** Standard Guide for Identification, Storage and Handling of Geosynthetics
- 15. **ASTM D5262** Standard Test Method for Evaluating the Unconfined Tension Creep Behavior of Geosynthetics
- 16. **ASTM D5321** Standard Test Method for Determining the Coefficient of Soil and Geosynthetic or Geosynthetic and Geosynthetic Friction by the Direct Shear Method
- 17. **ASTM D5818** Standard Practice for Obtaining Samples of Geosynthetics from a Test Section for Assessment of Installation Damage
- 18. **ASTM D6637** Standard Test Method for Determining Tensile Properties of Geogrids by the Single or Multi-Rib Method
- 19. **ASTM D6638** Standard Test Method for Determining Connection Strength Between Geosynthetic Reinforcement and Segmental Concrete Units
- 20. **ASTM D6706** Standard Test Method for Measuring Geosynthetic Pullout Resistance in Soil
- 21. **ASTM D6916** Standard Test Method for Determining the Shear Strength Between Segmental Concrete Units
- C. National Concrete Masonry Association (NCMA)
  - 1. **NCMA SRWU-1** Test Method for Determining Connection Strength of SRW
  - 2. **NCMA SRWU-2** Test Method for Determining Shear Strength of SRW

### 1.04 Definitions

- A. Keystone Linear Unit – a dry-stacked concrete retaining wall unit machine made from Portland cement, water, aggregates, manufactured by a licensed manufacturer of Keystone.
- B. Structural Geogrid – a polymeric material formed by a regular network of connected tensile elements with apertures of sufficient size to allow interlocking with surrounding soil, rock or earth and function primarily as reinforcement.
- C. Drainage Fill – drainage aggregate that is placed immediately behind the Keystone concrete units.
- D. Reinforced Backfill – compacted soil that is placed within the reinforced soil volume as outlined on the plans.
- E. Retained Soil – the soil mass behind the reinforced backfill.
- F. Foundation Soil – the soil mass below the leveling pad and reinforced backfill.

- G. Leveling Pad – crushed stone, sand and gravel or unreinforced concrete material placed to provide a level surface for placement of the Keystone concrete units.
- H. Geosynthetic Reinforcement – polymeric material designed specifically for soil reinforcement.

---

### 1.05 Submittals and Certification

- A. Contractor shall submit a Manufacturer’s certification, prior to the start of work, that the retaining wall system components meet the requirements of this specification and the structure design.
- B. Contractor shall submit construction drawings and design calculations for the retaining wall system prepared and stamped by a Professional Engineer registered in the province of the project.

---

### 1.06 Quality Assurance

- A. Contractor shall submit a list of five (5) previously constructed projects of similar size and magnitude by the wall installer where a segmental retaining wall system has been constructed successfully. Contact names and phone numbers shall be listed for each project.
- B. Contractor shall provide evidence that the design engineer has a minimum of five years documented experience in the design of reinforced soil structures. The design engineer shall provide proof of current professional liability insurance with an aggregate coverage limit of not less than \$2,000,000.
- C. Owner shall/may provide quality assurance inspection and testing during earthwork and wall construction operations. Contractor shall provide all quality control testing and inspection not provided by the owner. Owner’s quality assurance program does not relieve the contractor of responsibility for quality control and wall performance.

---

### 1.07 Delivery Handling and Storage

- A. Contractor shall check all materials upon delivery to assure that the proper type, grade, color, and certification have been received.
- B. Contractor shall protect all materials from damage due to jobsite conditions and in accordance with manufacturer’s recommendations. Damaged materials shall not be incorporated into the work.

## PART 2: PRODUCTS

---

### 2.01 Keystone Concrete Retaining Wall Units

- A. Keystone Linear retaining wall units shall conform to the following architectural requirements.
  1. Face color - concrete gray, unless otherwise specified. The Owner may specify standard manufacturers’ color.
  2. Smooth Face finish – smooth face configuration. Other face finishes will not be allowed without written approval of Owner.
  3. Bond configuration - running with bonds located within 150mm of the midpoint in vertically adjacent units.
  4. Exposed surfaces of units shall be free of chips, cracks or other imperfections when viewed from a distance of 6 m under diffused lighting.

- B. Keystone concrete units shall conform to the requirements of ASTM C1372 - Standard Specifications for Segmental Retaining Wall Units.
- C. Keystone concrete units shall conform to the following structural and geometric requirements measured in accordance with ASTM C140 Sampling and Testing Concrete Masonry Units:
  1. Compressive strength:  $\geq 21$  MPa.
  2. Absorption:  $\leq 8\%$  for standard weight aggregates.
  3. Dimensional tolerances:  $\pm 3.2$  mm from nominal unit dimensions.
  4. Unit Size: 178 mm (H) x 1000 mm (W) x 350 mm (D) minimum.
- D. Keystone concrete units shall conform to the following constructability requirements:
  1. Vertical setback: 0 mm  $\pm$  per course (near vertical) or 25 mm + per course, per the design.
  2. Alignment and grid attachment mechanism - fiberglass pins, two to three per unit.
  3. Maximum horizontal gap between erected units shall be  $\leq 7$  mm.

---

### 2.02 Shear and Reinforcement Pin Connectors

- A. Shear and reinforcement pin connectors shall be 12.7 mm diameter thermoset isophthalic polyester resin pultruded fiberglass reinforcement rods to provide connection between vertically and horizontally adjacent units and geosynthetic reinforcement, with the following requirements:
  1. Flexural Strength in accordance with ASTM D4476: 882 MPa minimum.
  2. Short Beam Shear in accordance with ASTM D4475: 44 MPa minimum.
- B. Shear and reinforcement pin connectors shall be capable of holding the geogrid in the proper design position during grid pre-tensioning and backfilling.

---

### 2.03 Base Leveling Pad Material

- A. Material shall consist of a compacted crushed stone base, sand and gravel or unreinforced concrete, as shown on the construction drawings.

---

### 2.04 Drainage Fill

- A. Drainage fill shall consist of clean 25 mm minus crushed stone or crushed gravel meeting the following gradation tested in accordance with ASTM D-422:

| Sieve Size     | Percent Passing |
|----------------|-----------------|
| 25 mm          | 100             |
| 19 mm          | 75 - 100        |
| No. 4 (4.75mm) | 0 - 10          |
| No. 50 (300um) | 0 - 5           |

- B. Drainage fill shall be placed behind the units as indicated on the design drawings. Not less than 0.036 m<sup>3</sup> of drainage fill shall be used for each 0.093 m<sup>2</sup> of wall face unless otherwise specified.

---

## 2.05 Reinforced Backfill

- A. Reinforced backfill shall be free of debris and meet the following gradation tested in accordance with ASTM D-422:

| Sieve Size     | Percent Passing |
|----------------|-----------------|
| 38mm           | 100             |
| 19mm           | 75 - 100        |
| No. 40 (425um) | 0 - 60          |
| No. 200 (75um) | 0 - 35          |

Plasticity Index (PI) < 15 and Liquid Limit < 40, per ASTM D4318

- B. The maximum aggregate size shall be limited to 19 mm unless installation damage tests have been performed to evaluate potential strength reductions to the geogrid design due to increased installation damage during construction.
- C. Material can be site-excavated soils where the above requirements can be met. Soils not meeting the above criteria, including highly plastic clays and organic soils, shall not be used in the backfill or reinforced backfill soil mass.
- D. Contractor shall submit reinforced fill sample and laboratory test results to the Architect/Engineer for approval, prior to the use of any proposed reinforced backfill material.

---

## 2.06 Geogrid Soil Reinforcement

- A. Geosynthetic reinforcement shall consist of geogrids manufactured for soil reinforcement applications and shall be manufactured from high tenacity polyester yarn or high-density polyethylene. Polyester geogrid shall be made from high tenacity polyester filament yarn with a molecular weight exceeded 25,000 g/m and with a carboxyl end group value less than 30. Polyester geogrid shall be coated with an impregnated PVC coating that resists peeling, cracking and stripping.
- B.  $T_a$  – Long Term Allowable Tensile Design Load.  $T_a$  of the geogrid material shall be determined as follows:  $T_a = T_{ult}/(RF_{cr} * RF_d * RF_{id} * FS)$ .  $T_a$  shall be evaluated based on a 75 year design life.
1.  $T_{ult}$  – Short Term Ultimate Tensile Strength.  $T_{ult}$  shall be determined in accordance with ASTM D4595 or ASTM D6637.  $T_{ult}$  is based on the minimum average roll values (MARV).
  2.  $RF_{cr}$  – Reduction Factor for Long Term Tension Creep.  $RF_{cr}$  shall be determined from 10,000 hour creep testing performed in accordance with ASTM D5262.  $RF_{cr} = 1.45$  minimum.
  3.  $RF_d$  – Reduction Factor for Durability.  $RF_d$  shall be determined from polymer specific durability testing covering the range of expected soil environments.  $RF_d = 1.10$  minimum.
  4.  $RF_{id}$  – Reduction Factor for Installation Damage.  $RF_{id}$  shall be determined from product specific construction damage testing performed in accordance with ASTM D5818. Test results shall be provided for each product to be used with project specific or more severe soil types.  $RF_{id} = 1.05$  minimum.
  5.  $FS$  – Overall Design Factor of Safety.  $FS$  shall be 1.5 unless noted for the maximum allowable working stress calculation.
- C. The maximum design tensile load of the geogrid shall not exceed the laboratory tested ultimate strength of the geogrid/facing unit connection divided by a factor of safety of 1.5. The connection strength testing and computation procedures shall be in accordance with ASTM D6638 Connection Strength between Geosynthetic Reinforcement and Segmental Concrete Units or NCMA SRWU-1.

- D.  $C_i$  – Coefficient of Soil Interaction.  $C_i$  values shall be determined per ASTM D6706 at a maximum 19 mm displacement.
- E. The geogrid manufacturer shall have a Manufacturing Quality Control program that includes QC testing by an independent laboratory. The QC testing shall include Tensile Strength testing, Melt Flow Index testing for HDPE geogrids and Molecular Weight testing for polyester geogrids.

---

## 2.07 Drainage Pipe

- A. If required, drainage pipe shall be perforated or slotted PVC pipe manufactured in accordance with ASTM D3034 or corrugated HDPE pipe manufactured in accordance with AASHTO M252 with a minimum diameter of 100 mm.

---

## 2.08 Geotextile Filter Fabric

- A. When required, geotextile filter fabric shall be a needle-punched nonwoven fabric that meets the requirements of AASHTO M288.

---

## PART 3: EXECUTION

---

### 3.01 Excavation

- A. Contractor shall excavate to the lines and grades shown on the construction drawings. The Owner or Contractors QA/QC representative shall inspect the excavation and test the foundation soils and approve prior to placement of the leveling pad material or fill soils. Any over-excavation required to remove unsuitable soils shall be oversized from the front of the leveling pad and back of the geogrid reinforcement.
- B. Over-excavation and replacement of unsuitable soils and replacement with approved compacted fill will be compensated as agreed upon with the Owner.

---

### 3.02 Base Leveling Pad

- A. Leveling pad material shall be placed to the lines and grades shown on the construction drawings to a minimum thickness of 150 mm and extend laterally a minimum of 150 mm in front and behind the Keystone wall unit.
- B. Soil leveling pad materials shall be compacted to a minimum of 95% of Standard Proctor density per ASTM D697 or 92% Modified Proctor density per ASTM D1557.
- C. Leveling pad shall be prepared to insure full contact with the base surface of the concrete units.

---

### 3.03 Keystone Unit Installation

- A. First course of units shall be placed on the leveling pad at the appropriate line and grade. Alignment and level shall be checked in all directions and ensure that all units are in full contact with the base and properly seated.
- B. Place the front of the units side-by-side. Do not leave gaps between adjacent units. Layout of corners shall be in accordance with manufacturer's recommendations.
- C. Install shear/connecting pins per manufacturer's recommendations.
- D. Place and compact drainage fill behind wall units. Place and compact reinforced backfill soil behind drainage fill.
- E. Maximum stacked vertical height of wall units, prior to drainage fill and backfill placement and compaction, shall not exceed three courses.



---

### 3.04 Structural Geogrid Installation

- A. Geogrid shall be installed with the highest strength direction perpendicular to the wall alignment.
- B. Geogrid reinforcement shall be placed at the strengths, lengths and elevations shown on the construction drawings, or as directed by the engineer.
- C. The geogrid shall be laid horizontally on compacted backfill and attached to the Keystone wall unit pins and within 25 mm of the face of the units. Place the next course of Keystone units over the geogrid. The geogrid shall be pulled taut and anchored prior to backfill placement on the geogrid.
- D. Geogrid reinforcements shall be continuous throughout their embedment lengths and placed side-by-side to provide 100% coverage at each level. Spliced connections between shorter pieces of geogrid or gaps greater than 50 mm between adjacent pieces of geogrid are not permitted.

---

### 3.05 Reinforced Backfill Placement

- A. Reinforced backfill shall be placed, spread and compacted in such a manner that minimizes the development of slack in the geogrid and installation damage to the geogrid.
- B. Reinforced backfill shall be placed and compacted in lifts not to exceed 150 mm where hand operated compaction equipment is used, or 200 to 250 mm where heavy compaction equipment is used. Lift thickness shall be decreased to achieve the required density, as needed.
- C. Reinforced backfill shall be compacted to a minimum of 95% of Standard Proctor density per ASTM D697 or 92% Modified Proctor density per ASTM D1557. The moisture content of the reinforced backfill material during compaction shall be uniformly distributed throughout each layer and shall be dry of optimum by 0 to 3 percentage points of moisture.
- D. Only hand operated compaction equipment shall be allowed within 1 meter from the back of the Keystone concrete units.
- E. Tracked construction equipment shall not be operated directly upon the geogrid reinforcement. A minimum fill thickness of 150 mm is required prior to operation of tracked vehicles over the geogrid. Tracked vehicle turning should be kept to a minimum to prevent tracks from displacing the fill and damaging or displacing the Keystone units or geogrid.
- F. Rubber tired equipment may pass over geogrid reinforcement at slow speeds, less than 10 MPH. Sudden braking and turning shall be avoided.
- G. At the end of each day's operation, the Contractor shall slope the last lift of reinforced backfill away from the wall units to direct runoff away from the wall face. The Contractor shall not allow surface runoff from adjacent areas to enter the wall construction site.

---

### 3.06 Cap Installation

- A. Prior to placement of the cap units, the upper surface of the top course of wall units shall be cleaned of soil and any other material.
- B. Cap units shall be adequately glued to the underlying wall units with an all-weather exterior construction adhesive.

---

### 3.07 As-built Construction Tolerances

- A. Vertical alignment:  $\pm 40$  mm over any 3 m distance.
- B. Wall batter: within 2 degrees of design batter. Overall wall batter shall be  $\geq 0$  degrees.
- C. Horizontal alignment:  $\pm 40$  mm over any 3 m distance.
- D. Corners and curves:  $\pm 300$  mm to theoretical location.
- E. Maximum horizontal gap between erected units shall be  $\leq 7$  mm.

---

### 3.08 Field Quality Control

- A. Quality Assurance – The owner shall/may engage inspection and testing services, including independent laboratories, to provide quality assurance and testing services during construction. This does not relieve the Contractor from securing the necessary construction quality control testing.
- B. Quality assurance should include foundation soil inspection and testing and verification of the geotechnical design parameters and verification that the contractor's quality control testing is adequate as a minimum. Quality assurance shall also include observation of the construction for general compliance with the design drawings and project specifications. Quality assurance is usually best performed by the site geotechnical engineer.
- C. Quality Control – The Contractor shall engage independent inspection and testing services to perform the minimum quality control testing described in the retaining wall design plans and specifications. Only qualified and experienced technicians and engineers shall perform quality control testing and inspection services.
- D. Quality control testing shall include soil and backfill testing to verify soil types and strengths, compaction and moisture conditions and verification that the retaining wall is being constructed in accordance with the design plans and specifications.

---

## PART 4: MEASUREMENTS

---

### 4.01 Product Packaging

- A. Keystone Linear wall product is packaged and shipped by the pallet
- B. 12 individual blocks are included per pallet

---

### 4.02 Product Measurement

- A. Standard: 178x1000x350mm
- B. Coping: 178x1000x350mm