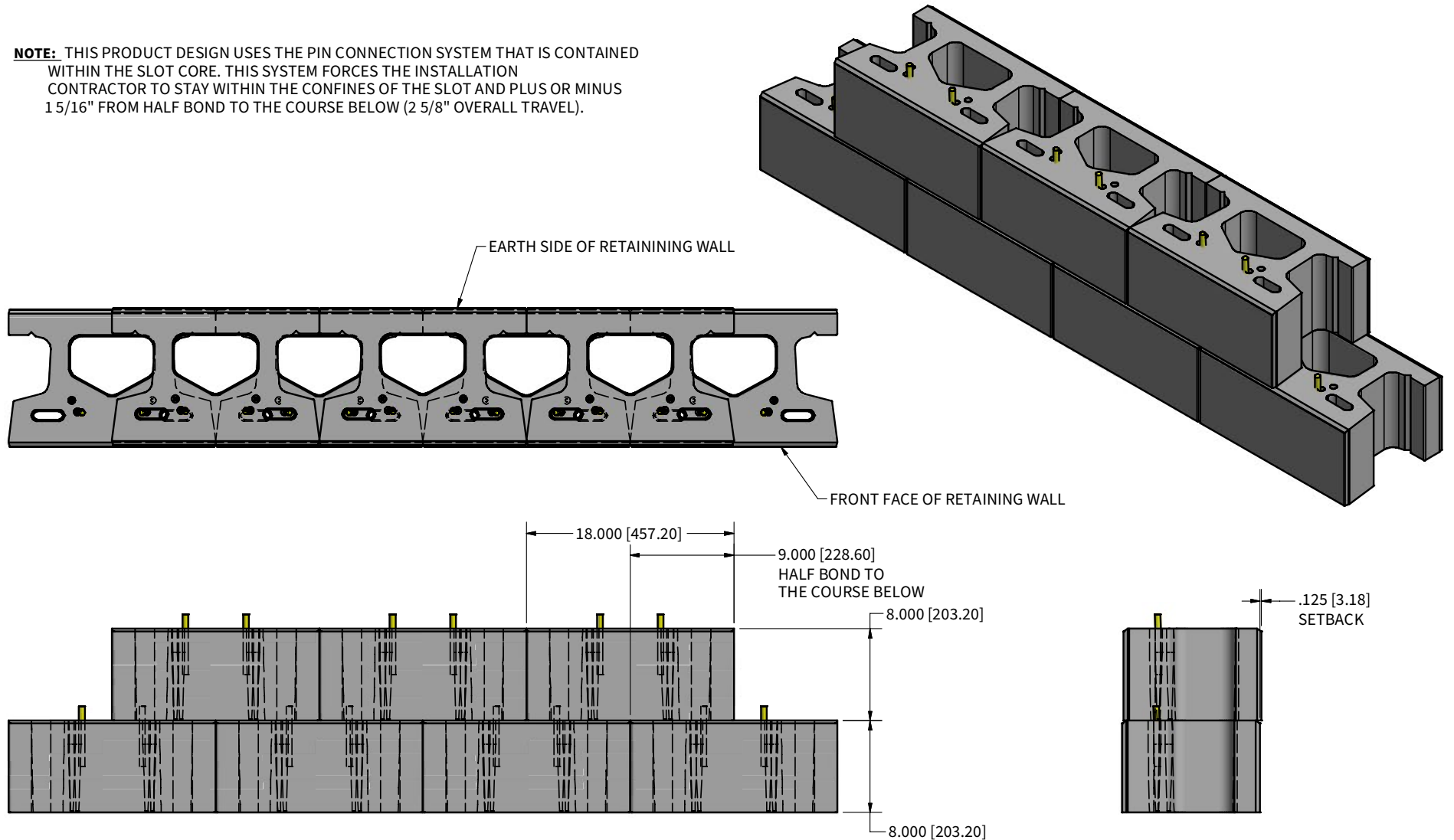


KEYSTONE COMPAC® SMOOTH STONE

Retaining Straight Wall
Installation Shown in
Near Vertical Pin Position

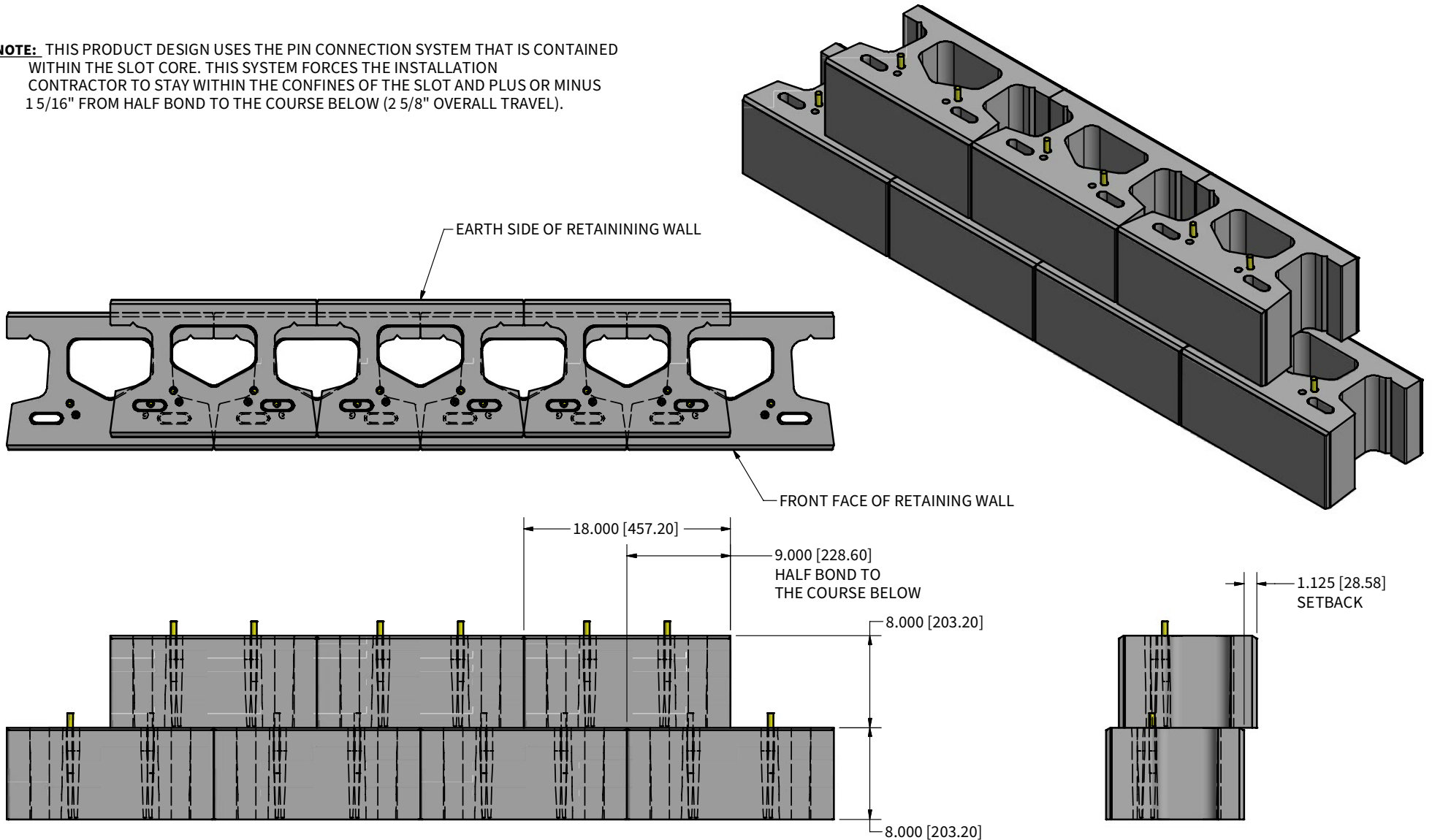
NOTE: THIS PRODUCT DESIGN USES THE PIN CONNECTION SYSTEM THAT IS CONTAINED WITHIN THE SLOT CORE. THIS SYSTEM FORCES THE INSTALLATION CONTRACTOR TO STAY WITHIN THE CONFINES OF THE SLOT AND PLUS OR MINUS 1.5/16" FROM HALF BOND TO THE COURSE BELOW (2 5/8" OVERALL TRAVEL).



KEYSTONE COMPAC® SMOOTH STONE

Retaining Straight Wall
Installation Shown in Full
Setback Pin Position

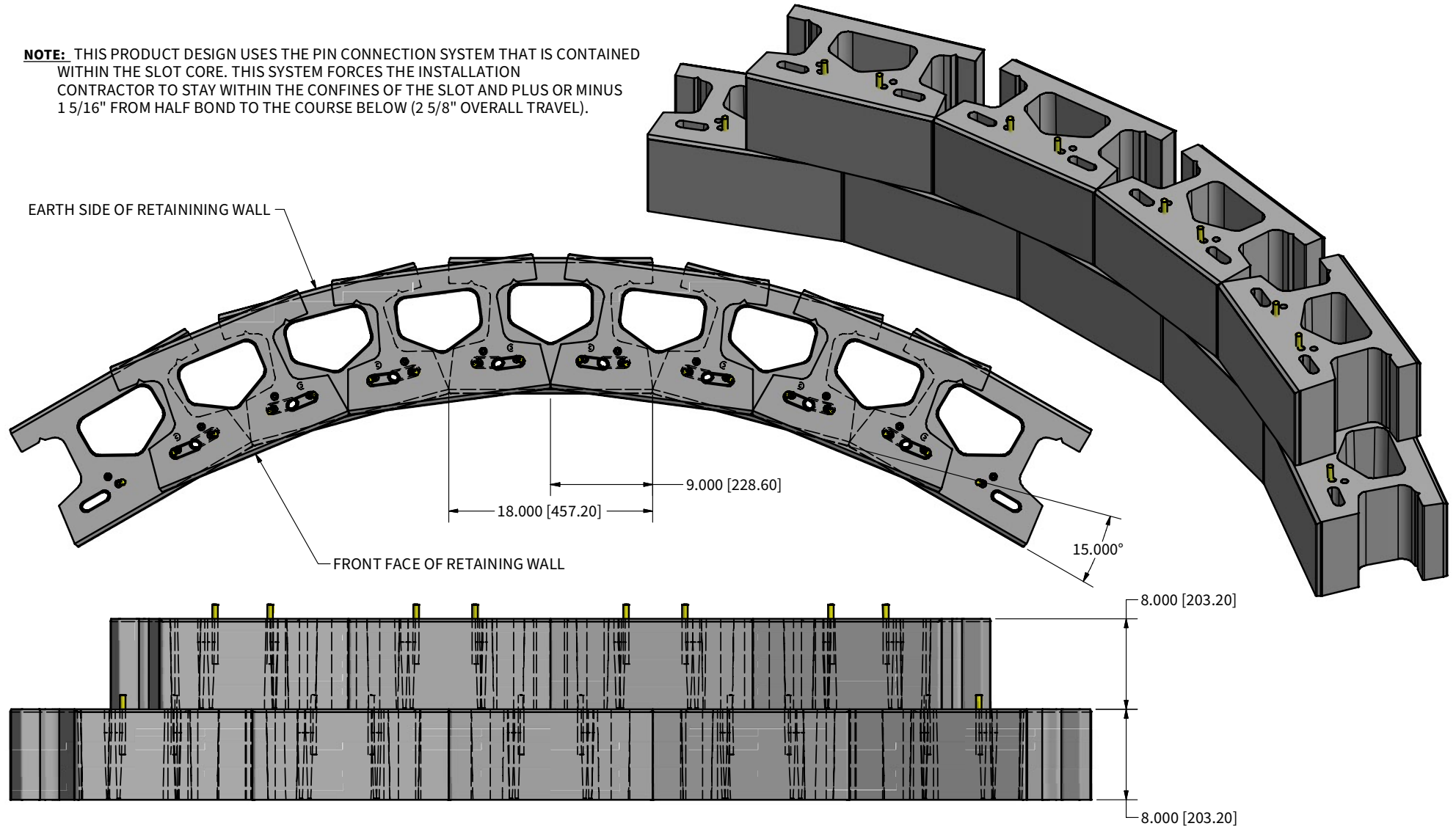
NOTE: THIS PRODUCT DESIGN USES THE PIN CONNECTION SYSTEM THAT IS CONTAINED WITHIN THE SLOT CORE. THIS SYSTEM FORCES THE INSTALLATION CONTRACTOR TO STAY WITHIN THE CONFINES OF THE SLOT AND PLUS OR MINUS 1 5/16" FROM HALF BOND TO THE COURSE BELOW (2 5/8" OVERALL TRAVEL).



KEYSTONE COMPAC® SMOOTH STONE

Retaining Interior Radius/Curved Wall
Installation Shown in
Near Setback Pin Position

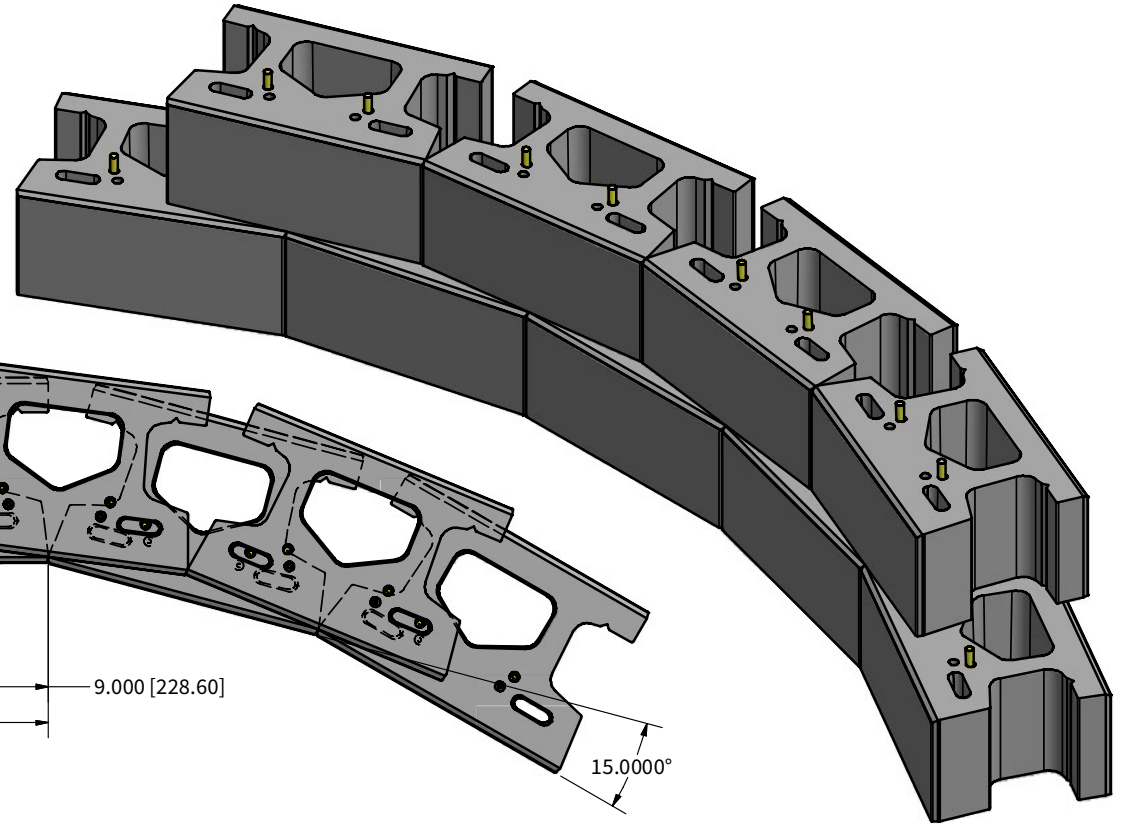
NOTE: THIS PRODUCT DESIGN USES THE PIN CONNECTION SYSTEM THAT IS CONTAINED WITHIN THE SLOT CORE. THIS SYSTEM FORCES THE INSTALLATION CONTRACTOR TO STAY WITHIN THE CONFINES OF THE SLOT AND PLUS OR MINUS 1 5/16" FROM HALF BOND TO THE COURSE BELOW (2 5/8" OVERALL TRAVEL).



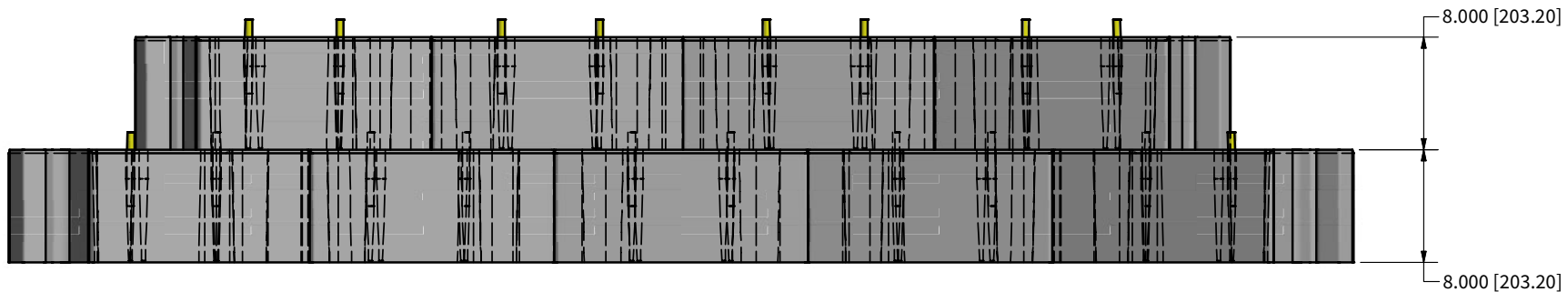
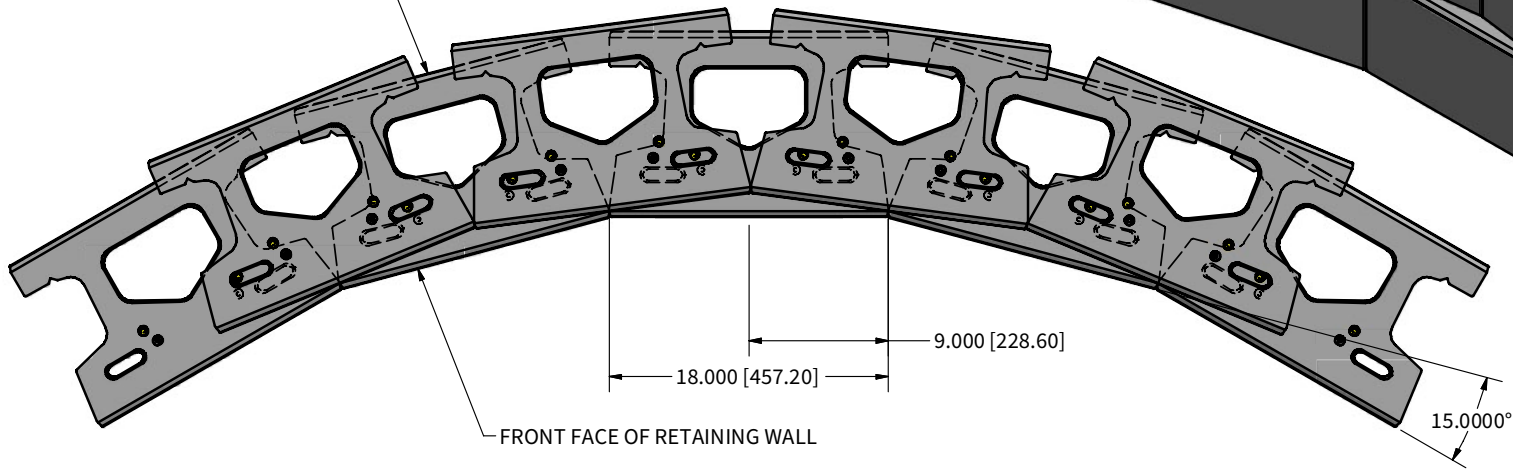
KEYSTONE COMPAC® SMOOTH STONE

Retaining Interior Radius/Curved Wall
Installation Shown in
Full Setback Position

NOTE: THIS PRODUCT DESIGN USES THE PIN CONNECTION SYSTEM THAT IS CONTAINED WITHIN THE SLOT CORE. THIS SYSTEM FORCES THE INSTALLATION CONTRACTOR TO STAY WITHIN THE CONFINES OF THE SLOT AND PLUS OR MINUS 1 5/16" FROM HALF BOND TO THE COURSE BELOW (2 5/8" OVERALL TRAVEL).



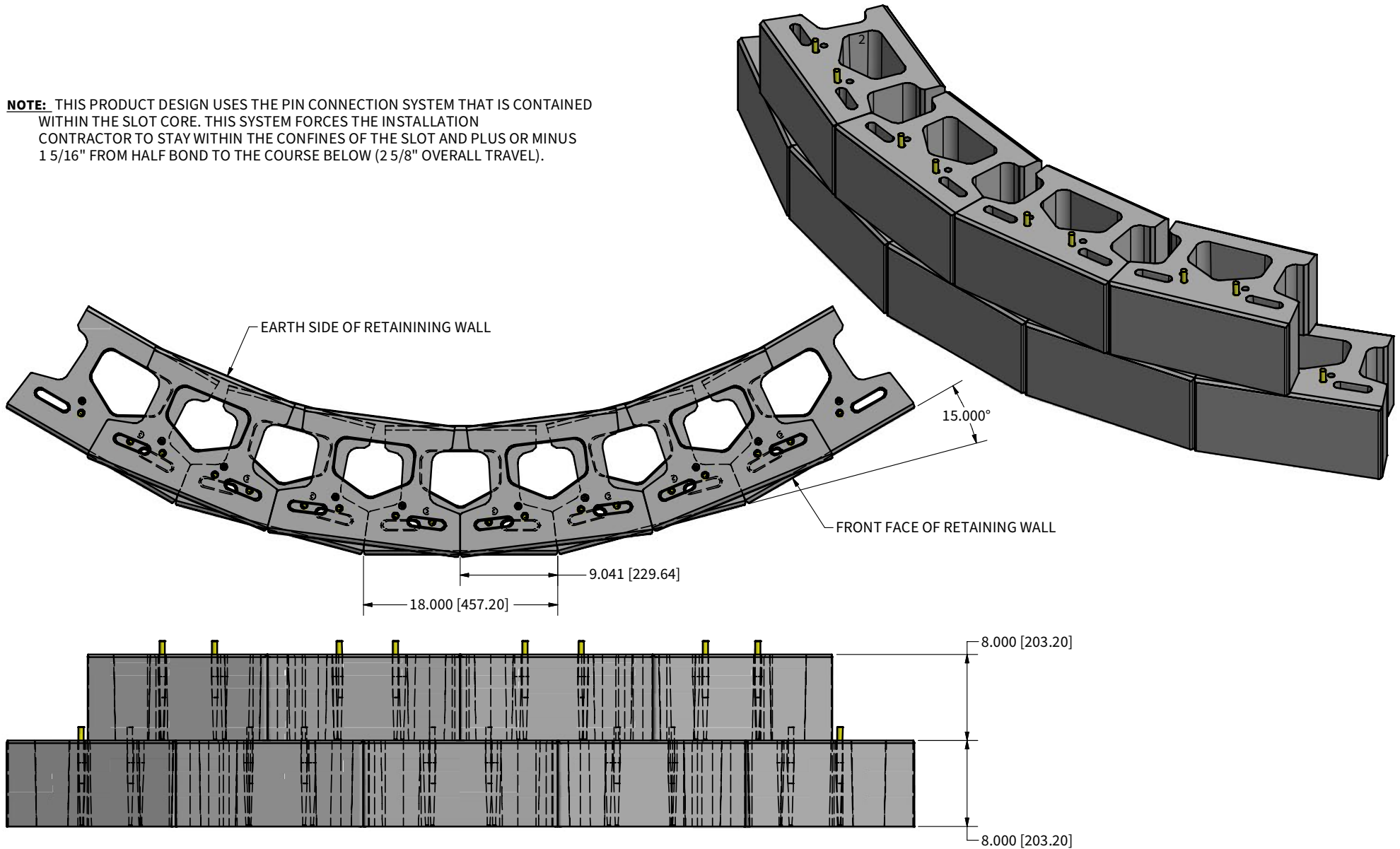
EARTH SIDE OF RETAINING WALL



KEYSTONE COMPAC® SMOOTH STONE

Retaining Exterior Radius/Curved Wall
Installation Shown In
Near Setback Pin Position

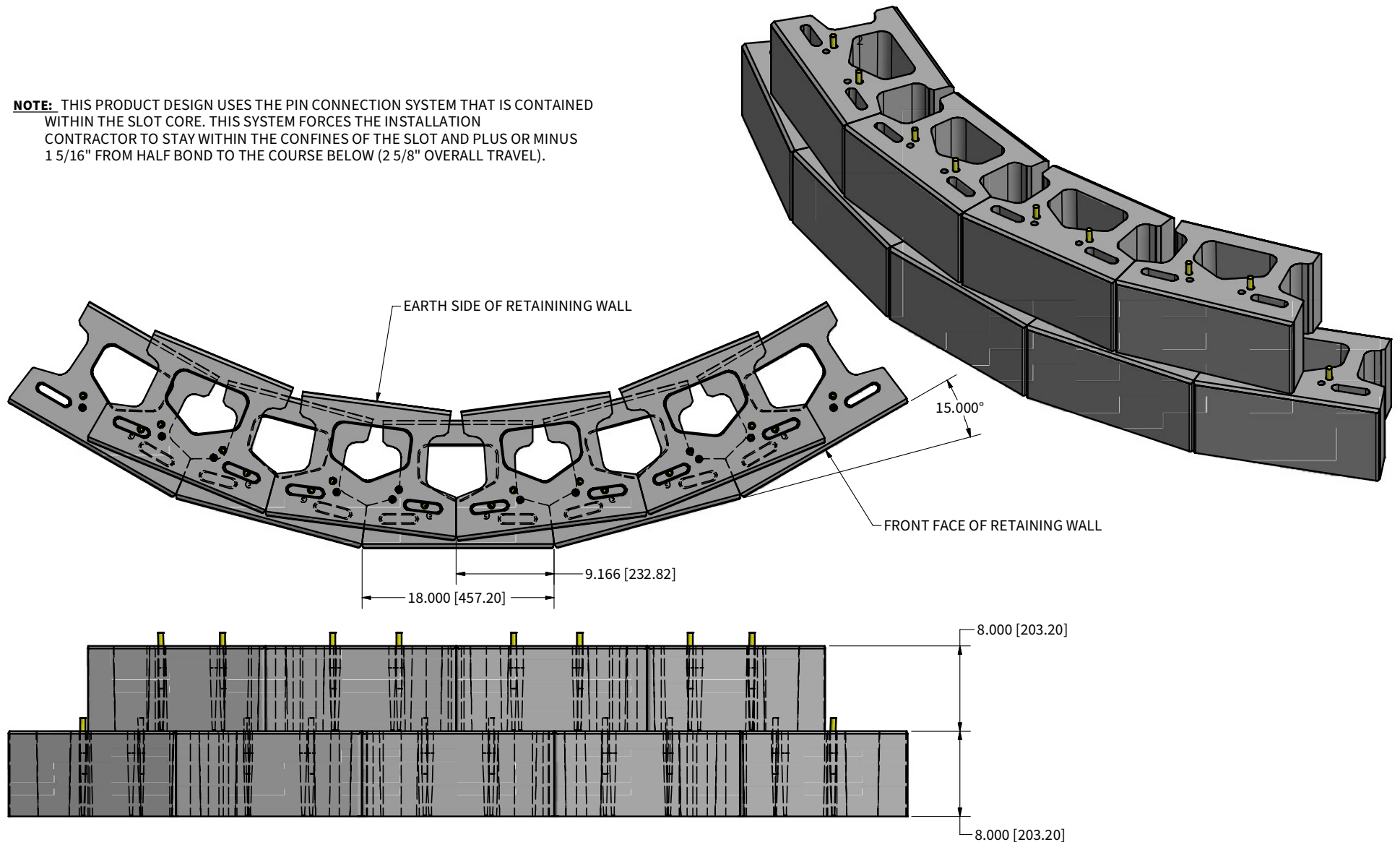
NOTE: THIS PRODUCT DESIGN USES THE PIN CONNECTION SYSTEM THAT IS CONTAINED WITHIN THE SLOT CORE. THIS SYSTEM FORCES THE INSTALLATION CONTRACTOR TO STAY WITHIN THE CONFINES OF THE SLOT AND PLUS OR MINUS 1 5/16" FROM HALF BOND TO THE COURSE BELOW (2 5/8" OVERALL TRAVEL).



KEYSTONE COMPAC® SMOOTH STONE

Retaining Exterior Radius/Curved Wall
Installation Shown In
Full Setback Pin Position

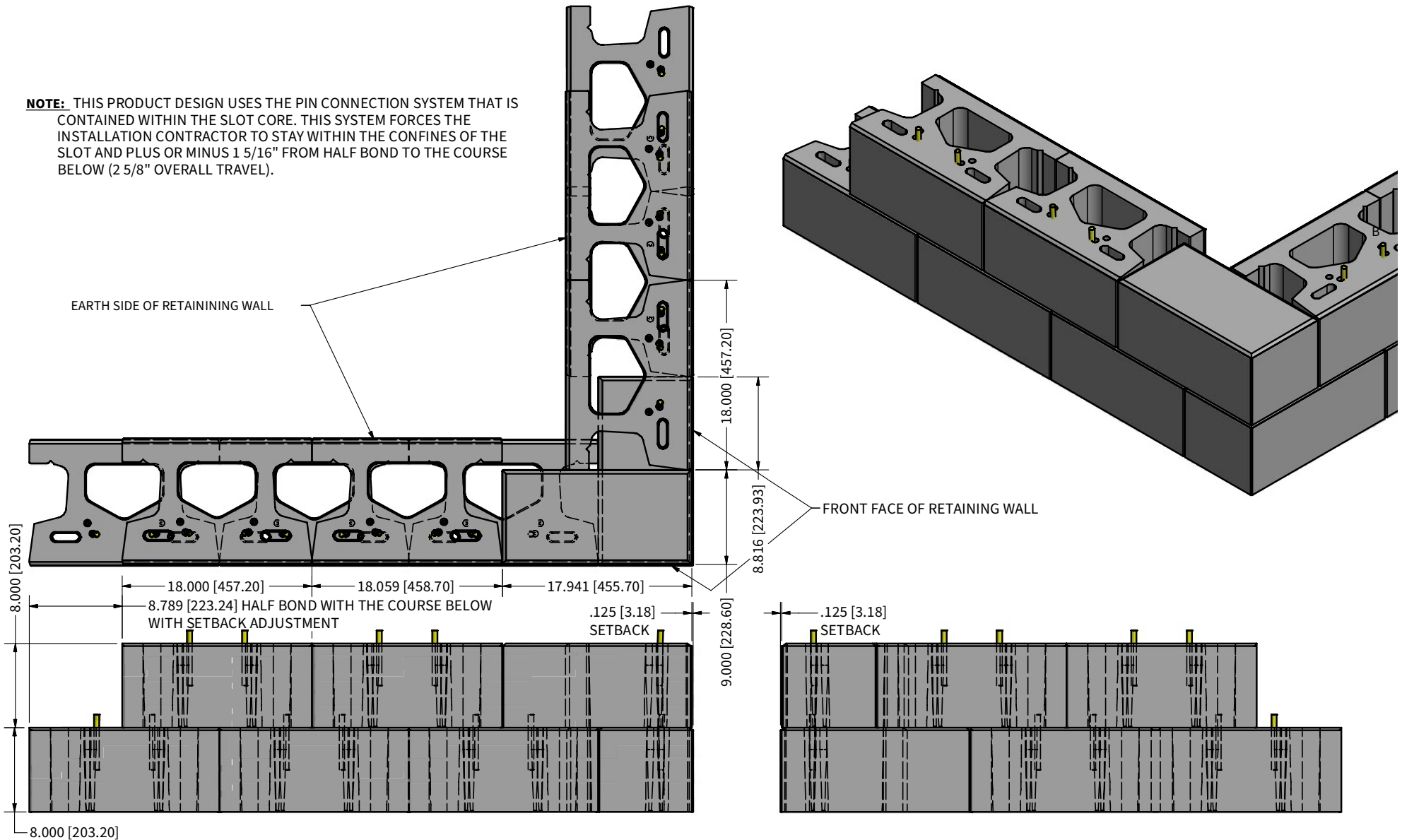
NOTE: THIS PRODUCT DESIGN USES THE PIN CONNECTION SYSTEM THAT IS CONTAINED WITHIN THE SLOT CORE. THIS SYSTEM FORCES THE INSTALLATION CONTRACTOR TO STAY WITHIN THE CONFINES OF THE SLOT AND PLUS OR MINUS 1 5/16" FROM HALF BOND TO THE COURSE BELOW (2 5/8" OVERALL TRAVEL).



KEYSTONE COMPAC® SMOOTH STONE

Retaining Exterior 90° Corner Wall
Installation Shown in
Near Setback Pin Position

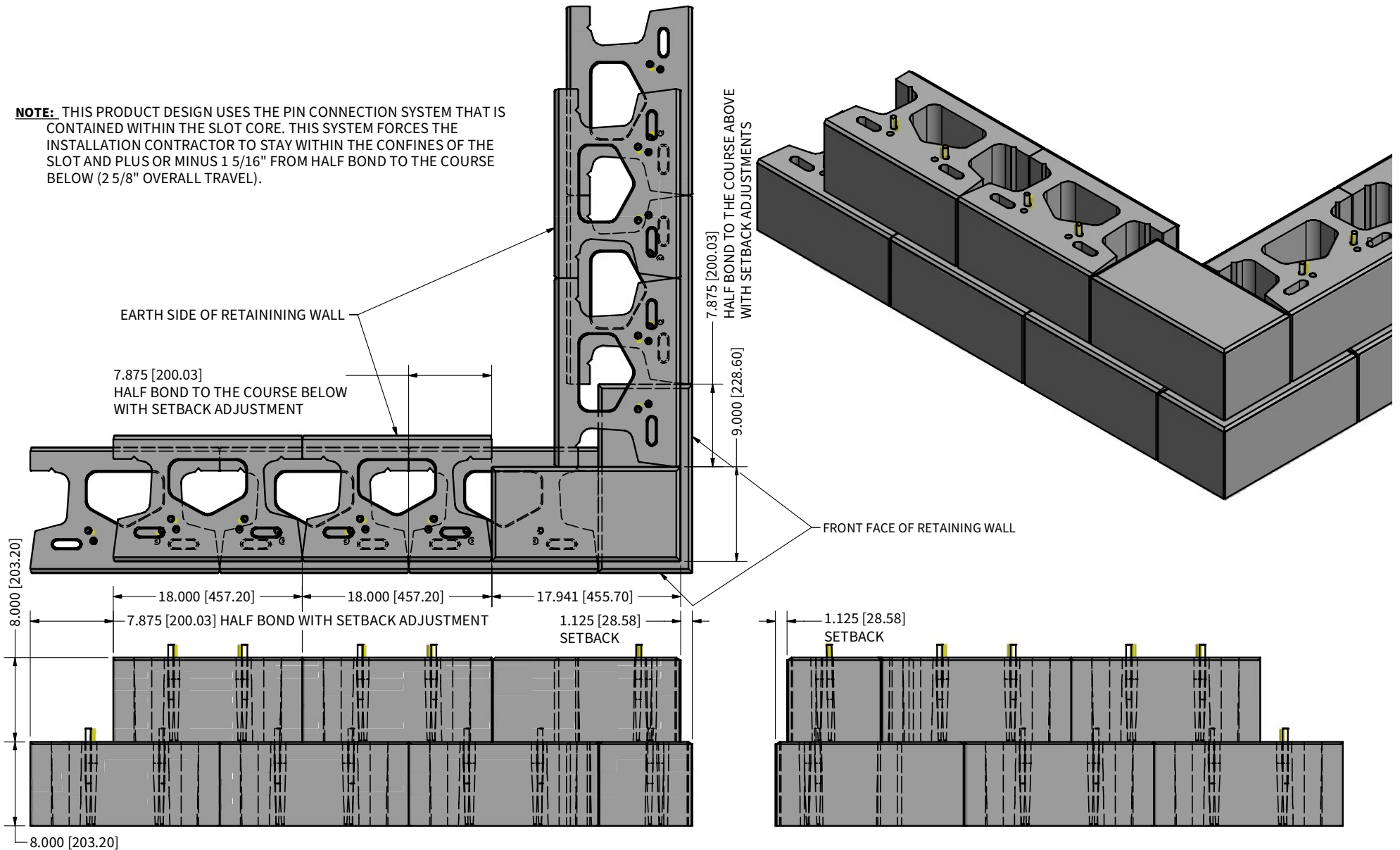
NOTE: THIS PRODUCT DESIGN USES THE PIN CONNECTION SYSTEM THAT IS CONTAINED WITHIN THE SLOT CORE. THIS SYSTEM FORCES THE INSTALLATION CONTRACTOR TO STAY WITHIN THE CONFINES OF THE SLOT AND PLUS OR MINUS 1 5/16" FROM HALF BOND TO THE COURSE BELOW (2 5/8" OVERALL TRAVEL).



KEYSTONE COMPAC® SMOOTH STONE

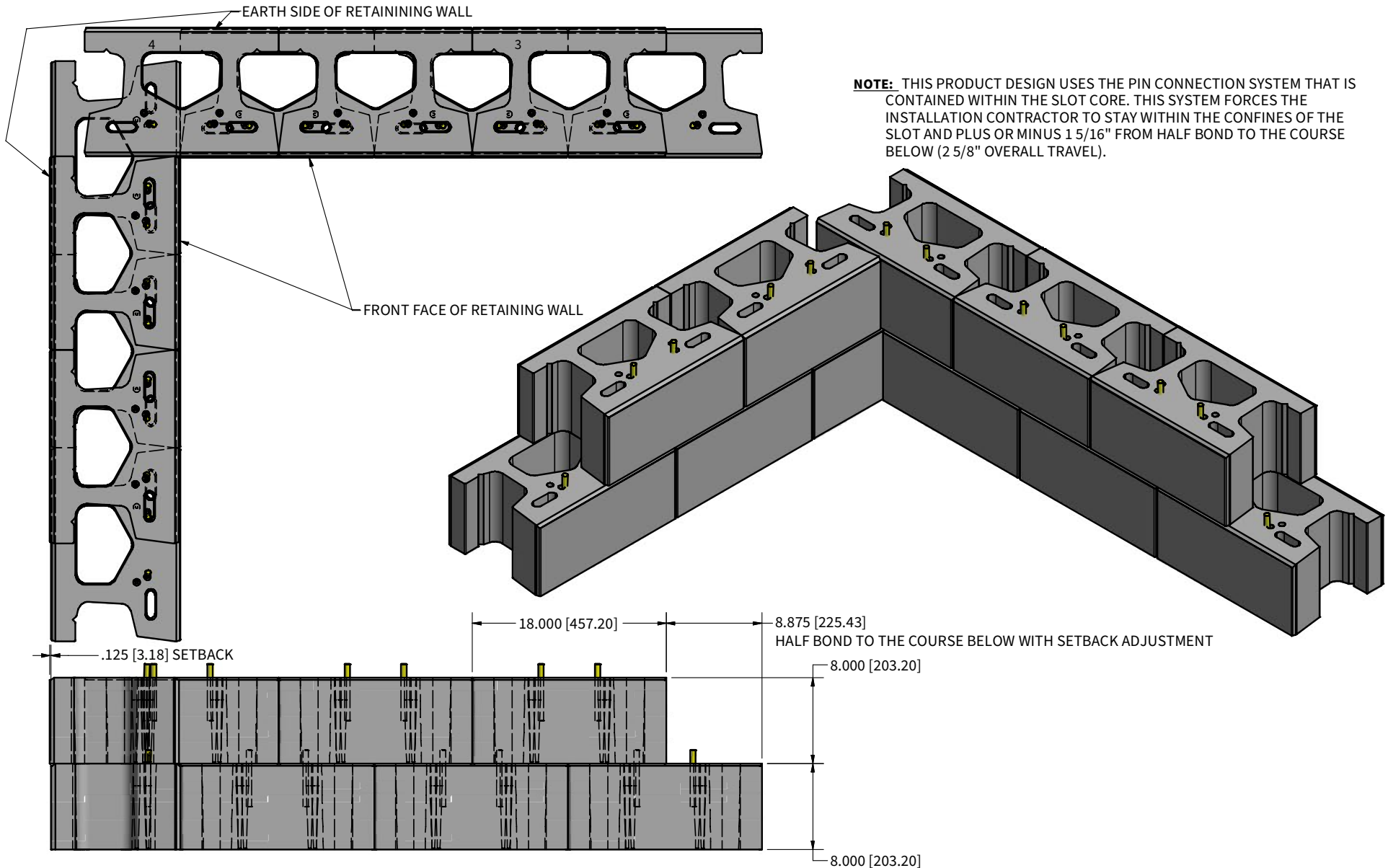
Retaining Exterior 90° Wall
Installation Shown in
Full Setback Pin Position

NOTE: THIS PRODUCT DESIGN USES THE PIN CONNECTION SYSTEM THAT IS CONTAINED WITHIN THE SLOT CORE. THIS SYSTEM FORCES THE INSTALLATION CONTRACTOR TO STAY WITHIN THE CONFINES OF THE SLOT AND PLUS OR MINUS 1 5/16" FROM HALF BOND TO THE COURSE BELOW (2 5/8" OVERALL TRAVEL).



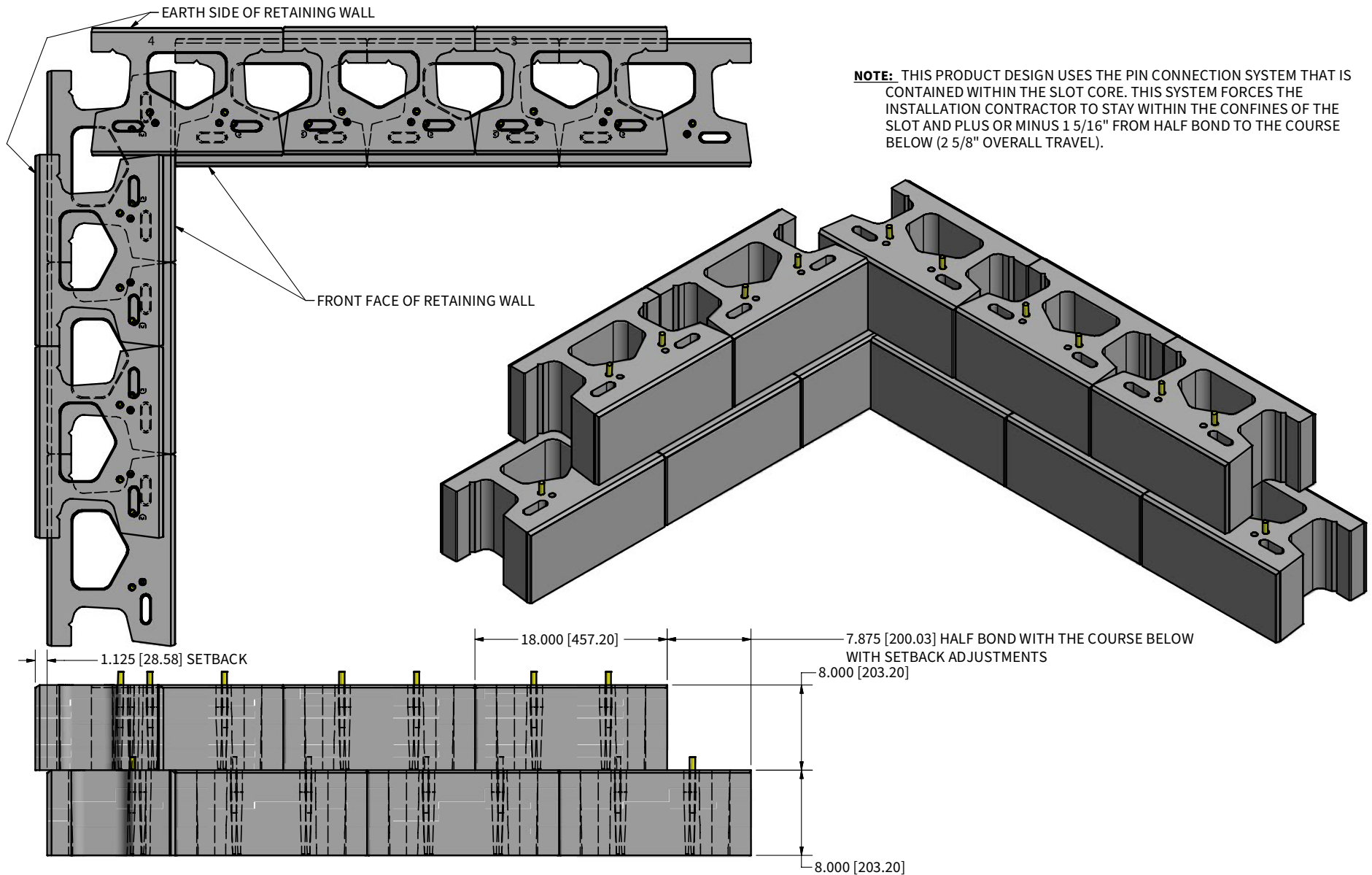
KEYSTONE COMPAC® SMOOTH STONE

Retaining Exterior 90° Corner Wall
Installation Shown in
Near Setback Pin Position



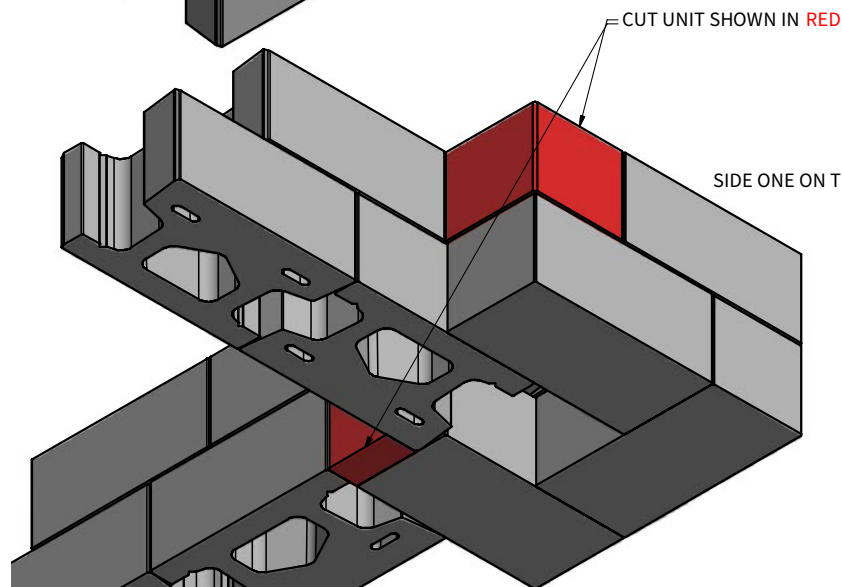
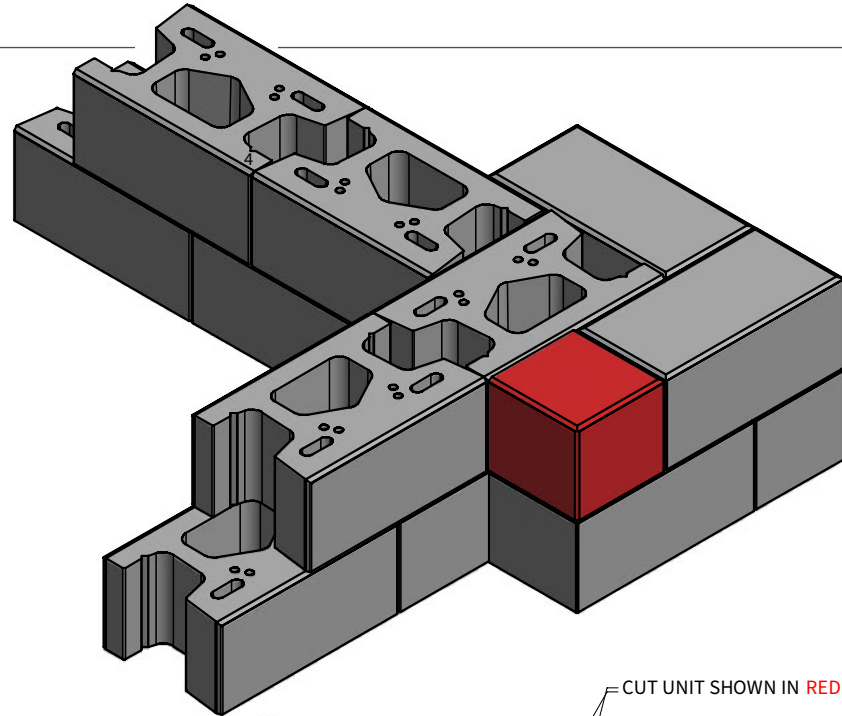
KEYSTONE COMPAC® SMOOTH STONE

Retaining Exterior 90° Corner Wall
Installation Shown in
Full Setback Pin Position



KEYSTONE COMPAC® SMOOTH STONE

Freestanding Straight Wall
With 90° Degree Corner Wall
Installation



SIDE TWO ON THE FREE STANDING WALL

USE REBAR AND CONCRETE FILL IN THE CORE OPENING,
AND TIE INTO A POURED CONCRETE FOOTING.
**APPROVAL BY AN ENGINEER IS REQUIRED
FOR EACH APPLICATION.**

ALTERNATE EVERY OTHER BLOCK IN ORDER TO EVENLY
DISTRIBUTE THE FACE WEIGHT ON THE WALL TO THE
FRONT FACE TO THE BACK FACE OF THE WALL.

