

barkman™

Spaces



Contents

2 Why Barkman



10 Spaces



- 10 Driveways
- 14 Patios
- 20 Paths
- 24 Pool Decks
- 28 Grand Walls & Steps
- 34 Garden Walls
- 38 Landscape Kits
- 44 Small Spaces

46 Pavers



65 Slabs



73 Walls & Steps



94 Finishing Touches



98 Landscape Kits



102 Important Information

104 Basic Paver and Slab Installation

108 Basic Wall Installation

109 Our Locations

BUILT FROM WITHIN

Barkman forges into the future
under a new generation of leadership

In 1948, my grandfather, Peter Barkman, alongside his two brothers, established a small hardware store in the community of Steinbach, Manitoba. While initially focused on serving the community through hardware offerings and plumbing and heating services, including poured-in-place concrete septic tanks, the brothers saw an opportunity for innovation. After countless hours of planning and research, in 1952 the brothers introduced a groundbreaking precast concrete septic tank that revolutionized the production and installation process and kickstarted their journey into precast concrete manufacturing.

Recognizing the many benefits of precast concrete, the company swiftly expanded its portfolio to include precast steps and went on to pioneer the introduction of segmental concrete pavers to North America. Today, the spirit of innovation remains deeply ingrained in our corporate

culture, driving us to continually refine our products, processes, and capabilities. Over the span of 77 years, this commitment to innovation has been the cornerstone of our growth as a Canadian family-owned business. This, paired with our goal to serve communities across Western Canada through quality products and exceptional customer service, has propelled us far beyond our modest beginnings to the position we proudly hold today.

Now, as we enter the third generation of family leadership, I am confident that we are exceptionally positioned to uphold our commitment to serving you through innovative concrete solutions.

Scott A. Barkman



An aerial photograph of a luxurious backyard. A large, irregularly shaped swimming pool with a light blue interior is the central feature. It is surrounded by a wide, light-colored stone patio. The patio is interspersed with several landscaped garden beds containing various plants, including yellow hydrangeas and green shrubs. A modern house with large glass windows and a wooden deck is visible in the background. The entire scene is set against a backdrop of dense green trees.

Crafting pathways of possibility from vision to reality.

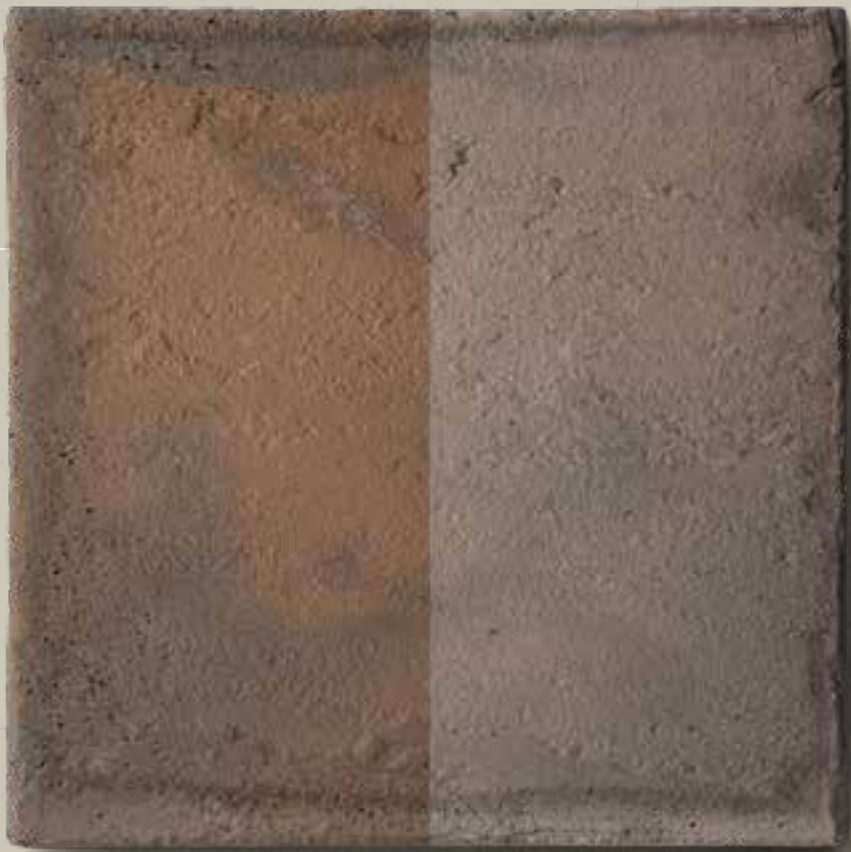
For over 75 years, Barkman has been fully committed to product quality and customer satisfaction. We use the highest-quality materials and implement rigorous quality control measures throughout our manufacturing process, consistently delivering a product that is a true industry leader.

DURABILITY

Our true colours shine through,
year after year after year.

Vibrant today, stunning
tomorrow: we use only the
highest-grade, most colour-
fast pigments on the market

We believe that our products should
not only elevate your outdoor living
space but also maintain their brilliance,
season after season. Though external
contaminants can often mute the colour
of a paver, the colour can be revived via
proper cleaning.



WARRANTY

Like our products,
our warranty is
built to last



It's easy to talk about quality, but backing it up
is another matter. Our warranty is as solid as
our products, which means you are covered by
a transferable lifetime warranty, where we will
replace or repair, without charge, any defective
product installed and maintained to our
guidelines under normal use.

To read more about
our warranty,
scan here:



SUPPORT

Industry-leading customer service, long after the dust has settled.

Our exemplary product support provides assurance, clarity and peace-of-mind at every stage

We believe that outstanding product support is just as important as the product itself. That's why we're dedicated to providing a level of service that truly sets us apart. It starts with simple touches like customer calls being answered by a real person. When issues arise, we're happy to meet our customers on-site to address any potential warranty concerns. Even if a product doesn't qualify for a warranty claim, we eagerly work with customers to resolve issues to the highest level of satisfaction.



QUALITY CONTROL

Holding ourselves— and our products— to a higher standard.



We employ stringent quality-control measures that ensure remarkable consistency across our full product range

We pride ourselves on quality. Our products are manufactured to tolerances and specifications that go beyond industry requirements. This commitment to quality not only enhances the aesthetic appeal of your project, but also assures durability and long-term performance.



TEXTURE

Textures as nuanced as your tastes

Texture is an integral part of nature, and should be a key consideration in creating your outdoor space. Whether you're looking to create a striking contrast or adopt a more unified approach, our palette of unique textures will ensure a welcome complement to your space.

COLOUR

Bold colour options, in service of bold imaginations

From rich creams and pleasing neutrals to various shades of greys and vibrant hues, Barkman offers a wide selection of colours to suit any outdoor space. Unlocking limitless possibilities, our standard colors are available for special order across multiple product sizes and styles, ensuring your space becomes uniquely exceptional.

DESIGN

SIZE

An array of sizes and shapes, offering infinite design potential

Scale and proportion are critical design principles, and cannot be overlooked when creating an outdoor living space. The possibilities are endless, and our array of sizes and shapes make it possible to create the perfect size relationship to suit your space.

ACCESSORIES

Our stamp of quality meets your personal touch

Barkman fire pits, fireplaces and pizza oven and allow you to tailor your outdoor space to suit the exact needs of your lifestyle. Our user-friendly landscape kits offer endless opportunities to make your outdoor space truly feel like home.

Driveways

A big first impression is the only way to roll

Your driveway creates a vital first impression of your home, setting the aesthetic tone for the rest of your property. While exceptional design is critical, our pavers are also engineered to easily withstand the rigours of automotive traffic and Canada's extreme climate fluctuations.



Actual colours may vary per region and production facility.



DESIGN TIP: Interlock for stability

An interlocking design can create additional strength to support a visually compelling style.

- ◀ Roman Pavers (page 49)
- ⚡ Broadway 100mm Pavers (page 59)
- Broadway Planks 100mm Pavers (page 60)
- ⬆ Navarro Pavers (page 58)



- ▲ Broadway 100mm Pavers (page 59)
- ▶ Broadway 65mm Pavers (page 52)
- ▶▶ Roman Pavers (page 49)



Watch your weight:

For driveway applications, be sure to choose a paver that is rated for vehicular use.

*Small 65mm paver sizes can be used for light vehicular traffic executions as long as proper installation and the correct base is used.



Patios

Take it up a level, at every level

A well-designed patio is a tribute to the joy of outdoor living. Large or small, Barkman Patios can complement any space to create the ultimate entertaining area for family and friends. Our vast selection of pavers and slabs ensures timeless style paired with lasting durability.



Actual colours may vary per region and production facility.



Planning Tip: Phase it in

Consider planning your space in phases, scaling up as your budget and needs permit.

Talk to your Barkman contractor on custom kit builds like this.



◀ Broadway Planks 100mm Pavers (page 60)
Architextures Walls (page 74)
Architextures Fire Pit (page 100)

▲ Rosetta Dimensional Flagstone Slabs (page 70)
Rosetta Kodah Wall (page 85)
Rosetta Irregular Steps (page 93)
Rosetta Dimensional Fire Pit (page 101)
⚡ Broadway 65mm Pavers (page 52)
Architextures Wall Custom Fireplace (page 74)



- ◀ Roman Pavers (page 49)
- ▼ Lexington Slabs (page 69)
- Architextures Walls (page 74)
- Bridgewood Walls (page 76)
- Architextures Fire Pit (page 100)
- ▶ Fjord Pavers (page 53)
- Architextures Walls (page 74)
- Architextures Fire Pit (page 100)



Planning Tip: Calculate your next move
 Visit barkmanconcrete.com/calculator to help plan a materials list for your project.





Make a perfect match
When designing your outdoor living space, consider the architectural style of your home to help choose a complementary landscape style.

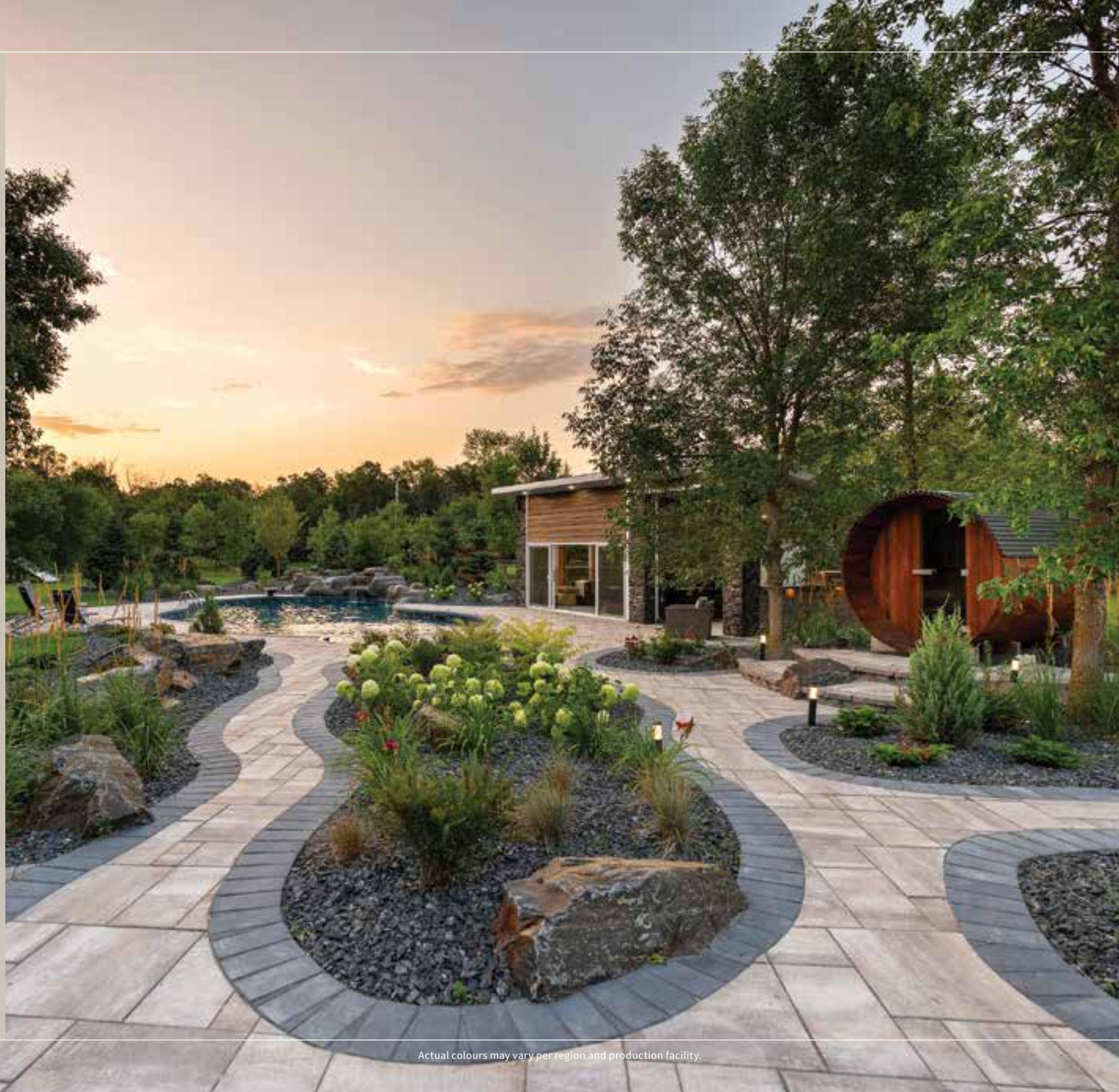
- ^ Broadway 65mm Pavers (page 52)
- ^ Broadway Planks 100mm Pavers (page 60)
- ^ Hexagon 65mm Pavers (page 54)



Paths

Start every journey on solid footing

A well-designed path can add comfort and charm to areas that would otherwise be considered utilitarian. Our array of pavers and slabs make for limitless possibilities that will transform how you move throughout your outdoor living space.



Actual colours may vary per region and production facility.



- ◀◀ Broadway 65mm Pavers (page 52)
- ◀ Flagstone Pavers (page 47)
- ◀ Keystone Compac Hewnstone Walls (page 79)
- ▼ Roman Pavers (page 49)
- ▼ Mesa Flagstone Pavers (page 57)
- ▼ Rosetta Belvedere Fire Pit (page 101)



Design Tip: Look in the right direction

Use your pathway as a way to direct sightlines to points of interest throughout your space.





A style to suit your tastes

From linear to organic, solid to divided, our pavers and slabs offer countless choices for creating the ideal path for your space.



- ▲ Rosetta Dimensional Flagstone Slabs (page 70)
- ▲ Bridgewood Walls (page 76)
- ▲ Architextures Walls (page 74)
- ▼ Verano Pavers (page 51)
- ▼ Rosetta Dimensional Steps (page 92)
- ▼ Rosetta Dimensional Flagstone Slabs (page 70)
- ▼ Navarro Pavers (page 58)
- ▼ Rosetta Dimensional Steps (page 92)



Pool Decks

Dive in, the options are breathtaking

Your investment deserves to look and perform its absolute best. Barkman products serve as the perfect complement to any style of pool with unmatched reliability to ensure you'll make years of lasting memories.



Actual colours may vary per region and production facility.



- ▲ Architextures Wall (page 74)
- ▲ Bridgewood Slabs (page 66)
- ▲ Bullnose Pavers (page 63)
- ◀ Lexington Slabs (page 69)
- ◀ Bullnose Pavers (page 63)
- ◀◀ Fjord Pavers (page 53)
- ◀ Bullnose Pavers (page 63)
- ◀ Quarry Stone Compact
- ◀ Fireplace with Wood Storage (page 99)



Design Tip: Keep the focus

Your pool is the focal point of your space. Be sure to plan your layout to accentuate it as the central element.



Live on the edge

Our Bullnose paver is the perfect complement to add functionality and style to your pool deck.

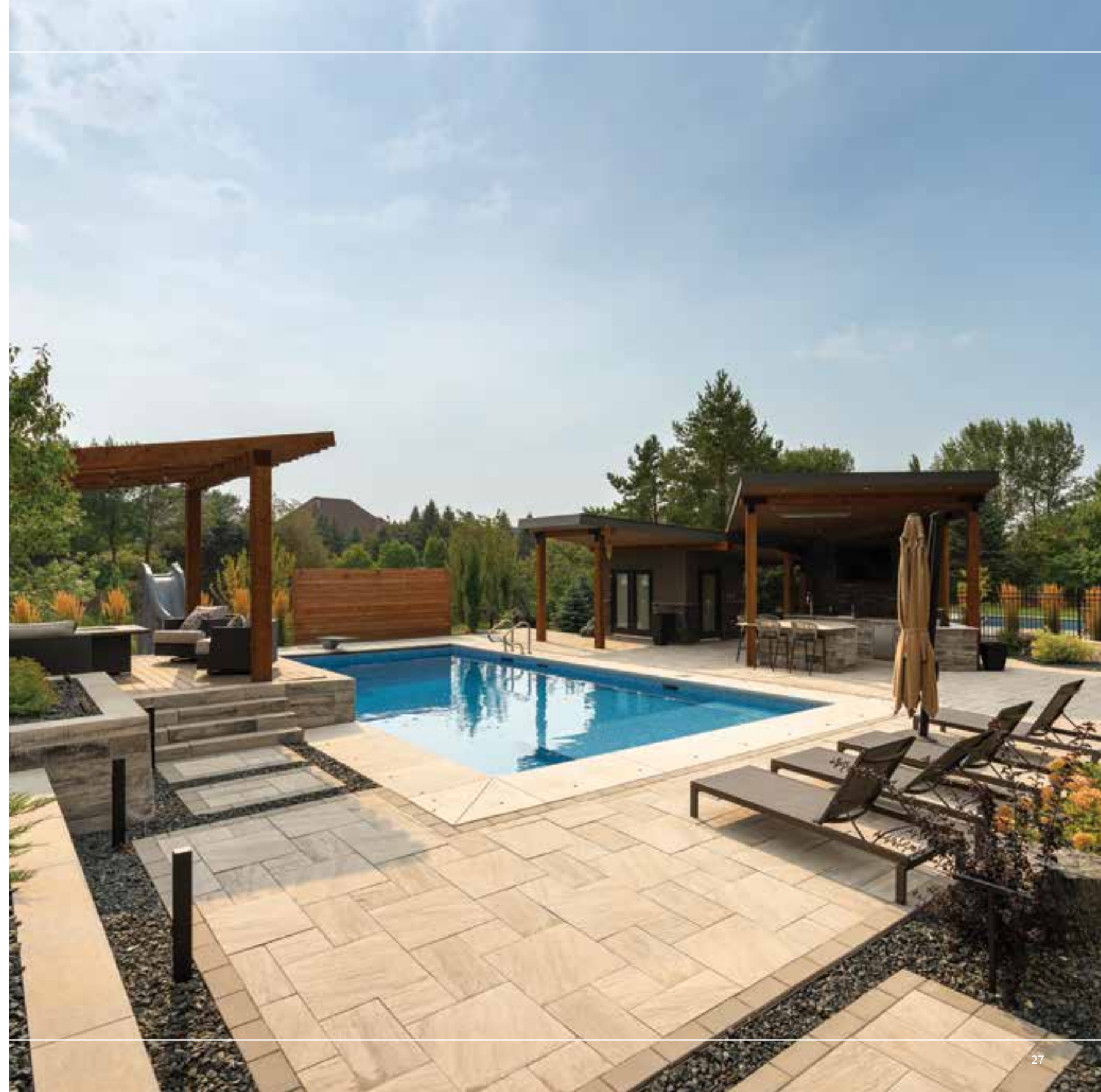


- ▲ Broadway 65mm Pavers (page 52)
Architextures Walls (page 74)
- Fjord Paver (page 53)
Broadway 65mm Pavers (page 52)
Architextures Walls (page 74)
- ▼ Broadway 65mm Pavers (page 52)
Bullnose Pavers (page 63)



Construction Tip: Know your limits

Pool decks are inherently complex in their construction. Be sure to consult an expert before starting your project.



Grand Walls & Steps

Make a grand statement, and set it in stone

We offer a wide variety of retaining wall options to suit any design idea for small and large scale projects. The quality and diversity of our wall products allow you to incorporate steps, tiers, and planting beds into your design.



Actual colours may vary per region and production facility.



◀ Broadway 65mm Pavers (page 52)
Architextures Walls (page 74)
Hexagon 65mm Pavers (page 54)

▲ Rosetta Outcropping Wall (page 87)
Rosetta Dimensional Steps (page 92)
Brookside Slabs (page 67)

▶ Fjord Pavers (page 53)
Rosetta Grand Ledge Wall (new) (page 86)
Rosetta Kodah Wall (page 85)
Rosetta Dimensional Steps (page 92)

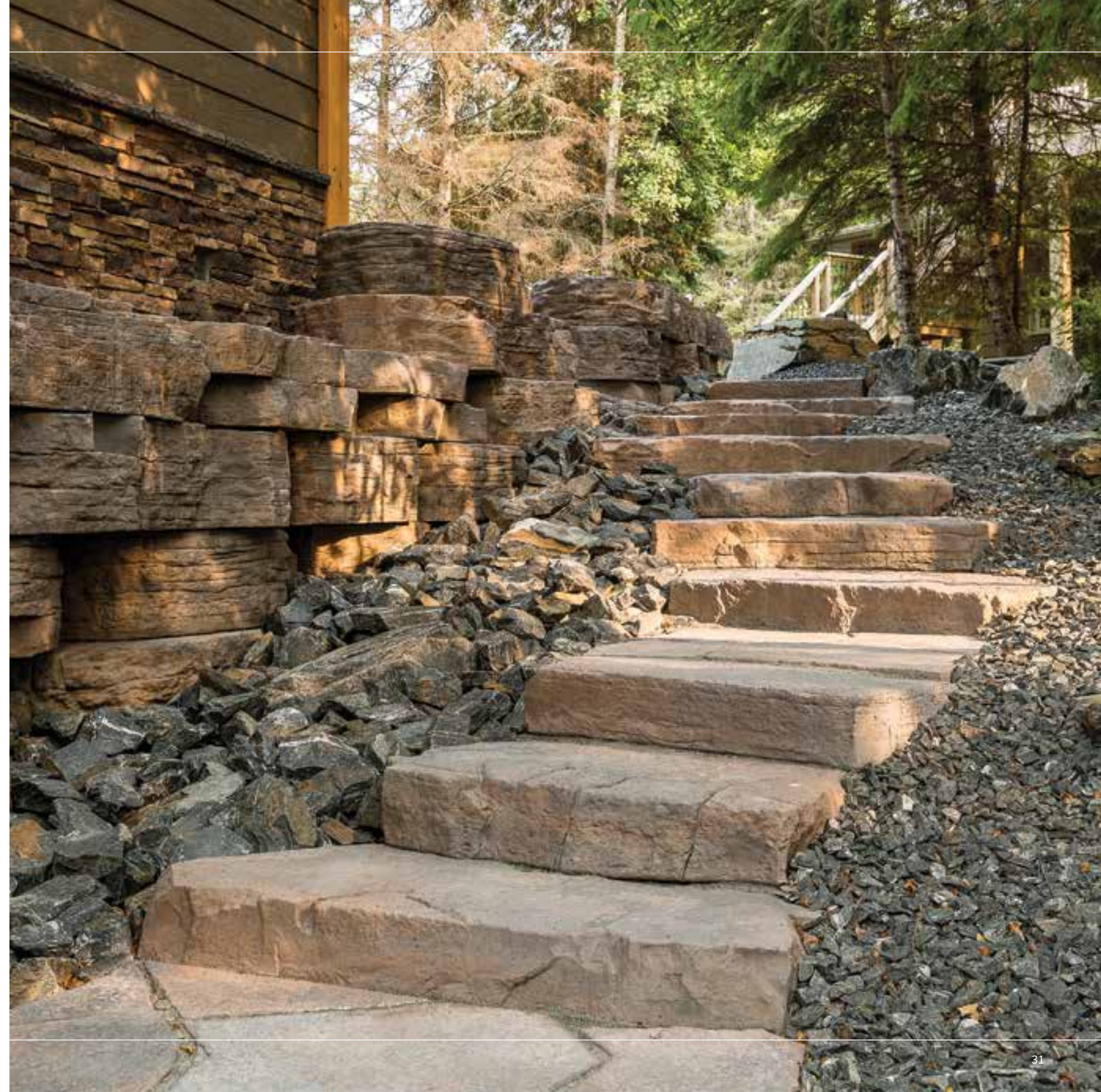


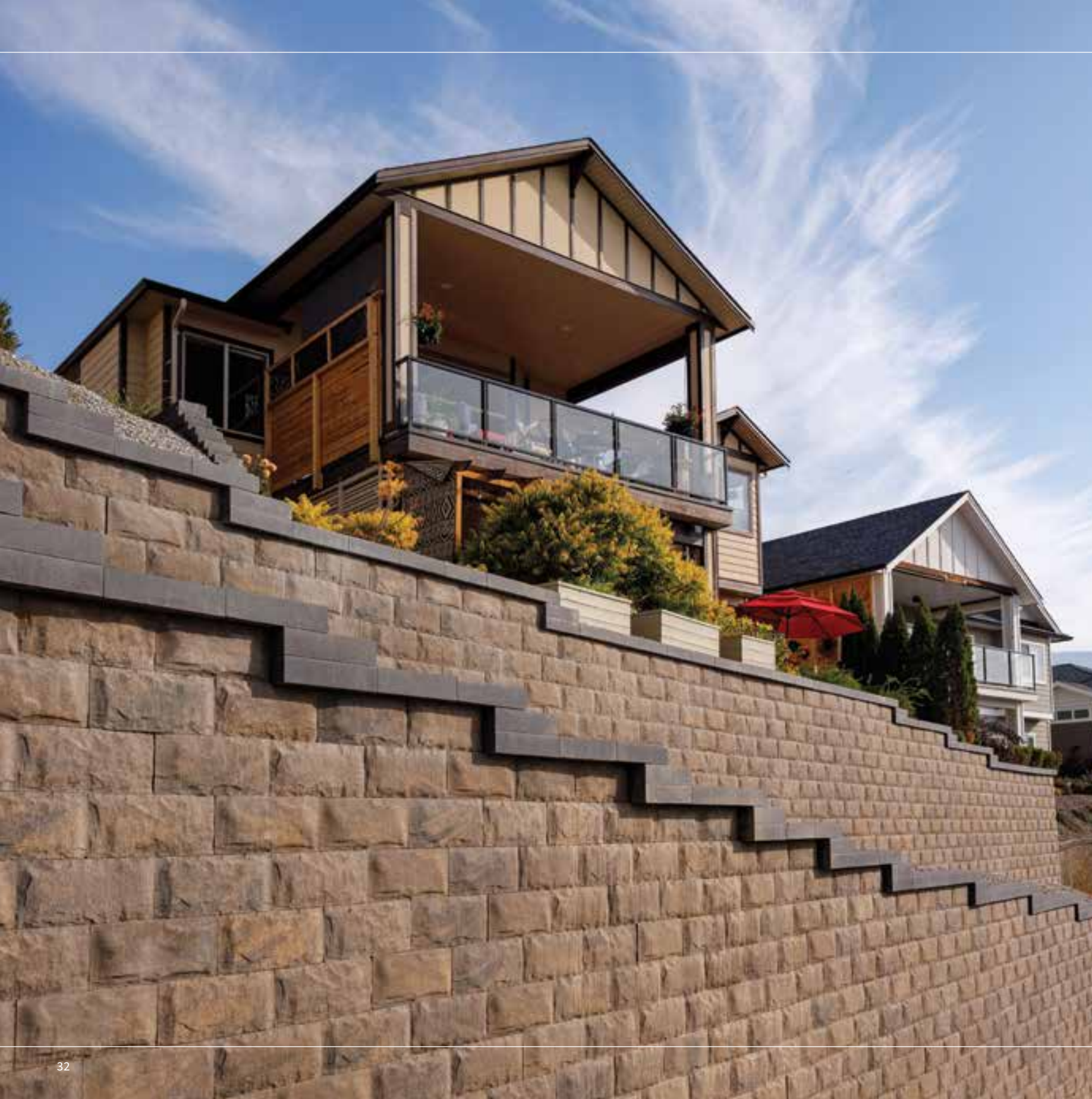
Planning Tip:
Scale it to suit

Scale of wall size should be in relation to the size of your property. It should be a noticeable feature, but not feel overbearing.



- ▲ Fjord Pavers (page 53)
- Keystone Compac Smooth Stone Walls (new) (page 78)
- Rosetta Outcropping Walls (page 87)
- Rosetta Irregular Steps (page 93)
- ◄ Rosetta Kodah Walls (page 85)





- ▲ Keystone Linear Walls (page 80)
- ◀ Rosetta Grand Ledge Walls (new) (page 86)
- ◀◀ Keystone Compac Hewnstone Walls (page 79)

Garden Walls

Fuse design and nature for a striking impression

Perfect for retaining flower beds or as freestanding accent dividers, these fully customizable garden walls are not only functional, but will also improve your home's curb appeal.



- ◀◀ Architextures Walls (page 74)
- ◀ Bridgewood Walls (page 76)
- ▼ Rosetta Dimensional Walls (page 84)



- ▶▶ Caliber Stone Walls (page 77)
- ▶ Keystone Compac Hewnstone Walls (page 79)
- ▼ Architextures Vertex Wall (page 75)
- Architextures Walls (page 74)



Options, options, options!
The styles, shapes and sizes afforded by our wall products are endless.



Landscape Kits

Designed to minimize complexity and maximize your enjoyment



Actual colours may vary per region and production facility.



Planning Tip: Say it with an accent

Install a fireplace or fire pit as an upgrade to accent an existing patio.



Fjord Pavers (page 53)
 Architectures Wall Custom Outdoor Kitchen (page 74)
 Ask your contractor for options in building your custom kits with our products.

Rosetta Belvedere Fire Pit (page 101)
 Bridgewood Slabs (page 66)
 Caliber Stone Fire Pit (page 100)
 Broadway 65mm Pavers (page 52)



Design Tip:
Big upgrades at a small cost

Fire pits provide a fantastic return on investment, truly transforming your entire space with minimal expense.



- ▲ Bridgewood Slabs (page 66)
- Rosetta Dimensional Fire Pit (page 101)
- ▶ Quarry Stone Compact Pizza Oven Kit (page 99)
- Cobble Pavers (page 56)
- ▶▶ Bridgewood Slabs (page 66)
- Quarry Stone Fireplace with Wood Storage (page 99)



There are two components that make up our Quarry Stone Compact Pizza Oven – the Quarry Stone Compact Pizza Oven Unit (Nonno Peppe) and the Quarry Stone Storage Unit. Each component is sold separately. Nonno Peppe pizza oven design may not be exactly as shown.





◀ Caliber Stone Fireplace (new) (page 99)
Broadway 65mm Pavers (page 52)
Quarry Stone Custom Bar (page 82)

NEW

Caliber Stone Fireplace System

We are excited to launch the new Caliber Stone Fireplace System. Embracing the inherent simplicity of building blocks, it is exceedingly versatile. Featuring 8 designs, each with a one- or two-sided fire chamber option, for a total of 16 different possible configurations.



Design 1A



Design 1B



Design 2A



Design 2B



Design 3A



Design 3B



Design 4A



Design 4B



Design 5A



Design 5B



Design 6A



Design 6B



Design 7A



Design 7B



Design 8A



Design 8B



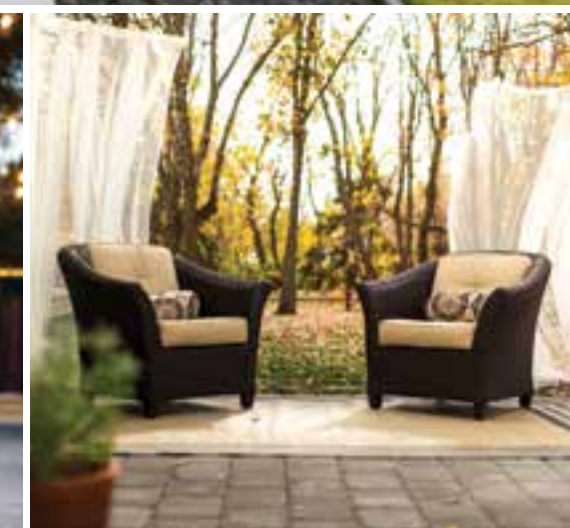
Scan here for detailed installation instructions.

Small Spaces



Start small, start something spectacular

We know that each space is as unique as the people who spend time in it. We created Small Spaces for first time homeowners, those on a limited project budget, or a small, urban backyard. Fashion a fantastic backyard that fits your life, exactly as you live it right now.



- ▲ Broadway 65mm Pavers (page 52)
- Quarry Stone Walls (page 82)
- Roman Pavers (page 49)
- ◄ Brookside Slabs (page 67)
- ◄◄ Navarro Pavers (page 58)
- Quarry Stone Walls (page 82)

Pavers

Barkman pavers offer a wide selection of options for your patio, walkway, driveway or parking space. Proven through testing and years of real world applications, we believe we have a paver for any aspiring design.

The Pavers section is organized by paver heights to make it easier for you to select the right pavers for your landscape project:

60 mm	Page 47
65 mm	Page 52
80 mm	Page 55
100 mm	Page 59
Coping	Page 63
Permeable	Page 64

Flagstone 60mm



COLOURS



Antique Brown



Sierra Grey

SIZES (LxWxH)



457.3 x 379.1/228 x 60 mm
18 x 14.92 /8.98 x 2.36 in

APPLICATIONS



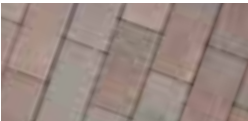
Pedestrian



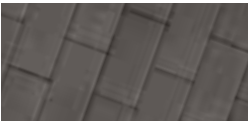
Holland 60mm



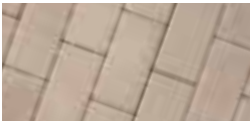
COLOURS



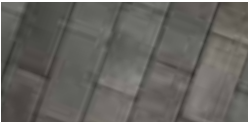
Antique Brown



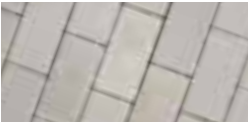
Charcoal



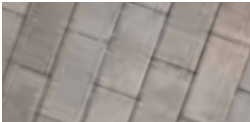
Desert Buff



Graphite



Natural



Sierra Grey

SIZES (LxWxH)



¹210 x 210 x 60 mm
8.27 x 8.27 x 2.36 in



¹210 x 105 x 60 mm
8.27 x 4.13 x 2.36 in



Holland 8 cm
210 x 105 x 80 mm
8.27 x 4.13 x 3.15 in

The small Holland Paver size exists in both 60mm and 80mm thicknesses.

APPLICATIONS



Pedestrian



Light Vehicular



Heavy Vehicular¹



¹Holland 8cm only. Holland 60mm Desert Buff is made in BC. Holland 210x210x60mm Charcoal is available in all regions, Sierra Grey is made in BC. Extra shipping applies to other provinces. Holland 80mm is also available in standard colours except Graphite.

Roman 60mm



COLOURS



Antique Brown



Charcoal



Desert Buff



Graphite



Natural



Sierra Grey

SIZES (LxWxH)



210 x 315 x 60 mm
8.27 x 12.40 x 2.36 in



210 x 262.5 x 60 mm
8.27 x 10.31 x 2.36 in



210 x 157.5 x 60 mm
8.27 x 6.18 x 2.36 in



210 x 105 x 60 mm
8.27 x 4.13 x 2.36 in

APPLICATIONS



Pedestrian



Light Vehicular



Natural and Graphite are made in BC. Extra shipping applies to other provinces.

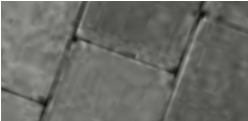
Roman Circle 60mm



COLOURS



Antique Brown



Charcoal



Desert Buff



Graphite



Natural



Sierra Grey

SIZES (LxWxH)

3148 x 60 mm
123.96 x 2.36 in

APPLICATIONS



Pedestrian



Light Vehicular



Verano 60mm



COLOURS



Charcoal



Sierra Grey



Sterling

SIZES (LxWxH)

292.1 x 292.1 x 60 mm
11.5 x 11.5 x 2.36 in

292.1 x 146.1 x 60 mm
11.5 x 5.75 x 2.36 in

146.1 x 146.1 x 60 mm
5.75 x 5.75 x 2.36 in

APPLICATIONS



Pedestrian



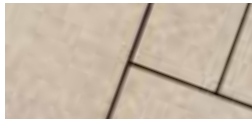
Light Vehicular



Broadway 65mm



COLOURS



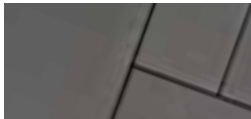
Amber



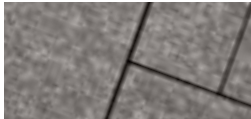
Natural



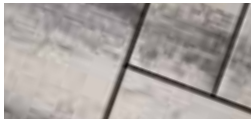
Sierra Grey



Ash



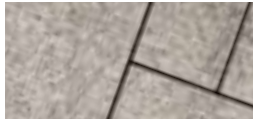
Obsidian



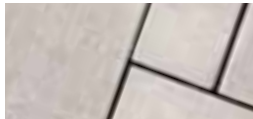
Sterling



Charcoal



Quartz



White (new—special order)



Graphite



Sandstone

SIZES (LxWxH)



300 x 150 x 65 mm
11.81 x 5.91 x 2.56 in



600 x 300 x 65 mm
23.62 x 11.81 x 2.56 in



300 x 300 x 65 mm
11.81 x 11.81 x 2.56 in



600 x 600 x 65 mm
23.62 x 23.62 x 2.56 in

APPLICATIONS



Pedestrian



Light Vehicular¹



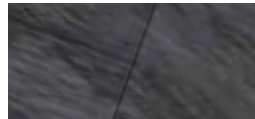
Permeable¹



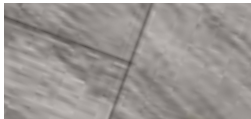
Fjord 65mm



COLOURS



Bedrock



Glacier

SIZES (LxWxH)



300 x 300 x 65 mm
11.81 x 11.81 x 2.56 in



600 x 300 x 65 mm
23.62 x 11.81 x 2.56 in



600 x 600 x 65 mm
23.62 x 23.62 x 2.56 in

APPLICATIONS



Pedestrian



¹ 300x150x65mm can be used for light vehicular applications such as residential driveways. This size also qualifies as a Permeable Paver
Broadway 300 x 300 x 65mm can be used as a Stepping Stone. Sierra Grey and Graphite are made in BC. Extra shipping applies to other provinces.

Hexagon 65mm



COLOURS



Ash



Charcoal



Natural

SIZES (LxWxH)



225 x 195 x 65
8.86 x 7.68 x 2.56

APPLICATIONS



Pedestrian



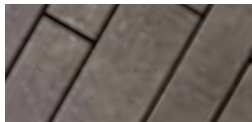
Light Vehicular



Boardwalk 80mm



COLOURS



Charcoal



Natural

SIZES (LxWxH)



362 x 119 x 80 mm
14.25 x 4.69 x 3.15 in



322 x 119 x 80 mm
12.68 x 4.69 x 3.15 in



282 x 119 x 80 mm
11.10 x 4.69 x 3.15 in



242 x 119 x 80 mm
9.53 x 4.69 x 3.15 in



362 x 89 x 80 mm
14.25 x 3.50 x 3.15 in



322 x 89 x 80 mm
12.68 x 3.50 x 3.15 in



282 x 89 x 80 mm
11.10 x 3.50 x 3.15 in



242 x 89 x 80 mm
9.53 x 3.50 x 3.15 in

APPLICATIONS



Pedestrian



Light Vehicular



Heavy Vehicular



Permeable



Cobble 80mm



COLOURS



Charcoal

SIZES (LxWxH)



300 x 150 x 80 mm
11.81 x 5.91 x 3.15 in



220 x 150 x 80 mm
8.66 x 5.91 x 3.15 in



260 x 150 x 80 mm
10.24 x 5.91 x 3.15 in



180 x 150 x 80 mm
7.09 x 5.91 x 3.15 in

APPLICATIONS



Pedestrian



Light Vehicular



Heavy Vehicular¹



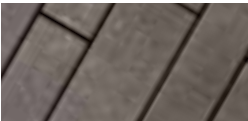
Permeable



Mesa Flagstone 80mm



COLOURS



Sierra Grey



Sterling

SIZES (LxWxH)



613.3 x 330.8 x 80 mm
24.14 x 13.02 x 3.15 in

APPLICATIONS



Pedestrian



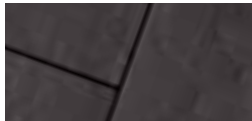
Light Vehicular



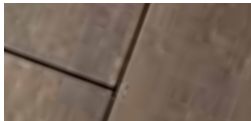
Navarro 80mm



COLOURS



Charcoal



Sierra Grey

SIZES (LxWxH)



306 x 459 x 80 mm
12.05 x 18.07 x 3.15 in



306 x 306 x 80 mm
12.05 x 12.05 x 3.15 in



306 x 153 x 80 mm
12.05 x 6.02 x 3.15 in

APPLICATIONS



Pedestrian



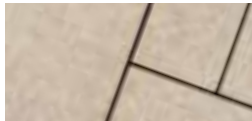
Light Vehicular



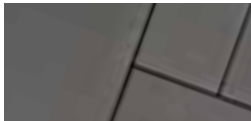
Broadway 100mm



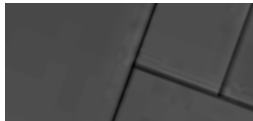
COLOURS



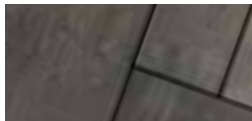
Amber



Ash



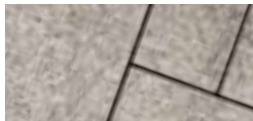
Charcoal



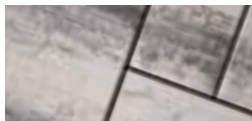
Natural



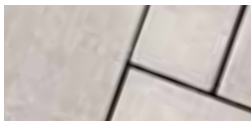
Obsidian



Quartz



Sterling



White (new-special order)

SIZES (LxWxH)



¹300 x 150 x 100 mm

11.81 x 5.91 x 3.94 in



²900 x 450 x 100 mm

35.43 x 17.72 x 3.94 in



300 x 300 x 100 mm

11.81 x 11.81 x 3.94 in



600 x 300 x 100 mm

23.62 x 11.81 x 3.94 in



²900 x 900 x 100 mm

35.43 x 35.43 x 3.94 in

APPLICATIONS



Pedestrian



Light Vehicular



Heavy Vehicular



Permeable¹



¹ This size qualifies as a Permeable Paver.

² These sizes can only be used for pedestrian applications.

Broadway Planks 100mm



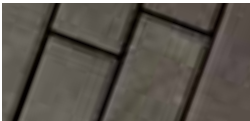
COLOURS



Amber



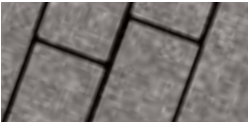
Ash



Charcoal



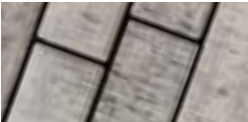
Natural



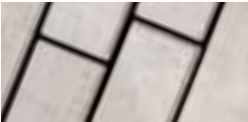
Obsidian



Quartz



Sterling



White (new-special order)

SIZES (LxWxH)

451 x 76 x 100 mm
17.76 x 2.99 x 3.94 in

400 x 100 x 100 mm
15.75 x 3.94 x 3.94 in

600 x 150 x 100 mm
23.62 x 5.91 x 3.94 in

APPLICATIONS



Broadway Contour 100mm



COLOURS



Ash



Charcoal



Natural



Sterling

SIZES (LxWxH)

451 x 76 x 100 mm
17.76 x 2.99 x 3.94 in

400 x 100 x 100 mm
15.75 x 3.94 x 3.94 in

600 x 150 x 100 mm
23.62 x 5.91 x 3.94 in

600 x 300 x 100 mm
23.62 x 11.81 x 3.94 in

APPLICATIONS



OVERVIEW

Broadway Contour 100mm features a striated texture that's slip-resistant and adds a striking accent to any given space. It blends well with the Broadway product line and allows for a versatile array of patterns for different applications.



¹600 x 300 x 100mm size does not qualify as a Permeable Paver

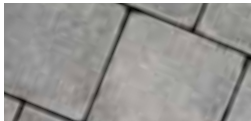
Broadway Weathered 100mm



COLOURS



Ash



Charcoal



Natural

SIZES (LxWxH)



¹300 x 150 x 100 mm
11.81 x 5.91 x 3.94 in



300 x 300 x 100 mm
11.81 x 11.81 x 3.94 in

APPLICATIONS



Pedestrian



Light Vehicular



Heavy Vehicular



Permeable



¹ This size qualifies as a Permeable Paver

Bullnose 60mm Coping Paver



COLOURS



Charcoal

SIZES (LxWxH)



305 x 152 x 60 mm
12.00 x 6.00 x 2.36 in

APPLICATIONS



Pedestrian



Bullnose Pavers are primarily used as a border paver around pool decks or as a step cap.

Permeable and Erosion Control Pavements

Colonial Eco Paver



COLOUR
Special Order. Talk to your rep for details.

SIZES (LxWxH)

157 x 157 x 80 mm
6.18 x 6.18 x 3.15 in



APPLICATIONS


Pedestrian


Light Vehicular


Heavy Vehicular


Permeable

Holland Eco Paver



COLOUR
Special Order. Talk to your rep for details.

SIZES (LxWxH)

210 x 105 x 80 mm
8.27 x 4.13 x 3.15 in



APPLICATIONS


Pedestrian


Light Vehicular



Heavy Vehicular



Permeable

Turfstone Eco Paver





COLOUR
Natural


SIZES (LxWxH)

599 x 399 x 80 mm
23.58 x 15.71 x 3.15 in




APPLICATIONS


Pedestrian


Light Vehicular


Heavy Vehicular


Permeable



Slabs

From the rustic wood grains of Bridgewood to the bold colours and textures of Lexington, Barkman offers a wide variety of slabs to suit any architectural style.

Bridgewood



COLOURS



Cedar Brown



Weathered Grey

SIZES (LxWxH)



890 x 250 x 51 mm
35.04 x 9.84 x 2 in



595 x 250 x 51 mm
23.43 x 9.84 x 2 in



440 x 250 x 51 mm
17.32 x 9.84 x 2 in

APPLICATIONS



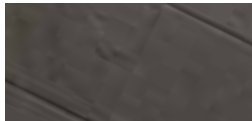
Pedestrian



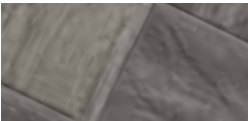
Brookside



COLOURS



Charcoal



Graphite



Hazel



Sierra Grey

SIZES (LxWxH)



400 x 400 x 50 mm
15.75 x 15.75 x 1.97 in



400 x 600 x 50 mm
15.75 x 23.62 x 1.97 in

APPLICATIONS



Pedestrian



Diamond Face



COLOURS



Natural

SIZES (LxWxH)



610 x 762 x 51 mm
24 x 30 x 2 in



610 x 610 x 51 mm
24 x 24 x 2 in



457 x 457 x 51 mm
18 x 18 x 2 in

APPLICATIONS



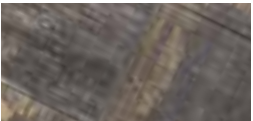
Pedestrian



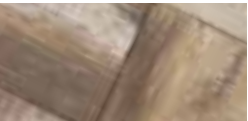
Lexington



COLOURS



Flint



Sandstone



Sterling

SIZES (LxWxH)



400 x 400 x 50 mm
15.75 x 15.75 x 1.97 in



400 x 600 x 50 mm
15.75 x 23.62 x 1.97 in

APPLICATIONS



Pedestrian



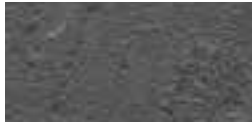
Rosetta® Dimensional Flagstone



COLOURS



Copper Canyon



Northern Charcoal



Fond du Lac



Pacific Grey

SIZES (LxWxH)



610 x 610 x 51 mm
24 x 24 x 2 in



457 x 610 x 51 mm
18 x 24 x 2 in



457 x 457 x 51 mm
18 x 18 x 2 in



305 x 457 x 51 mm
12 x 18 x 2 in



305 x 305 x 51 mm
12 x 12 x 2 in



305 x 152 x 51 mm
12 x 6 x 2 in

APPLICATIONS



Pedestrian



Rosetta® Grand Flagstone



COLOURS



Copper Canyon



Northern Charcoal



Fond du Lac



Pacific Grey

SIZES (LxWxH)



1067 x 965 x 51 mm
42 x 38 x 2 in

APPLICATIONS



Pedestrian



• Terrace



COLOURS



Charcoal



Graphite



Natural



Sterling (new)

SIZES (LxWxH)



610 x 610 x 51 mm
24 x 24 x 2 in

APPLICATIONS



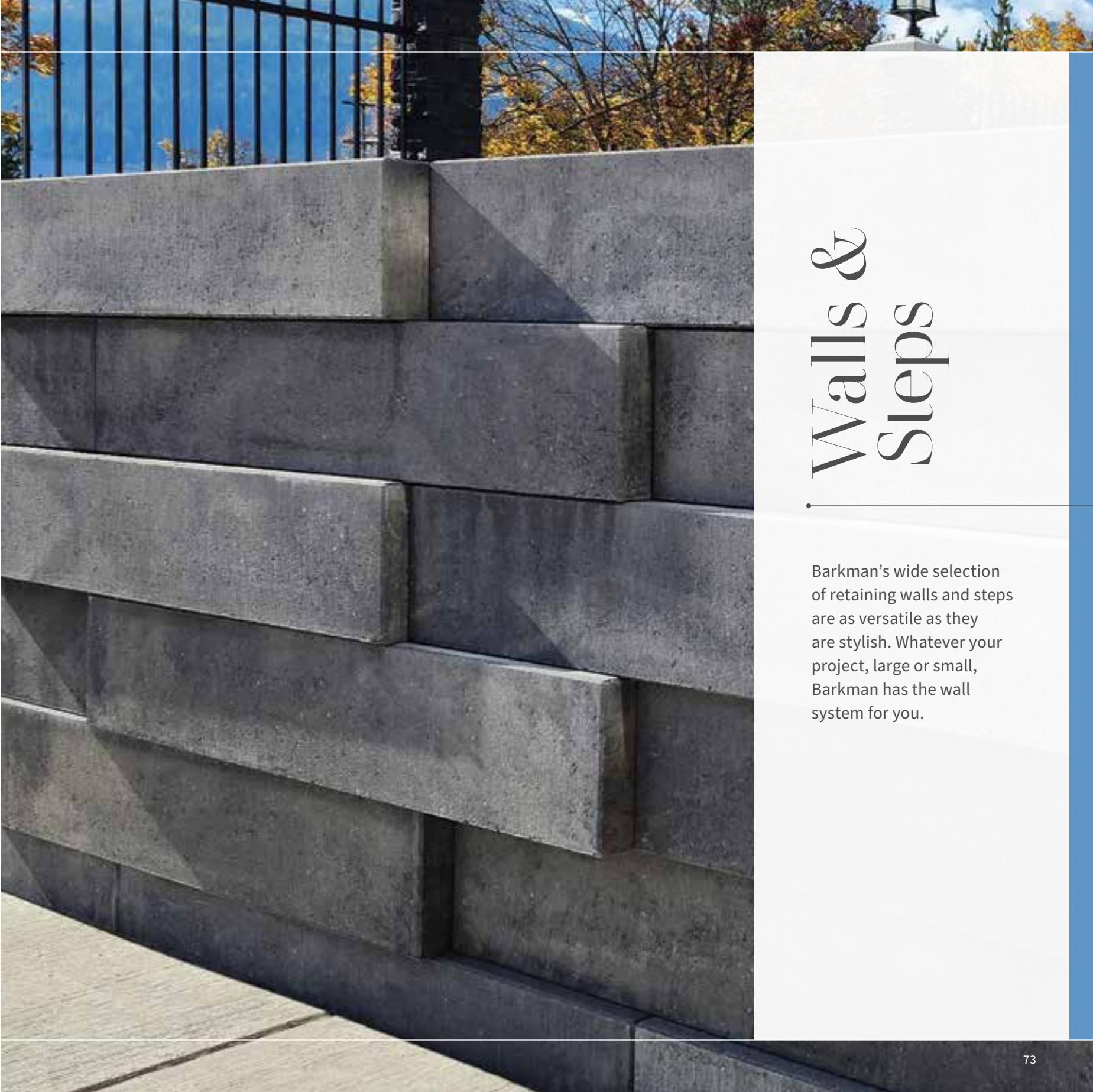
Pedestrian



Rooftop



Terrace Slab uses pedestals for rooftop applications.



Walls & Steps

Barkman’s wide selection of retaining walls and steps are as versatile as they are stylish. Whatever your project, large or small, Barkman has the wall system for you.



COLOURS



Ash



Sterling



Flint

SIZES (HxWxD)



Standard
150 x 900 x 285 mm
5.9 x 35.43 x 11.22 in



Coping
150 x 900 x 285 mm
5.9 x 35.43 x 11.22 in



Corner
150 x 900 x 285 mm
5.9 x 35.43 x 11.22 in

APPLICATIONS



Garden Walls



Retaining Walls



COLOURS



Ash



Charcoal

SIZES (HxWxD)



Standard
150 x 900 x 285 mm
5.9 x 35.43 x 11.22 in



Coping
150 x 900 x 285 mm
5.9 x 35.43 x 11.22 in



Corner
150 x 900 x 285 mm
5.9 x 35.43 x 11.22 in

APPLICATIONS



Garden Walls



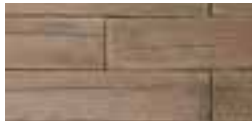
Retaining Walls



Bridgewood Wall



COLOURS



Cedar Brown



Weathered Grey

SIZES (HxWxD)

152 x 1067 x 203 mm
6 x 42 x 8 in

APPLICATIONS



Garden Walls



Retaining Walls



Caliber Stone



COLOURS



Charcoal



Sterling



Sierra Grey

SIZES (HxWxD)

Standard
102 x 305 x 203 mm
4 x 12 x 8 in

APPLICATIONS



Garden Walls



Retaining Walls



Keystone Compac® Smooth Stone

NEW



COLOURS



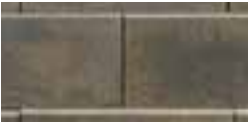
Charcoal



Graphite



Natural



Sierra Grey

SIZES (HxWxD)

Standard
203 x 457 x 305 mm
8 x 18 x 12 in

Coping
101.6 x 457.2 x 355.5 mm
4 x 18 x 14 in

Small Coping
100 x 450 x 300 mm
3.94 x 17.72 x 11.81 in

Corner
203 x 457.2 x 228.6 mm
8 x 18 x 9 in

Fiberglass Alignment Pins
13 x 133 mm
0.5 x 5.25 in

APPLICATIONS



Garden Walls



Retaining Walls



Keystone Compac® Hewnstone



COLOURS



Charcoal



Graphite



Natural



Sierra Grey

SIZES (HxWxD)

Standard
203 x 457 x 305 mm
8 x 18 x 12 in

Coping
101.6 x 457.2 x 355.5 mm
4 x 18 x 14 in

Small Coping
100 x 450 x 300 mm
3.94 x 17.72 x 11.81 in

Corner
203 x 457.2 x 228.6 mm
8 x 18 x 9 in

Fiberglass Alignment Pins
13 x 133 mm
0.5 x 5.25 in

APPLICATIONS



Garden Walls



Retaining Walls



Keystone Linear[®]



COLOURS



Charcoal



Graphite



Natural

SIZES (H x W x D)



Standard
178 x 1000 x 350 mm
7 x 39.37 x 13.78 in



Copping
178 x 1000 x 350 mm
7 x 39.37 x 13.78 in

Fiberglass Alignment Pins
13 x 51 mm
2 x 0.5 in

APPLICATIONS



Garden Walls



Retaining Walls



Note: Fiberglass alignment pins required for installation are sold separately.
Pins used are shorter compared to the Keystone Compac Hewnstone pins. Graphite is made in BC. Extra shipping applies to other provinces.

MagnumStone[™]



COLOURS



Natural

MagnumStone[™] can be left as natural grey or custom colour stained after installation.

FACE OPTIONS



Boulder Face¹



LedgeStone Face



Stratum²

SIZES (H x W x D)

Face Size
610 x 1219 x 610 mm
24 x 48 x 24 in

APPLICATIONS



Garden Walls



Retaining Walls



¹ Boulder Face is for Alberta only
² Stratum Face is for Vancouver Island only
For more detailed information, refer to the MagnumStone product brochure.

Quarry Stone



COLOURS



Charcoal



Sierra Grey

SIZES (HxWxD)



Standard
102 x 305 x 203 mm
4 x 12 x 8 in

APPLICATIONS



Garden Walls



RomanStack®



COLOURS



Charcoal



Sierra Grey

SIZES (HxWxD)



Standard
102 x 203 [152] x 203 mm
4 x 8 [6] x 8 in



Coping
102 x 203 [152] x 203 mm
4 x 8 [6] x 8 in



Advanced Corner
102 x 280 [203] x 203 mm
4 x 11 [8] x 8 in

APPLICATIONS



Garden Walls



Rosetta[®] Dimensional Wall



COLOURS



Copper Canyon



Northern Charcoal



Fond du Lac



Pacific Grey

SIZES (H x W x D)

Straight
102 x 305 x 203 mm
4 x 12 x 8 in

Wedge
102 x 305 [229] x 203 mm
4 x 12 [9] x 8 in

Coping
64 x 610 x 318 mm
2.50 x 24 x 12.50 in
64 x 457 x 318 mm
2.50 x 18 x 12.50 in
64 x 483 x 318 mm
2.50 x 19 x 12.50 in

APPLICATIONS



Garden Walls



Rosetta Belvedere Coping and Rosetta Dimensional Coping can be used on the Rosetta Dimensional Wall System. Coping is optional, depending on the desired look.

Rosetta[®] Kodah



COLOURS



Copper Canyon



Northern Charcoal



Fond du Lac



Pacific Grey

SIZES (H x W x D)

Wall Pallet
152 x 305 x 267 mm
6 x 12 x 10.5 in

152 x 533 x 267 mm
6 x 21 x 10.5 in

152 x 762 x 267 mm
6 x 30 x 10.5 in

152 x 1067 x 267 mm
6 x 42 x 10.5 in

Corner Pallet
152 x 533 x 267 mm
6 x 21 x 10.5 in

APPLICATIONS



Garden Walls



Retaining Walls



Note: All sizes come in one pallet and are not sold individually. Rosetta Dimensional Coping (optional) can be used to provide a unique finished look to the Rosetta Kodah Wall system.

Rosetta® Grand Ledge

NEW



COLOURS



Copper Canyon



Northern Charcoal



Fond du Lac



Pacific Grey

SIZES (HxWxD)



Standard
305 x 914 x 508 mm
12 X 36 X 20 in



Standard
305 x 1138 x 508 mm
12 x 48 x 20 in



Standard
305 x 1443 x 508 mm
12 x 60 x 20 in



Standard
305 x 1748 x 508 mm
12 x 72 x 20 in



Free Standing
305 x 914 x 508 mm
E: 12 x 36 x 20 in



Free Standing
305 x 1088 x 502 mm
B: 12 x 42.75 x 19.75 in



Free Standing
305 x 1168 x 533 mm
C: 12 x 46 x 21 in



Free Standing
305 x 1372 x 508 mm
F: 12 x 54 x 20 in

APPLICATIONS



Garden Walls



Retaining Walls



Rosetta® Outcropping



COLOURS



Copper Canyon



Northern Charcoal



Fond du Lac



Pacific Grey

SIZES (HxWxD)

Pallet A

305 x 1067 x 610 [508] mm
12 x 42 x 24 [20] in

305 x 1219 x 610 [508] mm
12 x 48 x 24 [20] in

305 x 1524 x 610 [508] mm
12 x 60 x 24 [20] in

305 x 1676 x 610 [508] mm
12 x 66 x 24 [20] in

Pallet B

152 x 610 x 610 [508] mm
6 x 24 x 24 [20] in

152 x 914 x 610 [508] mm
6 x 36 x 24 [20] in

152 x 1219 x 610 [508] mm
6 x 48 x 24 [20] in

305 x 914 x 610 [508] mm
12 x 36 x 24 [20] in

305 x 1372 x 610 [508] mm
12 x 54 x 24 [20] in

305 x 1829 x 610 [508] mm
12 x 72 x 24 [20] in

Pallet C

152 x 610 x 610 [508] mm
6 x 24 x 24 [20] in

152 x 914 x 610 [508] mm
6 x 36 x 24 [20] in

610 x 1219 x 610 [508] mm
24 x 48 x 24 [20] in

457 x 1524 x 610 [508] mm
18 x 60 x 24 [20] in

Pallet D (Freestanding)

305 x 1524 x 762 mm
12 x 60 x 30 in

305 x 1219 x 762 mm
12 x 48 x 30 in

152 x 1219 x 762 mm
6 x 48 x 30 in

Pallet E (Freestanding)

305 x 1829 x 762 mm
12 x 72 x 30 in

305 x 914 x 762 mm
12 x 36 x 30 in

152 x 914 x 762 mm
6 x 36 x 30 in

Corner

305 x 1219 x 737 mm
12 x 48 x 30 in

APPLICATIONS



Garden Walls



Retaining Walls





COLOURS



Charcoal



Sierra Grey



Desert Buff

SIZES (HxWxD)



Standard
102 x 203 [152] x 203 mm
4 x 8 [6] x 8 in



Coping
102 x 203 [152] x 203 mm
4 x 8 [6] x 8 in



Advanced Corner
102 x 280 [203] x 203 mm
4 x 11 [8] x 8 in

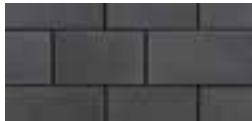
APPLICATIONS



Garden Walls



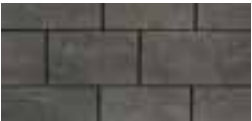
COLOURS



Charcoal



Sierra Grey



Graphite

SIZES (HxWxD)



Standard
100 x 211 x 190 mm
3.93 x 8.31 x 7.48 in



Coping
100 x 211 x 190 mm
3.93 x 8.31 x 7.48 in



Advanced Corner
100 x 283 x 190 mm
3.93 x 11.54 x 7.48 in

APPLICATIONS



Garden Walls



Bridgewood Steps



COLOURS



Cedar Brown



Weathered Grey

SIZES (H x W x D)



1200 x 451 x 140 mm
47.24 x 17.75 x 5.51 in



Keystone Linear Steps



COLOURS



Charcoal



Graphite



Natural

SIZES (H x W x D)



Coping
178 x 1000 x 350 mm
7 x 39.37 x 13.78 in



Rosetta® Dimensional Steps



COLOURS



Copper Canyon



Fond du Lac



Northern Charcoal



Pacific Grey

SIZES (H x W x D)



3' length
914 x 457 x 178 mm
36 x 18 x 7 in



4' length
1219 x 457 x 178 mm
48 x 18 x 7 in



6' length
1829 x 762 x 178 mm
72 x 30 x 7 in



Rosetta® Irregular Steps



COLOURS



Copper Canyon



Fond du Lac



Northern Charcoal



Pacific Grey

SIZES (H x W x D)



1372 x 559 x 178 mm
54 x 22 x 7 in

1524 x 610 x 178 mm
60 x 24 x 7 in

1067 x 432 x 178 mm
42 x 17 x 7 in

1219 x 711 x 178 mm
48 x 28 x 7 in

1067 x 660 x 178 mm
42 x 26 x 7 in

1219 x 610 x 178 mm
48 x 24 x 7 in



All 6 sizes come in one pallet and are not sold individually.

Finishing Touches

With all that goes into a landscape project, you want to know that the job was finished properly. Our finishing products will make sure your project stays vibrant today, and for years to follow.



Edgers

Granite Edger



COLOUR



Charcoal



Graphite*

SIZES (LxWxH)



311 x 102 x 102 mm
12.25 x 4 x 4 in



I-Con Edger



COLOUR



Charcoal



Desert Buff



Natural*



Sierra Grey

SIZES (LxWxH)



314 x 92 x 102 mm
12.375 x 3.625 x 4 in



Quarry Stone Edger



COLOUR



Charcoal



Sierra Grey

SIZES (LxWxH)



102 x 102 x 203 mm
4 x 4 x 8 in



Base & Adhesive

Gator Base



Building a patio is hard work and one often overlooked piece is preparing the base.

For a light pedestrian patio, we recommend using 4–6 inches for your gravel base and one inch of sand. That’s a total excavation depth of 5–7 inches just for your base, never mind the paver height on top of that. However with using Gator base, you can place one inch of sand on your leveled native soil and place your Gator base on top, removing so much extra work. Gator Edge and Gator Screws are required for installation.



Footing Pads



COLOUR



Charcoal

SIZES (L x W x H)



305 x 305 x 102 mm
12 x 12 x 4 in



457 x 457 x 152 mm
18 x 18 x 6 in



457 x 457 x 102 mm
18 x 18 x 4 in



610 x 610 x 152 mm
24 x 24 x 6 in

Adhesive



Alliance’s Gator Block Bond XP Low VOC is one of the strongest polyurethane adhesives on the market. It is specially formulated for overlays, pool copings, steps and wall caps, concrete pavers, wet cast, natural stones, retaining walls, masonry units and bricks. Gator Block Bond XP Low VOC Polyurethane Adhesive is formulated to provide a permanent bond in 24 hours to the above materials if properly installed.

Finishing

Edging Options



Snap Edge’s unique “Snip & Flex” feature allows total freedom when designing your driveway or sidewalk. You can create unlimited curves and angles in minutes, ensuring an aesthetically pleasing and structurally superior project. This flexibility and strength has made Snap Edge® the premier edging choice of professionals.

The New Gator Edge X4 is made with 100% Polypropylene. This will give it great strength as well as provide great flexibility. Gator Edge X4 can be used for all linear or curved by removing the bridge support for applications such as walkways, paths, entrances etc. Gator Edge X4 can be locked together with the “SNAP & LOCK” system.

Polymeric Sand



Polybind Complete G2 is made with a state-of-the-art manufacturing process. Specifically, calibrated sand is mixed with sophisticated intelligent polymers. This new generation of Intelligent Polymers neutralizes haze and dust. The polymeric sand application is now dust free and haze free. No blower is needed and the intelligent polymeric sand requires only one watering. Polybind Complete G2 is recommended for a variety of uses including pool decks, patios, footpaths, driveways, parking spaces, pavements, etc. Available in Nevada Tan, Oxford Grey, Ivory White and Jet Black.

Cleaners NEW



A common problem that often arises with newly installed pavers is the appearance of a white haze that won’t seem to come off. The most likely cause of this is a naturally occurring phenomenon called efflorescence. Efflorescence occurs when water-soluble salts within concrete migrate to the surface and react with carbon dioxide to form calcium carbonate. This substance remains visible on the surface of the hardscape products like pavers, slabs and walls in the form of a white haze.

Barkman Concrete now supplies two EaCo Chem cleaning products to combat efflorescence — EF-Fortless and NMD 80. Check our website for more details.

Landscape Kits

Landscape kits offer a cost-effective way to turn an outdoor space into something special without costly concrete work. Modular in design and timeless in appeal, Barkman Landscape Kits are an efficient way to enhance any space.



Fireplaces & Fire Pits

Caliber Stone Fireplace System NEW



COLOUR



Sterling



Charcoal Accent



SIZES (H x W x D)

2134 x 1829 x 1067 mm
84 x 72 x 42 in

The specs on the left and image above shows design 6. Scan the QR code for more design options.

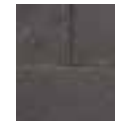
Quarry Stone Fireplace



COLOUR



Sierra Grey



Charcoal Accent



SIZES (H x W x D)

2699 x 1397 x 1156 mm
106.25 x 55 x 45.5 in

**Quarry Stone Fireplace
Wood Storage**
889 x 1061 x 914 mm
35 x 40 x 36 in

Quarry Stone Compact Fireplace



COLOUR



Sierra Grey



Charcoal Accent



SIZES (H x W x D)

1981 x 1118 x 1016 mm
78 x 44 x 40 in

**Quarry Stone Compact
Wood Storage**
965.2 x 813 x 711 mm
38 x 32 x 28 in

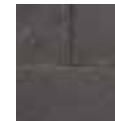
Quarry Stone Compact Pizza Oven



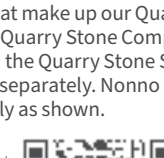
COLOUR



Sierra Grey



Charcoal
Accent



SIZES (H x W x D)

Quarry Stone Storage Unit
953 x 813 x 749 mm
37.5 x 32 x 29.5 in

There are two components that make up our Quarry Stone Compact Pizza Oven Kit – the Quarry Stone Compact Pizza Oven Unit (Nonno Peppe) and the Quarry Stone Storage Unit. Each component is sold separately. Nonno Peppe pizza oven design may not be exactly as shown.


Compact Pizza Oven Unit
1016 x 762 x 749 mm
40 x 30 x 29.5 in

Fire Pits


Architextures Fire Pit




COLOUR




Ash



Flint



Sterling



SIZES (H x W x D)

400 x 614 x 614 (inside) mm
15.75 x 24 x 24 (inside) in

400 x 1184 x 1184 (outside) mm
15.75 x 47 x 47 (outside) in

Quarry Stone Fire Pit



COLOUR



Charcoal



Sierra Grey



SIZES (H x W x D)

305 x 711 x 711 (inside) mm
12 x 28 x 28 (inside) in

305 x 1118 x 1118 (outside) mm
12 x 44 x 44 (outside) in

Bridgewood Fire Pit




COLOUR



Cedar Brown



Weathered Grey



SIZES (H x W x D)

305 x 864 x 864 (inside) mm
12 x 34 x 34 (inside) in

305 x 1270 x 1270 (outside) mm
12 x 50 x 50 (outside) in

Caliber Stone Fire Pit



COLOUR



Charcoal



Sierra Grey



SIZES (H x W x D)

305 x 711 x 711 (inside) mm
12 x 28 x 28 (inside) in


305 x 1118 x 1118 (outside) mm
12 x 44 x 44 (outside) in

Fire Pits


Rosetta® Belvedere Fire Pit




COLOUR




Copper Canyon




Fond du Lac



Northern Charcoal



Pacific Grey



SIZES (H x W x D)

381 x 940 (inside) mm
15 x 37 (inside) in

368.3 x (+/-) 73.2 (outside) mm
14.5 x (+/-) 58 (outside) in

StackStone Fire Pit



COLOUR



Charcoal



Sierra Grey



SIZES (H x W x D)


305 x 635 (inside) mm
12 x 25 (inside) in

305 x 1067 (outside) mm
12 x 42 (outside) in


Rosetta® Dimensional Fire Pit




COLOUR




Copper Canyon




Fond du Lac



Northern Charcoal



Pacific Grey



SIZES (H x W x D)


305 x 711 x 711 mm
12 x 28 x 28 in

305 x 1118 x 1118 (outside) mm
12 x 44 x 44 (outside) in


StackStone Fire Pit Coping and Liner



COLOUR



Charcoal



Natural

StackStone Fire Pit is sold separately. The Coping for the fire pit is sold separately and can be purchased as a set of 6 pieces. The liner is sold separately.

Coping (H x D)

51 x 1118 (outside) mm
2 x 44 (outside) in

51 x 635 (inside) mm
2 x 25 (inside) in

Liner (H x D)

356 x 762 mm
14 x 30 in

Barkman Certified Accessories

A great hardscape begins with proper installation. That's why we recommend and supply Barkman certified accessories like Alliance polymeric sand, Snap Edge and Gator XTreme Edge products to protect your Barkman investment. Use our edging options to create unlimited curves and angles in minutes, ensuring an aesthetically pleasing and structurally superior landscape project. For more details, download the Barkman 2025 Specifications Guide at [BarkmanConcrete.com](https://www.barkmanconcrete.com)

The Environment

At Barkman Concrete, we prioritize responsible material stewardship, creating precast concrete products that balance user benefits with environmental preservation. Our meticulous material selection, including recycled materials, enhances product performance while minimizing ecological impact.

This commitment to longevity and durability reduces the need for replacements, making Barkman's precast concrete a sustainable choice for generations to come.

Quality and Support Pledge

We use high-quality materials and implement rigorous quality control measures throughout our manufacturing process, aiming to consistently deliver a product of superior quality. We also support our products with a large network of dealers and contractors. When you need us, we'll be there to help. For any questions, please contact us at quality@barkmanconcrete.com

Transferable Lifetime Warranty for Homeowners

Barkman Concrete warrants the structural integrity of our paving stone, slabs and retaining wall units. For homeowners, we offer a transferable lifetime warranty, where we will replace or repair at our option, without charge, any defective product installed and maintained to our guidelines under normal use. Commercial uses have specific warranties as well. For more information, please go to our website at [BarkmanConcrete.com/about/warranty](https://www.barkmanconcrete.com/about/warranty).

Actual Colours May Vary

Important: Actual colours may vary per region and production facility. Every effort has been made to ensure accuracy in the colour representations found in this product catalogue. However, due to the natural characteristics of concrete, the manufacturing process and print reproduction, actual colours in the final product may vary from that shown.

For the final color selection, it is advisable to visit your local dealer and choose from the available stocked products. Barkman strongly recommends inspecting the product and verifying its color upon receipt. If you notice any discrepancies, please reach out to your local dealer before proceeding with your project. Installing the product implies your acceptance of it as it is.

Efflorescence

Our warranty excludes efflorescence. Efflorescence is a natural phenomenon that affects all concrete products and sometimes manifests as a white dusty layer on the surface of the pavement.

Efflorescence does not affect the performance or the strength of the product in any way. Efflorescence will disappear over time or can be removed with efflorescence cleaner. For more information on this, you can read our blog at www.barkmanconcrete.com/blog/what-to-do-with-white-residue-on-pavers.

Installation and Project Estimation Support

Barkman provides easy-to-read installation guides that contain simple step-by-step instructions to help make installation a snap. Visit [BarkmanConcrete.com/resources](https://www.barkmanconcrete.com/resources) to download a copy. Our website and Barkman App also feature a project calculator that allows you to easily estimate the quantity of Barkman material and accessories you will need for your project.

Barkman does its best to ensure accuracy for all measurements of our paving stone, slabs, and walls. Measurements provided may vary slightly depending on laying application. Best practice is to always have physical product on site before pouring preset structures.

Compacting

To avoid damaging the surface of pavers, it is recommended to use a Paver Saver mat on a plate or a roller compactor during installation. This is a common practice for most concrete paver projects. Ask your equipment supplier for more details on how to get this accessory. Barkman is not liable for any damage resulting from improper use of compaction tools. Base compaction is critical to the longevity of the pavers. Ensure the base is prepared according to CMHA specifications.

Job Site Residue

When you use a saw to cut the pavers, you will produce water or dust that contains residue. This residue can stick to the pavers and make them look dirty if it dries up. You should rinse and remove the water or dust from the pavers as soon as possible. Sometimes, other sources of dirt, such as soil movement or weather conditions, can also cause residue on the pavers. You should clean these off right away, but they will not damage the product or your installation. This occurrence is not covered by our warranty.

Polymeric Haze

If you did not clean the polymeric joint sand off the top of the paver correctly, you might see some polymeric haze on your concrete products. This is not a problem for the quality of the product or your installation. The haze will go away naturally over time with rain and weather. You can also use a special cleaner or a pressure washer to remove it; you should ask your contractor or the polymeric sand company you used for further recommendations. This occurrence is not covered by our warranty.

Maintenance

Concrete products are exposed to the elements all year round, so they need some regular upkeep to keep them looking good and functioning well. You can use mild cleaners, water and chemicals that are suitable for concrete to remove dirt and stains from your products. You can also apply different kinds of protectant to shield your products from mother nature. By taking good care of your concrete products, you can enjoy their benefits for many years.

If you need more information on what cleaners and protectant to use, you can ask your local hardscape dealer/distributor, your contractor, contact us or search online.

Snow Removal

It is essential that snow removal equipment is equipped with adequate spacing, bumpers, and rubber blade guards to safeguard the paver's surface. Barkman is not liable for any damage resulting from the improper use snow removal equipment, which could lead to potential scuff marks on pavers and slabs. If salt is to be used, only salts using NaCl should be used and never salts with magnesium.

How to Order

Ordering Barkman products is as simple as calling or visiting one of our many dealers or contractors. Go to [BarkmanConcrete.com/find-a-dealer](https://www.barkmanconcrete.com/find-a-dealer) for a full list of dealers and to find one in your area. Please be ready to specify product style and colour choice if required. If working directly with a contractor, please be sure to specify Barkman products to ensure Barkman quality. For commercial or municipal projects, go to [BarkmanConcrete.com/commercial-solutions](https://www.barkmanconcrete.com/commercial-solutions) and contact our commercial product consultants. Additional shipping fees may apply to BC-made products for customers in other provinces. Note that all specifications in this product catalogue are nominal.

Basic Paver and Slab Installation



What You Will Need

Building Materials

- Bedding Material
- Base Material
- Joint Sand or Polymeric Sand
- Geotextile
- Paver Edge Restraint

Guides

- Screeding tool: 8'–10' (2.44 m–3.05 m) long (use straight 2x4 or carpenters level)
- Two Levelling Guides: 10' (3.05 m) long, 1" (25.4 mm) outer diameter (pipe, electrical conduit, wood strips, etc.)
- Wooden Stakes or Metal Pegs
- String
- String level
- Carpenters Pencil

Tools

- Hand Tamper
- Carpenters Level
- Trowel
- Rake
- Shovel
- Wheelbarrow
- Broom
- Rubber Mallet
- Tape Measure
- Safety Glasses

Equipment (available to rent)

- Plate Compactor (min.-5000 lbf) or Roller Compactor
- Concrete Saw with a Diamond Blade
- Jumping Jack or Sheep’s Foot Compactor

Optional

- Gloves
- Knee Pads

Base & Bedding Recommendations

	Bedding Material	Base Material	Advantages	Installation Notes
Traditional Base	Course Sand <i>Alternate Names:</i> Concrete Sand (adhering to either ASTM C33 or CSA A23.1 FA1)	3/4" (19.05 mm) crusher run, well-graded gravel <i>Alternate Names:</i> 3/4 down “A” Base	This base system has many years of successful use, and materials are readily available and often most economical.	
Free Draining Base	1/8" (3.18 mm) to 1/4" (6.35 mm) crushed clear/clean stone. <i>Alternate Names:</i> 1/8", 1/4" chip or HPB (High Performance Bedding)	3/4" (19.05 mm) crushed clear/clean stone <i>Alternate Names:</i> ASTM No.57 Fifty-Sevens	This base system is more resistant to frost heave and is not as easily damaged during installation by rain or foot traffic.	Geotextile is required to prevent soil particles from entering the clean base material. Subsoil must be sloped to drain water away from any structures, and towards a suitable runoff location or below grade drainage system. Final paver laying must not vary by more than 1/8".

Design & Excavation

1. Mark out Your Design

a. Use your preferred method to mark out the outline of your design on the ground. String or spray paint are good options.

b. We recommend excavating at least 12" (304.8 mm) past your intended paver perimeter.

2. Set Elevations

a. Set stakes; mark the elevation and grade; set string lines to mark the top of finished patio. Slopes should be minimum of 1.5% or 1" for every 8'.

b. Grade stakes should be checked periodically to ensure they have not been disturbed.

3. Excavation (Table A)

IMPORTANT: Before any digging, contact your local utility companies for the location and depth of pipes, cables and conduits.

a. Calculate your Total Excavation Depth using the appropriate table for your jobsite based on the climate you live in.

Total Excavation Depth = Paver/slab thickness + 1" Bedding Sand + 4–8" Base Layer

b. Remove the dirt and sod below your string lines to match your Total Excavation Depth.

c. Compact the newly unearthed soil using the Jumping Jack or Sheep’s Foot Compactor. Compaction of the unearthed soil is critical to the performance of your paving project. Do this prior to installing geotextile and/or base layer.

Table A

Dry Climate

Project	Paver/Slab Thickness	Bedding Material Layer	Minimum Base Thickness Guide*
Patio/Sidewalk	x	1" (25.4 mm)	4" (101.6mm)
Driveway	x	1" (25.4 mm)	6" (152.4 mm)

Cold Climate/Wet Soil

Project	Paver/Slab Thickness	Bedding Material Layer	Minimum Base Thickness Guide*
Patio/Sidewalk	x	1" (25.4 mm)	6"(152.4 mm)
Driveway	x	1" (25.4 mm)	8"(203.3 mm)

These recommended minimum base thickness levels are only general guidelines and required base thicknesses will vary based on soil structure. Every job site is unique so requirements may vary. When in doubt, consult a professional.



Base Layer Compaction

4. Install Geotextile (optional)

a. Geotextile reduces the likelihood of premature settling and rutting. Use it in areas where soil remains saturated part of the year, where there is freeze and thaw, or over clay and moist, silty soils.

b. Ensure minimum downslope overlap of 12" (304.8 mm).

c. Cover the compacted soil including the vertical sides, with geotextile.

5. Spread and Compact Your Base Layer

IMPORTANT: Do not install frozen base material or spread base material over frozen soil.

IMPORTANT: As you compact, check the base material moisture to ensure it is neither too wet or too dry. Clump some aggregate in your hand. It should retain its shape when dropped from 1 foot. If your aggregate is too dry, spray lightly with water.

a. Spread a layer of base material across your surface. Reference the items on Table A to calculate your required base thickness.

For 7000 lbf reversible plate compactors: Spread and compact up to 4" (101.6 mm) at a time. The base material should extend 6" (152.4 mm) beyond your intended paver perimeter. Base should be compacted so that a 10" (254 mm) spike should take 3 hard strikes with a 2lb hammer to drive into the base.

For 5,000 lbf reversible plate compactors: Spread and compact up to 2" (50.8 mm) at a time. The base material should extend 6" (152.4 mm) beyond your intended paver perimeter. Base should be compacted so that a 10" (254 mm) spike should take 3 hard strikes with a 2lb hammer to drive into the base.

b. Continue adding layers and compacting until you are 2" (50.8 mm) + Paver height away from top of soil.

6. Screed and Compact Your Final Base Layer

a. Lay your levelling guides (1" pipe, electrical conduit or wood strips) onto your compacted base.

b. Set the proper height of your levelling guides. Ensure that the bottom of the screed bar ends up being 1" above the compacted base.

c. Fill the area with your final base layer. Slide the 2x4 board along the levelling guides to spread and level the final base layer within 3/8" (9.53 mm) of the final grade. Compact the final base layer, as usual.

7. Confirm Your Final Base Height (Diagram A)

a. Place a test paver or slab on your base layer. If the paver or slab is more than 1" below your final grade height, add more base material, screed and compact until the 1" (25.4 mm) threshold is reached.

Edge Restraints & Bedding Material

8. Install Edge Restraint

IMPORTANT: An edge restraint should be installed after the base layer is compacted and prior to bedding sand.

a. Install an edge restraint of your choice. We recommend Snap Edge. Carefully follow the manufacturer's instructions.

9. Bedding Material

IMPORTANT: Do not use crushed limestone or stone dust as bedding sand. Do not install frozen or water saturated sand.

a. Lay your levelling guides (1" pipe, electrical conduit or wood strips) onto your compacted base.

b. Set the proper height of your levelling guides. Ensure that the bottom of the screed bar ends up being 1" above the compacted base.

c. Fill the area between the leveling guides with bedding material. Bedding material will be spread and levelled to an uncompacted nominal 1" (25.4 mm) thickness.

d. Slide the 2x4 board along the levelling guides to spread and level the bedding material.

Installing Pavers & Slabs

10. Lay Down Pavers

IMPORTANT: Do not use your house or building as reference line.

a. Use string lines as a guide for maintaining straight joint lines.

b. Pull and mix pavers or slabs from different bundles for better colour blending.

c. Cut or split pavers or slabs using a concrete saw or paver splitter. Use proper dust collection or a respirator when running a saw.

d. When installing pavers or slabs, ensure that each block is in contact with previously placed block as you place it. Avoid placing a paver or slab on the bedding material and then pushing it into place.

Compacting Pavers & Slabs

11. Compact Your Pavers or Slabs

IMPORTANT: Always use a Paver Saver Mat when using a plate compactor to avoid damaging your pavers.

a. Plate Compactor (minimum 5000 lbf): Used for pavers only.

Roller Compactor: Used for pavers or slabs

b. After placing your pavers or slabs, select the appropriate compactor for your surface. Compact with two passes at right angles made across the surface to set the pavers or slabs in the bedding sand and force the sand into the joints.

Joint Sand or Polymeric Sand

Finish your paver or slab installation with either joint sand or polymeric sand.

12a. Option 1: Install Polymeric Sand

IMPORTANT: For joint sand installation refer to page 7.

a. Carefully follow the manufacturer's instructions. Each manufacturer has specific installation instructions regarding application, wetting and drying

b. Final surface height variation should not exceed 3/8" (9.53 mm) from final elevation.

c. Refer to masonryandhardscapes.org for detailed Barkman CMHA technical specifications.

12b. Option 2: Install Joint Sand

a. Sweep dry joint sand into the spaces between your finished pavers. Joint sand can be finer than bedding sand.

b. Compact the surface.

IMPORTANT: Always use a Paver Saver Mat when using a plate compactor to avoid damaging your pavers.

c. Plate Compactor (minimum 5000 lbf): Used for pavers only.

d. Roller Compactor: Used for pavers or slabs.

e. Ensure joints are full. Apply more sand if necessary and make take two or three more passes with compactor.

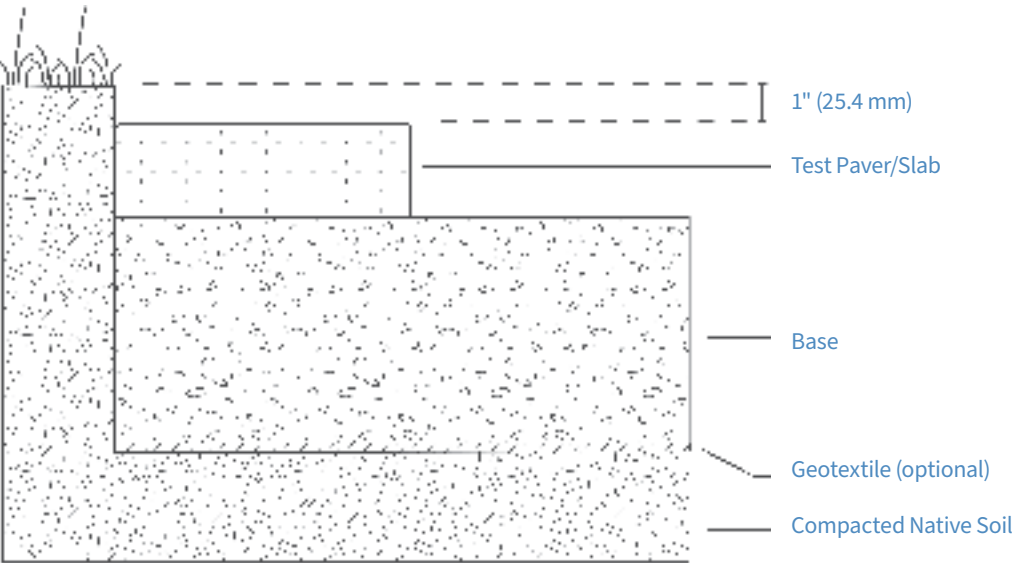


Diagram A

Basic Wall Installation

Equipment Needed

- Broom, chisel, concrete saw, guide string, gloves, rubber mallet, knee pads, pencil, rake, level, shovel, stakes, tape measure, safety glasses, trowel, wheelbarrow

Getting Started

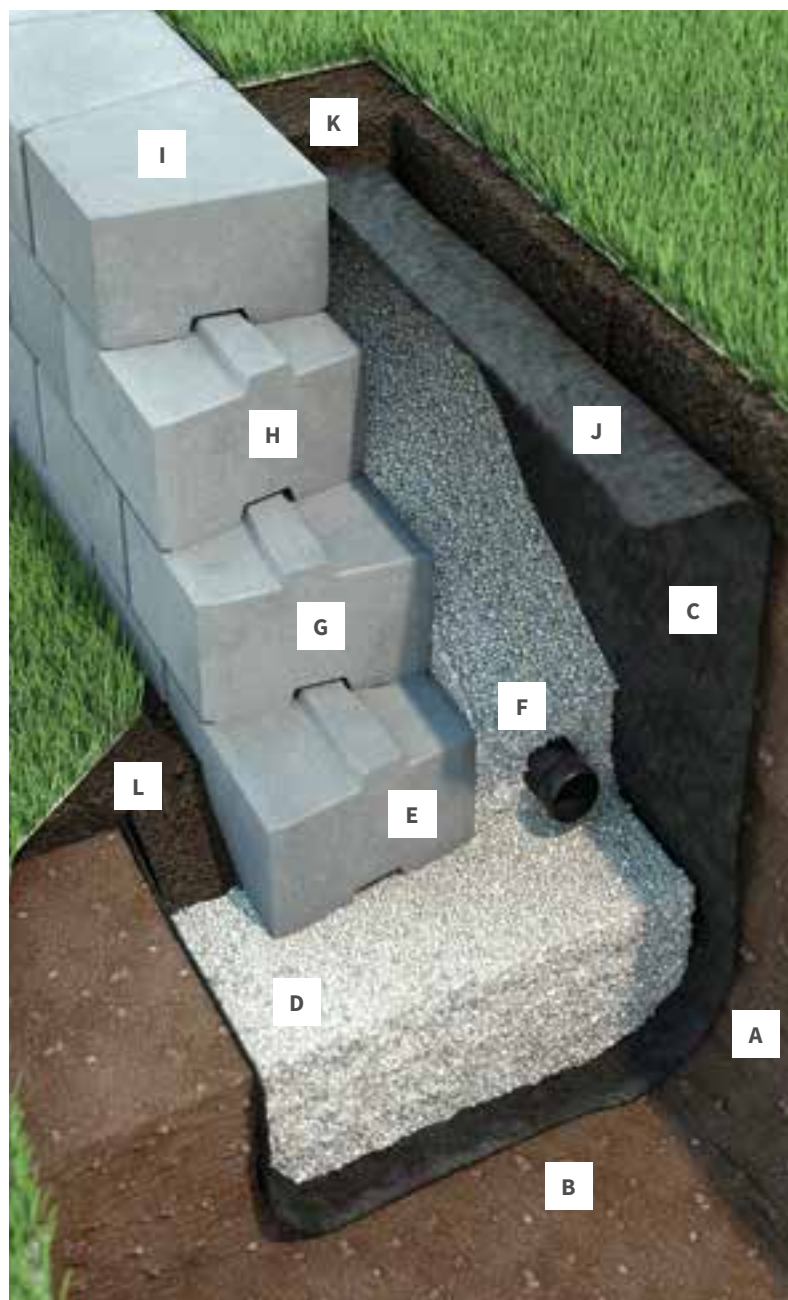
- Layout design on paper
- Estimate required amount of Barkman product, well-graded granular base, top soil, filter cloth and masonry adhesive needed (see BarkmanConcrete.com for product calculator)

Ground Preparation

- Excavate a trench (A) 8–12" (203–305 mm) deep and 16–24" (406–610 mm) wide along the entire length of the wall (larger walls require larger trenches – see specific product installation guides for exact details)
- Compact base soil to ensure stability (B)
- Lay filter cloth (C) under granular base and against the exposed face of the excavation
- Spread 4–6" (102–152 mm) layer of granular base (D), compact
- Position leveling string to mark location of the first course

Installing Units

- Lay first course (E) on prepared base (at least 2" (51 mm) below grade), keep each unit level front to back and side to side
- Place drain tile (F) on prepared base, behind the first course
- Sweep top of first course, place next offsetting course (G), back fill with granular rock on top of filter cloth Repeat offsetting courses (H) and back fill until desired height is reached
- Secure last course (I) with adhesive and apply pressure to secure



Finishing

- 6" (152 mm) from top of wall, pull filter cloth back towards the wall, on top of back fill (J)
- Fill remaining space with top soil (K) (cover the pulled back filter cloth) to make ground level with wall
- Fill remaining trench space in front of the wall with top soil (L) sloping away from the wall

Steinbach Office and Distribution Centre

152 Brandt Street
Steinbach, MB
R5G 0R2
T 204 326 3445
1 800 461 2278
F 204 326 5915
Steinbach@BarkmanConcrete.com

Winnipeg Office and Distribution Centre

901 Gateway Road
Winnipeg, MB
R2K 3L1
T 204 667 3310
1 800 342 2879
F 204 663 4854
Winnipeg@BarkmanConcrete.com

Calgary Office and Distribution Centre

813 McCool Street
Box 1136,
Crossfield, AB
T0M 0S0
T 403 946 4630
F 403 946 4631
Calgary@BarkmanConcrete.com

Vancouver Office

Port Moody, BC
T 1 800 461 2278
F 604 949 0321
Vancouver@BarkmanConcrete.com

Merritt Office and Distribution Centre

1132 Midday Valley Road
Merritt, BC
V1K 1M9
T 778 661 1408
Vancouver@BarkmanConcrete.com

Saskatoon Distribution Centre

3550 Idylwyld Drive North,
Saskatoon, SK
S7L 6G3
T 1 800 461 2278

Our Locations

barkman™

BarkmanConcrete.com



Made in Canada