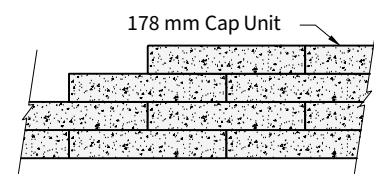


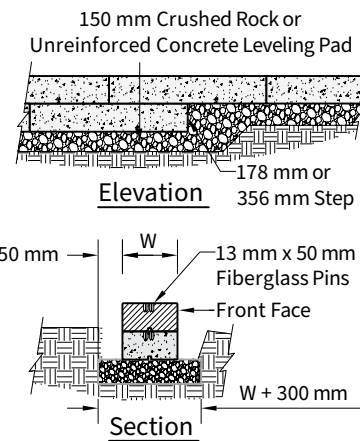
Linear Unit Dimensions



Top of Wall Steps

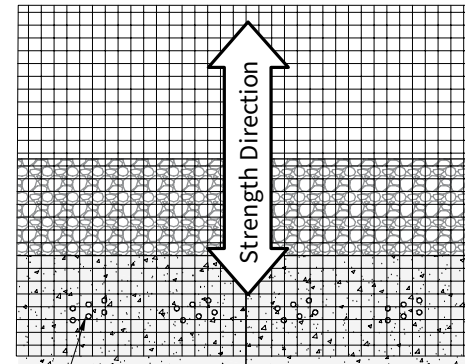
Stacking Requirements

- Face of Cap Unit Shall Not Extend Horizontally Beyond Face of Base Unit
- Staggered Units Shall Not Extend More than 25 mm Horizontally Beyond Face of Base Unit in Wall
- Number of Units Extending Horizontally in Front of the Base Shall be Less than or Equal to the Number of Units Extending Behind the Base Unit.



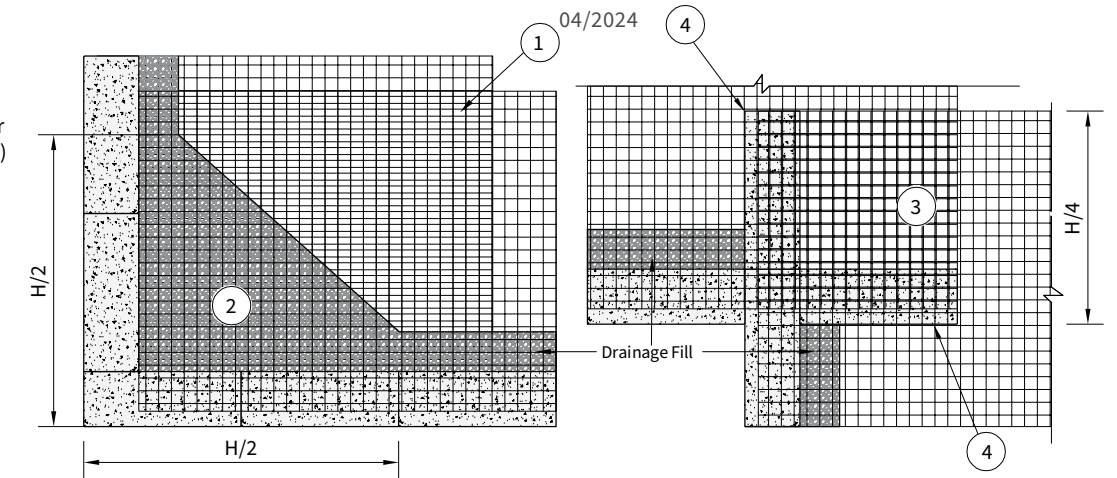
Leveling Pad Details

Note: The leveling pad is to be constructed of crushed stone or 20 MPa ± unreinforced concrete.



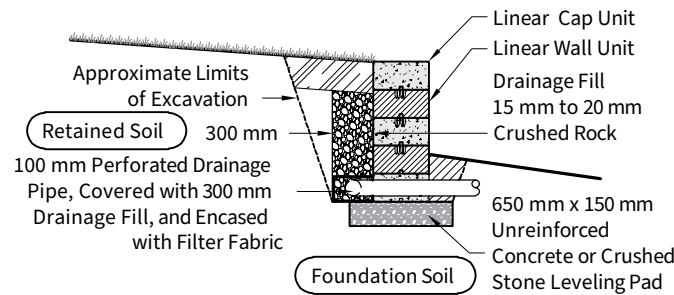
Geogrid & Pin Connection

- 75 mm of Soil Fill is Required Between Overlapping Geogrid for Proper Anchorage (Typ.)
- Additional Drainage Fill Extend Wall Height / 2 (Typ.)
- Additional Geogrid Overlap Extend Wall Height / 4 (Typ.)
- Extend Wall to Accomodate Wall Batter.



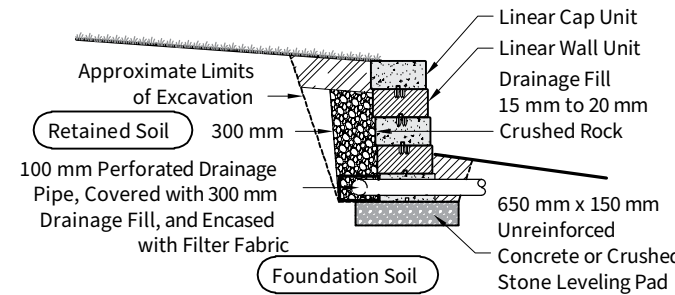
Geogrid Installation on Corners

Note: Check with Manufacturer Specifications on Correct Direction of Orientation for Geogrid to Obtain Proper Strength.



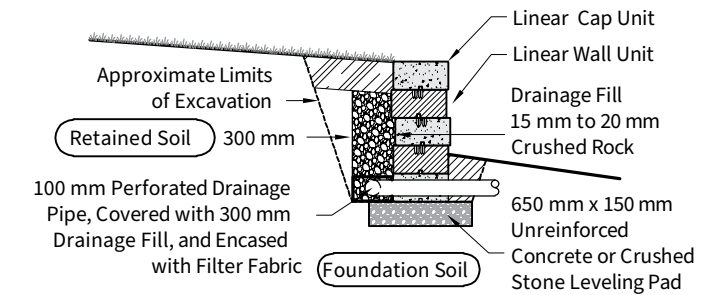
Typical Gravity Wall Section

Linear Unit - Vertical (See Stacking Requirements)



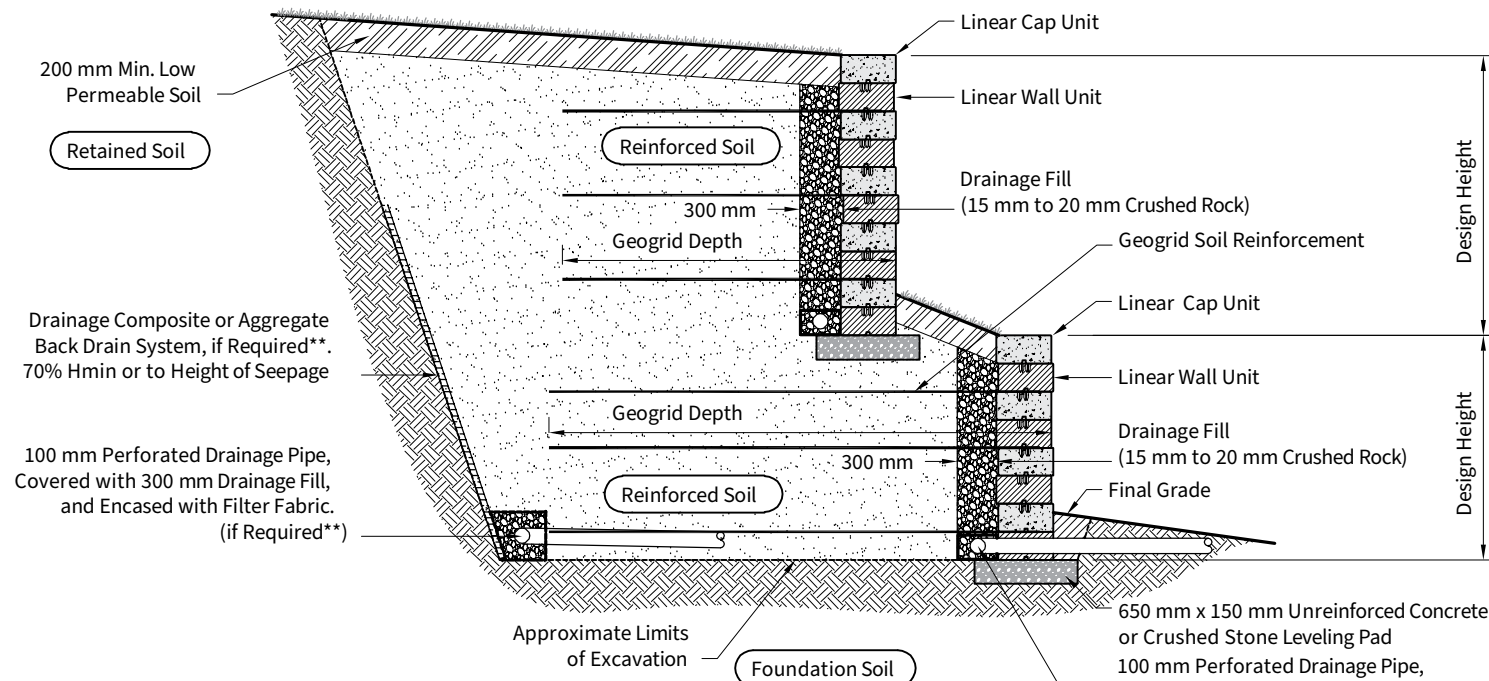
Typical Gravity Wall Section

Linear Unit - 25 mm Setback (See Stacking Requirements)



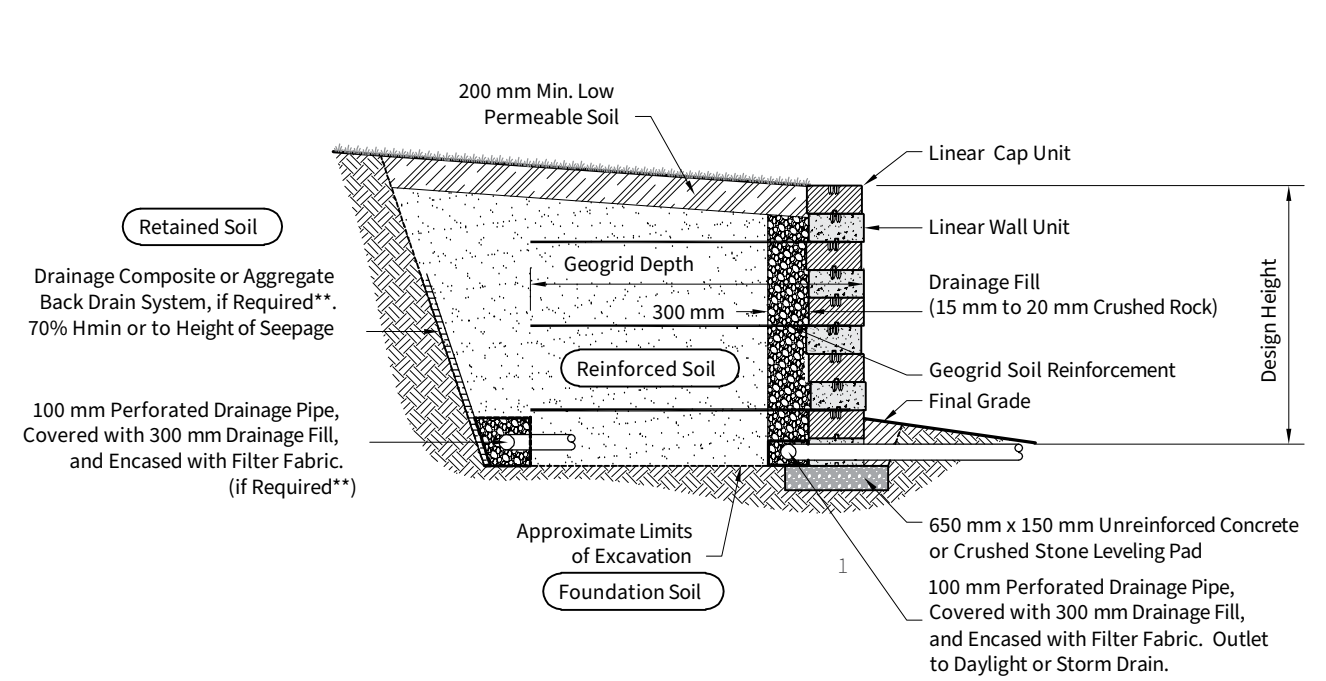
Gravity Wall Section with Staggered Units

Linear Unit - Setback Varies (See Stacking Requirements)



Typical Reinforced Tiered Wall Section

Linear Unit - Setback Varies (See Stacking Requirements)



Typical Reinforced Wall Section

Linear Unit - Setback Varies (See Stacking Requirements)