

barkman

Hog Gang Slat Handling and Installation

DELIVERY

- 1 The maximum number of slats to be picked up by a forklift is 4 if length is 8' or less. For longer than 8' lengths stack only 3 high. Forks are to be spread apart so that each fork is no more than 18" from the end. If this is not possible, no more than 2 slats at a time should be lifted.

Example: 10' slat: Forks are 18" in from each end. Forks are spread 7' apart. Make sure forks extend all the way through. Lift evenly so edges are not chipped.



- 2 Site conditions are usually soft and very uneven. Place 4" x 4" timbers on the ground and 4" x 4" spacers on top of the timber. Make sure the 4" x 4" spacers line up with spacers above. Make sure that slats are solidly blocked and do not wobble when set down. Do not stack more than 4 slats high.



- 3 (4 x 4) wood spacers between slats are to be placed one above the other and equally spaced from the end to the edge of the slat.



Steinbach Office
152 Brand Street
Steinbach, Manitoba
R5G 0R2 Canada

T 204-326-3445
TF 1 800 461 2278
F 204-326-5915
E Ag@BarkmanConcrete.com

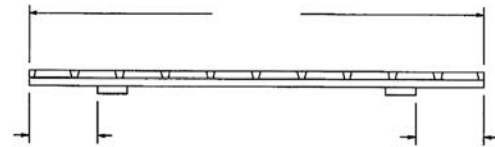
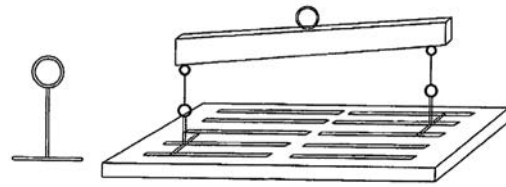
BarkmanConcrete.com



Filter-crete Slat Handling and Installation

INSTALLATION

- 1 Use 0.5" square solid rod as per drawing and set in slot 18" from end and turn 90°. Set lifting hooks diagonally across the slat. A yoke should be used so the lifting hooks pull straight up and not inward.
- 2 Spread forks so they are 18" from end of slats and make sure forks extend all the way through. Lift upwards evenly so edges are not chipped. Attention: Do not drive on slats. Actual slat length may be slightly more or less than stated. Allow an opening 1" longer than slat length.



NOTES

- A. Pit opening should be a minimum of 0.5" longer than slat length. **Example:** 8' slat opening 8' 0.5" minimum.
- B. If slats are added end to end, add 0.25" per slat. **Example:** 4 row 10' slats – opening should be 40' 1" minimum.



Steinbach Office
152 Brand Street
Steinbach, Manitoba
R5G 0R2 Canada

T 204-326-3445
TF 1 800 461 2278
F 204-326-5915
E Ag@BarkmanConcrete.com

BarkmanConcrete.com