

**barkman™**

# Terrace Slab



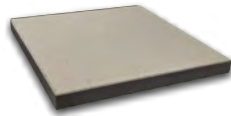
## Elevate Your Rooftop Balcony

Turn an undeveloped rooftop or a neglected patio into liveable space with Barkman's Terrace Slab. Each slab is manufactured using strict height tolerances and meets the flexural strength requirements stipulated by CSA A231.1.



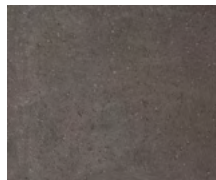
Install Terrace Slab normally or use a pedestal system for easy access to the rooftop substrate.

### SIZES (L X W X H)



610 x 610 x 51 mm  
24 x 24 x 2 in

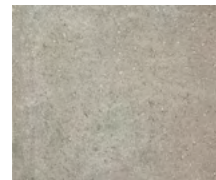
### COLOURS



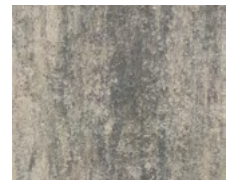
Charcoal



Graphite



Natural



Sterling

### BUNDLE CONFIGURATIONS

DESCRIPTION	UNIT					PALLET				
	SIZE (L X W X H)		FACE AREA		WEIGHT	NO. OF HORIZONTAL LAYERS	NO. OF UNITS	FACE AREA		WEIGHT
	MM	IN	M <sup>2</sup>	SQ FT	LB			M <sup>2</sup>	SQ FT	LB
24 x 24	610 x 610 x 51	24 x 24 x 2	0.37	4	96.13	10	20	7.44	80	1923

#### Steinbach Office

152 Brandt Street  
Steinbach, MB R5G 0R2  
T (800)-461-2278  
F (204)-326-5915

#### Winnipeg Office

901 Gateway Road  
Winnipeg, MB R2K 3L1  
T (800)-342-2879  
F (204)-663-4854

#### Calgary Office

813 McCool St. Box 1136  
Crossfield, AB T0M 0S0  
T (403)-946-4630  
F (403)-946-4631

#### Vancouver Office

Port Moody, BC  
T (778)-689-7670  
F (604)-949-0321

#### Merritt Office

1132 Midday Valley Rd  
Merritt, BC V1K 1M9  
T (778)-661-1408

